

BQ.TADANO

GT-350E-2

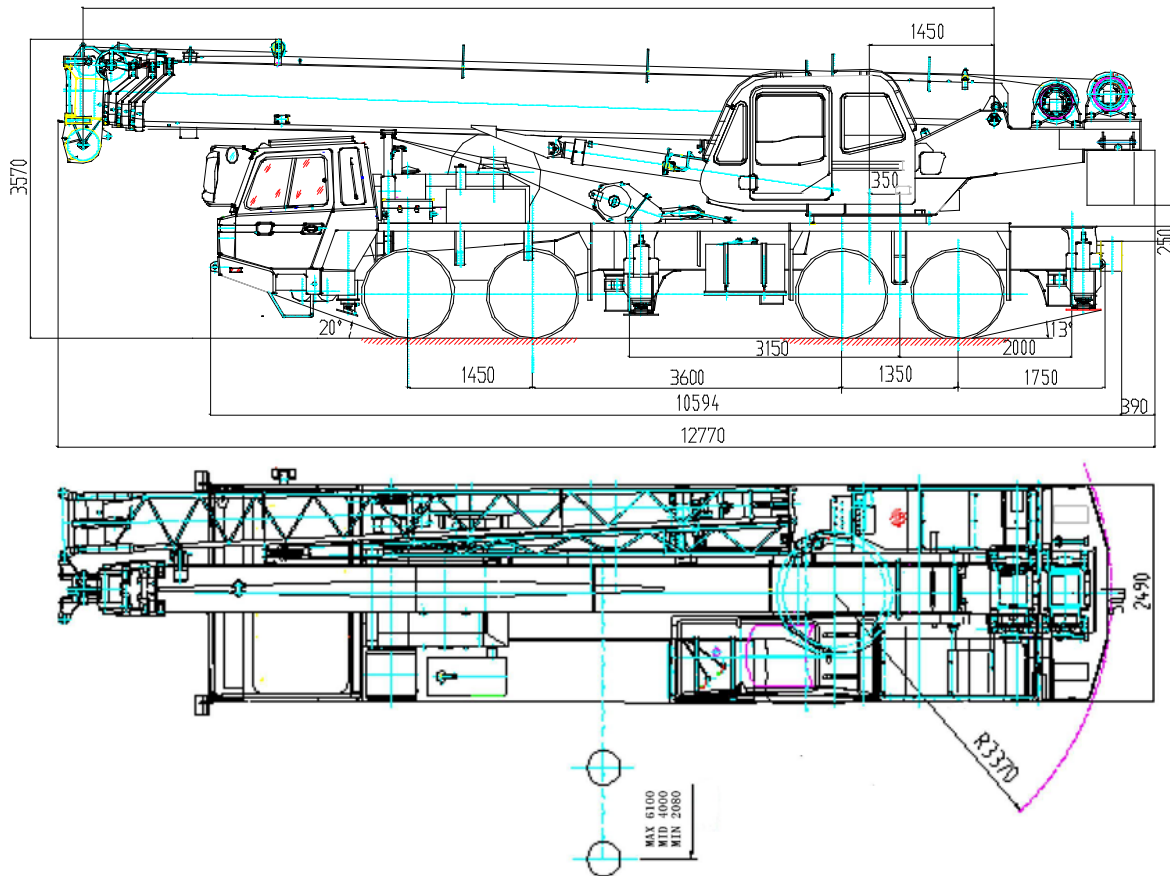
Crane Capacity:35,000kg at 3.0m

Euro-3

Hydraulic Truck Crane

Dimensions

10600~34000



DIMENSIONS

| | |
|-----------------|----------|
| Overall length: | 12,770mm |
| Overall width: | 2,490mm |
| Overall height: | 3,570mm |

WEIGHT

| | |
|------------------------|-----------|
| Gross Vehicle Weight : | 33,800 kg |
| Front axle weight : | 11,950 kg |
| Rear axle weight : | 21,850 kg |

PERFORMANCE

| | |
|------------------------|--------------------------------------|
| Max. traveling speed : | 74km/h |
| Gradeability(tanθ) : | 46% |
| Min. Turning radius : | 11m(at center of extreme outer tire) |

1.SUPERSTRUCTURESPECIFICATIONS**BOOM**

4-section full power partially synchronized telescoping boom of hexagonal box construction.

Fully retracted length -----10.6 m

Fully extended length ----- 34 m

Extension speed ----- 23.4 m in 127s

JIB

2-staged boom extension type. Triple offset (5°/25°/45°) type. Stored beside base boom section. Single sheave at jib head.

Length --- 8.8 m, 15.2m

SINGLE TOP

Mounted to main boom head for single line work.

ELEVATION

By a double-acting hydraulic cylinder, fitted with holding valve.

Elevation speed -----2°-80°in /62s

HOIST--Main winch

Variable speed type with grooved drum driven by hydraulic axial piston motor through winch speed reducer.

Single line pull -----31.2kN (3,190 kg)

Single .line speed ----118m/min (at the 4th layer)

Diameter-----16mm

Length-----.190m

HOIST-Auxiliary winch

Variable speed type with grooved drum driven by hydraulic axial piston motor through winch speed reducer.

Single line pull -----34.3 kN (3,500kg)

Single line speed -----102 m/min (at the 2nd layer)

Diameter. -----16 mm

Length-----110 m

SWING

Hydraulic axial piston motor driven through planetary speed reducer. Continuous 360 ° full circle swing on ball bearing slew ring. Automatic Speed reduction and soft stop function.

Swing speed -----2.5r /min

HYDRAULIC SYSTEM

Pumps----Quadruple gear pumps driven by carrier engine through P.T.O.

Control valves-----Multiple valves actuated by pilot pressure with integral pressure relief valves.

Circuit-----Equipped with air cooled type oil cooler. Oil pressure appears on AML display for main circuit.

Oil tank capacity-----approx. 527liters

Filters -----Return line filter

CAB AND CONTROLS

By 4 control levers for swing, boom hoist, main winch, boom telescoping or auxiliary winch with 2 control pedals for boom hoist, boom telescoping based on ISO standard layout. Control lever stands can change neutral positions and tilt for easy access to cab.

Steel construction with sliding door access and tinted safety glass windows opening at side, and operator's 5 way adjustable seat with headrest and armrest.

OUTRIGGER

4-hydraulically operated H-type outriggers. Each outrigger controlled simultaneously or independently from either side of carrier. Equipped with sight level gauge. Floats mounted integrally with the jacks retract to within vehicle width. All cylinders fitted with pilot check valves. Crane operation with different extended length of each other.

Equipped with extension width detector for each outrigger.

Extended width

Fully -----6,100 mm

Middle -----4,000mm

Minimum---2,080mm

Float size (Diameter) -----400 mm

TADANO Automatic Moment Limiter

Main unit in crane cab gives audible and visual warning of approach to overload. Automatically cuts out crane motions before overload. With working range (load radius and / or boom angle and / or tip height and / or swing range) limit function.

Nine functions are constantly displayed.

Either moment as percentage or main hydraulic pressure

Either boom angle or moment %

Either boom length or potential hook height

Either actual load radius or swing angle

Actual hook load

Permissible load

Either jib offset angle or number of parts of line of rope

Boom position indicator

Outrigger position indicator

FRONT JACK

Front outrigger mounted to the front frame of carrier to permit 360°lifting capabilities.

Hydraulic cylinder fitted with pilot check valve. Equipped with front jack extension detector.

Float size (Diameter) -----260 mm

COUNTERWEIGHT

Integral with swing frame

weight-----4,100 kg

2. CARRIER SPECIFICATIONS**MANUFACTURER**

JING CHENG HEAVY INDUSTRY

MODEL

Type: Euro-3

Model: BCW5361JQZ

ENGINE

| | |
|--------------|---|
| Emission | Euro-3 |
| Spec. No. | GT-350E-2-B0102 |
| Model | ISLE+325 |
| Type | 4 cycle, turbo charged, 6 cylinder in line, direct injection, water cooled diesel engine. |
| Displacement | 8.9 L |
| Max. output | 239/2100 kW/r/min |
| Max. torque | 1425/1200-1400N·m/r/min |

TRANSMISSION

Model: 9JS150T-B

9 forward and 1 reverse speeds

TIRES

Front: 11.00R20 single×4

Rear: 11.00R20 double×4

Spare:1100R20×1

Tire quantity: 13

SELECTION SYSTEM

24V

FUEL TANK CAPACITY

300 liters

EQUIPMENT**For Superstructure Standard Equipment**

3.5 ton hook

35 ton hook

3 working lights

External lamp (AML)

Cable follower

Sun visor

Sun shade

Cab floor mat

Air conditioner

For carrier Standard Equipment

Windshield wiper

AM /FM radio

Car heater

Speedometer

Sun visor

Spare tire

Floor mat

Tachometer

Low air pressure warning buzzer

Back-up alarm

Air filter warning light

Towing hook (Front and rear, Eye type)

Ashtray

Cigarette lighter

Safety belt

Cruise control

Inter-wheel differential

Inter-axial differential

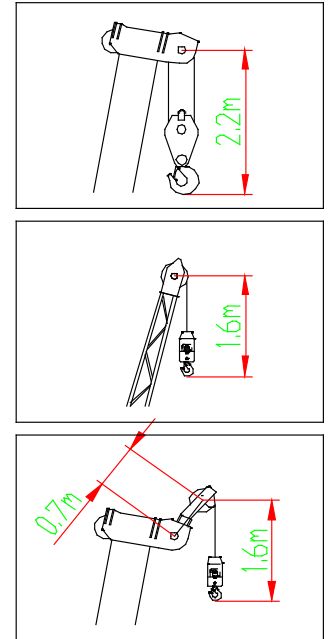
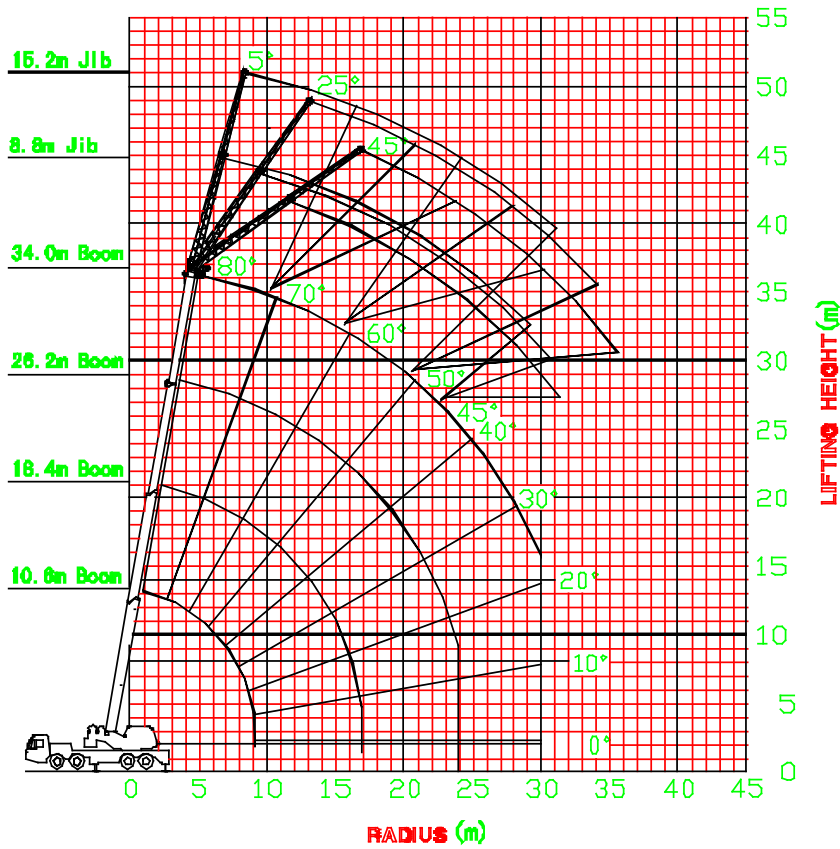
Fuel tank cap with lock key

Coolant level warning light

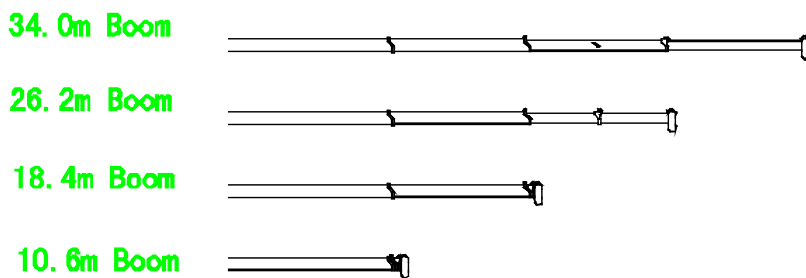
Air conditioner(hot water cab heater and cooler)

PTO hour meter

GT-350E-2 WORKING RANGE



Boom Length



NOTE:

The above lifting height and boom angle are based on a straight (unload) boom, and allowance should be made for boom deflection obtained under laden conditions.

Unit : kg

| Outriggers fully extended 6.1m | | | | |
|--------------------------------|------------|------------|------------|------------|
| Load radius (m) | 10.6m boom | 18.4m boom | 26.2m boom | 34.0m boom |
| 3.0 | 35,000 | 19,000 | | |
| 3.5 | 33,000 | 19,000 | | |
| 4.0 | 28,200 | 19,000 | 14,000 | |
| 4.5 | 25,000 | 19,000 | 14,000 | |
| 5.0 | 22,500 | 19,000 | 14,000 | |
| 5.5 | 20,000 | 19,000 | 14,000 | |
| 6.0 | 18,000 | 17,600 | 14,000 | 9,000 |
| 6.5 | 16,000 | 16,000 | 14,000 | 9,000 |
| 7.0 | 15,000 | 14,700 | 13,100 | 9,000 |
| 8.0 | 12,500 | 12,400 | 11,500 | 9,000 |
| 9.0 | 9,700 | 10,100 | 10,000 | 8,200 |
| 10.0 | | 8,300 | 8,800 | 7,500 |
| 12.0 | | 5,800 | 6,600 | 6,400 |
| 14.0 | | 4,000 | 4,800 | 5,200 |
| 16.0 | | 2,800 | 3,600 | 4,000 |
| 18.0 | | | 2,700 | 3,100 |
| 20.0 | | | 2,000 | 2,400 |
| 22.0 | | | 1,500 | 1,800 |
| 24.0 | | | 1,100 | 1,400 |
| 26.0 | | | | 1,000 |
| 28.0 | | | | 700 |
| 30.0 | | | | 500 |

Unit : kg

| Outriggers extended to middle 4.0m | | | | |
|------------------------------------|------------|------------|------------|------------|
| Load radius (m) | 10.6m boom | 18.4m boom | 26.2m boom | 34.0m boom |
| 3.0 | 30,000 | 19,000 | | |
| 3.5 | 30,000 | 19,000 | | |
| 4.0 | 26,400 | 19,000 | 14,000 | |
| 4.5 | 20,400 | 19,000 | 14,000 | |
| 5.0 | 16,400 | 16,000 | 14,000 | |
| 5.5 | 13,500 | 13,200 | 14,000 | |
| 6.0 | 11,400 | 11,000 | 12,100 | 9,000 |
| 6.5 | 9,700 | 9,400 | 10,400 | 9,000 |
| 7.0 | 8,400 | 8,100 | 9,000 | 9,000 |
| 8.0 | 6,400 | 6,100 | 7,000 | 7,400 |
| 9.0 | 5,000 | 4,700 | 5,500 | 6,000 |
| 10.0 | | 3,600 | 4,400 | 4,900 |
| 12.0 | | 2,000 | 2,900 | 3,300 |
| 14.0 | | 1,000 | 1,800 | 2,200 |
| 16.0 | | | 1,000 | 1,400 |
| 18.0 | | | 500 | 900 |
| 20.0 | | | | 500 |

Unit : kg

| Outriggers minimum extended 2.08m | | | | |
|-----------------------------------|------------|------------|------------|------------|
| Radius (m) | 10.6m boom | 18.4m boom | 26.2m boom | 34.0m boom |
| 3.0 | 15,400 | 15,000 | | |
| 3.5 | 11,600 | 11,300 | | |
| 4.0 | 9,100 | 8,800 | 9,200 | |
| 4.5 | 7,300 | 7,000 | 7,400 | |
| 5.0 | 6,000 | 5,700 | 6,200 | |
| 5.5 | 5,000 | 4,700 | 5,200 | |
| 6.0 | 4,000 | 3,800 | 4,300 | 4,700 |
| 6.5 | 3,300 | 3,100 | 3,600 | 4,000 |
| 7.0 | 2,700 | 2,500 | 3,000 | 3,400 |
| 8.0 | 1,800 | 1,600 | 2,100 | 2,500 |
| 9.0 | 1,200 | 900 | 1,500 | 1,800 |
| 10.0 | | | 1,000 | 1,300 |
| 12.0 | | | | 600 |

Unit : kg

| Outriggers fully extended 6.1m | | | | | | |
|--------------------------------|----------|-------|-------|-----------|-------|-----|
| Boom angle | 34.0m | | | | | |
| | 8.8m jib | | | 15.2m jib | | |
| | 5° | 25° | 45° | 5° | 25° | 45° |
| 80° | 3,500 | 2,500 | 1,400 | 2,300 | 1,150 | 750 |
| 75° | 3,500 | 2,330 | 1,380 | 2,100 | 1,040 | 670 |
| 72° | 3,500 | 2,250 | 1,350 | 1,950 | 1,000 | 630 |
| 70° | 3,300 | 2,100 | 1,320 | 1,750 | 950 | 610 |
| 65° | 2,700 | 2,000 | 1,250 | 1,440 | 880 | 560 |
| 60° | 1,870 | 1,690 | 1,150 | 1,220 | 830 | 520 |
| 55° | 1,230 | 1,130 | 1,080 | 820 | 700 | 490 |
| 50° | 770 | 710 | 710 | 450 | 380 | 350 |
| 45° | 400 | 400 | 400 | - | - | - |

Unit : kg

| Outriggers extended to middle 4.0m | | | | | | |
|------------------------------------|----------|-------|-------|-----------|-------|-----|
| Boom angle | 34.0m | | | | | |
| | 8.8m jib | | | 15.2m jib | | |
| | 5° | 25° | 45° | 5° | 25° | 45° |
| 80° | 3,500 | 2,500 | 1,400 | 2,300 | 1,150 | 750 |
| 75° | 3,450 | 2,330 | 1,380 | 2,100 | 1,040 | 670 |
| 72° | 2,250 | 2,000 | 1,350 | 1,750 | 1,000 | 630 |
| 70° | 1,700 | 1,550 | 1,320 | 1,300 | 900 | 610 |
| 65° | 750 | 700 | 650 | 500 | 350 | 300 |

TADANO LTD.(International Division)

4-12, Kamezawa 2-chome, Sumida-ku Tokyo 130-0014, Japan

Tel:81-3-3621-7750

Fax:81-3-3621-7785

<http://www.tadano.co.jp/indexe.htm>

E-mail:tdnihq@tadano.co.jp

BQ.TADANO (BEIJING) CRANE CO., LTD.

Add: No.36 Linhe Street, Linhe Industrial Development Zone, Shunyi District, Beijing

Tel: (86 10)89498713/18

Fax:(86 10)89498715/58

P.C.:101300

Website: www.bq-tadano.com

E-mail:sales@bq-tadano.com

sckfb@bq-tadano.com

NOTES: Due to constant development, the specifications above mentioned are subject to change without notice.