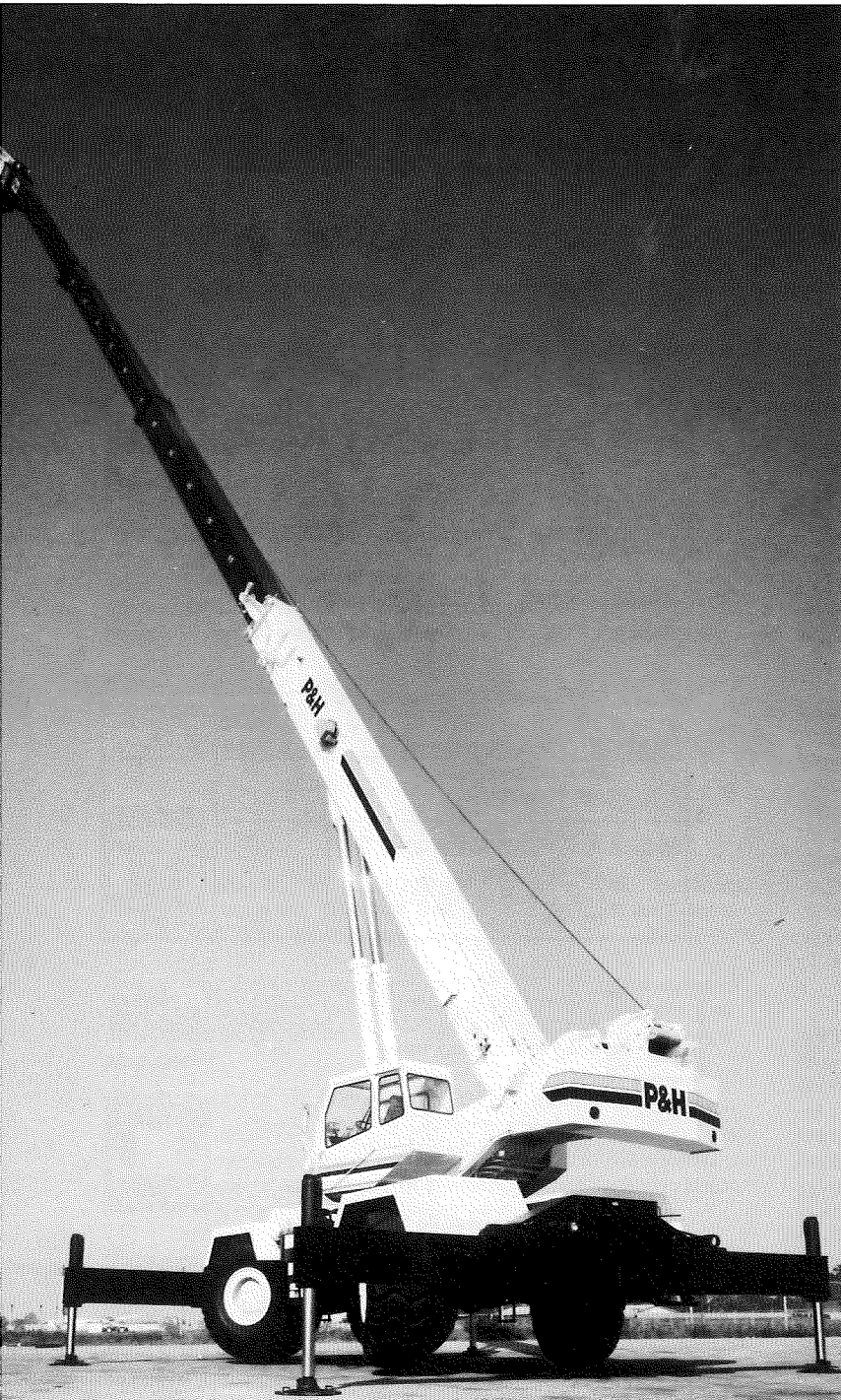


Rough Terrain Crane

65 Ton Capacity

186 Feet (56.7 m) Max. Boom and Extension



- **126 foot hydraulic telescopic boom**, 4-plate type, welded inside and out.
- **Lattice extensions** - 40 foot (12.2m) and 40-60 foot (12.2-18.3m) telescopic. Swingaround type - mounts on side of main boom for travel. Extensions can be offset 17° or 30° from main boom for up-and-over reaches.
- **Duty cycle** - no derates of capacities for bucket work on main boom or 40 foot extension.
- **Operators' cab** - cushion mounted, environmentally designed. Joy stick controllers for crane functions.
- **4 steering modes** - front wheel, rear wheel, crab or 4-wheel - all selected by electric switches - controlled by the steering wheel.
- **Power shift transmission** with torque converter. Gear selection electrically controlled and operated.
- **P&H winches** - planetary gearing, two equal speeds, power raising and lowering. Infinitely variable speed control. High line speeds and line pull.
- **Extra rugged** hydraulic, electrical and mechanical systems for long, hard duty.
- **"Easy Ride" Stabilizer** takes the bounce out of travelling for safer and easier movement around the jobsite.

Specifications

Specifications

ITEM NO. This P&H crane meets the requirements of ANSI B30.15 (1987). Boom structure (boom, lattice extension and jib) has been tested per SAE J1063, machine stability tested per SAE J765. LOAD RATINGS shown apply only to machine as manufactured and marketed by Century II, Inc.

BASIC MACHINE

Attachment



Boom: 40 ft. (12.2 m) retracted to 126 ft. (38.4 m) extended length, four section boom consisting of a boom base, two hydraulically extended and retracted sections and a fourth pinned section which can be hydraulically extended and retracted with pinning by hydraulic cylinders remotely controlled from the operator's cab. Boom point has five 17.81" (452mm) dia. main metallic sheaves with roller bearings and two idler sheaves with bronze bearings.

Each section of this rectangular boom consists of four plates welded both inside and out for superior strength. Large, non-metallic slider pads are adjustable.

For performance characteristics, see Chart no. 1, Crane Range Diagram, and Chart no. 2, Lifting Capacities on 126 ft. Boom.

See Optional Equipment for lattice extensions, auxiliary sheave, and hook blocks.

Counterweight:

12,900 lbs. (5851 kg) with 4 section boom.
1427 lbs. (647 kg) auxiliary counterweight to be used on units without auxiliary winch.

Upperstructure



Operator's Cab: Fully enclosed, all-weather steel cab with full vision safety glass and hinged top window with tinted glass. Cab is cushion-mounted for vibration isolation.

Operator's Cab Standard Equipment: Contains all roading and crane function controls. Front control console includes: engine water temperature gauge, engine oil pressure gauge, hydraulic oil temperature gauge, air pressure gauge, fuel gauge (2), volt meter, transmission temperature gauge, hour meter, winch high speed indicators; main winch drum turn indicator, dash light, electrical horn, windshield wiper, tachometer, machine level, brake warning indicator, check gauges indicator and rear steer centering light. Deluxe operator's seat with torsion suspension and fabric covering, fire extinguisher and seat belts. Front window fan, windshield wiper and washer, rear axle lockout override control.



Controls: Joy-stick controls are an integral part of the seat arm rests. Left hand side operates swing and auxiliary winch. Right hand side operates main winch and boom hoist. Front floor mounted foot pedals for swing brake, service brakes, boom telescope and engine throttle. Front console instrument panel contains ignition and engine "start" and "stop" switch, independent rear steering control switch, hand throttle control, swing lock control, electrical outrigger control panel, transmission control lever, transmission high-low range switch, park brake switch, steering mode selector switch and travel stabilizer switch.

Operational Aids

Krueger (ATB) anti-two block warning device with audio-visual warning. For main boom only.

Krueger (HAP) boom angle indicator with audio-visual warning.

Winches



Main Winch: P&H model 2080 with two speed, bent axial piston motor, mounted to rear of revolving frame. Planetary gearing and equal speed, power raising and lowering. Infinitely variable speed control. Spring applied, hydraulically released load holding multi-disc brake is automatic. Complete with 550' of .75" wire rope.

Drum: 16.614" (422mm) pitch diameter
22.81" (579mm) wide
27.75" (705mm) flange diameter

Wire Rope: .75" (19mm) dia. 6 x 36 extra improved plow steel with 7x7 IWRC. Strength limit: 16,800 lbs. (7,619 kg).

Drum Capacity: 778 ft.(237m) x .75" (19mm) dia., 5 layers.

Line Pull (max.): 22,410 lbs. (10165 kg) 1st layer, low speed.
16,845 lbs. (7640 kg) 5th layer.

Available Line Pull (for starting loads in mid-air) (max.):
15,000 lbs. (6802 kg) 5th layer

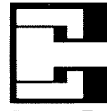
Line Speed (max.): (At engine no load high speed)
441 ft./min. (134 m/min.) 5th layer, high speed.

See Chart No. 3, Hoist Reeving, for rope capacities and parts of line required.

Auxiliary Winches: See Optional Equipment.

SHEAVE AND DRUM TO WIRE ROPE

RATIOS: (Pitch Diameters)	Sheave to Wire Rope	Drum to Wire Rope
Main Boom Sheaves .75" Wire Rope	23.7:1	-
Main & Aux. Winch Model 2080 .75" Wire Rope Aux. Winch Model 1580 .75" Wire rope	-	23.15:1 20.0:1



Boom Hoist: Two 8.25" (210mm) I.D. cylinders, double-acting. Hydraulically powered raising and lowering with holding valve.

Boom Telescope: Two 6.5" (165mm) I.D. cylinders, double-acting. Hydraulically powered raising and lowering with holding valve. Supplied by a single hose loop.

Hydraulic System

Pump Drive: Gear driven integral with transmission off rear of torque converter housing. Left hand pump drive with SAE "C" 2 and 4 bolt mounting flange and SAE "C" spline for swing and winch boost/steering/outriggers tandem gear pump. Right hand pump drive with SAE "B" 2 bolt mounting flange and SAE "B-B" spline for

winch and boom hoist/telescope tandem gear pump. The left hand SAE "C" mounting is equipped with a manual disconnect. Both pump drives have .98 pump speed to 1.0 engine speed drive ratio.

Pumps: One tandem gear pump operating at full load rpm, the cover end section provides 48 gpm (181 l/m) to the boom hoist and telescope circuits, and the shaft end section provides 39 gpm (147 l/m) to the main and auxiliary winch circuits.

One tandem gear pump operating at full load rpm, the cover end section provides 31 gpm (117 l/m) to the swing circuit, and the shaft end section provides 24 gpm (90 l/m) to the outrigger and steer circuits or the winch boost.

Oil Reservoir: 177 gallons (670 liters) mounted between the tires on the left side of the carrier frame.

Oil Cooler: Oil to air, tube and fin type with internal turbulators.

Control Valves: One single-spool valve for swing circuit.

One two spool valve with one spool for boom hoist and one spool for telescope circuits.

One two spool valve with one spool for the main winch and one spool for the auxiliary winch circuits.

Filters: Two return line filters, 7 micron nominal, externally mounted to the hydraulic reservoir.

Swing System



Swing Unit: Hydraulic motor driving through gear reducer to pinion gear. Drive pinion supported with outboard bearing housing. 360° continuous rotation to 2.1 rpm full load.

Swing Gear: Single shear ball swing bearing with internal spur gear.

Swing Brake: Spring applied, hydraulically released, wet disc brake, integral with swing reducer. Hand brake control lever mounted on side console in cab. A manual foot pedal applies brake for static holding.

House Lock: 360° gear segment type lock manually engaged with house lock lever in cab.

Carrier



Type: P&H 4 x 4 x 4, 11 ft. (3.37 m) wide.

Weight: Including ball bearing swing circle, hydraulic outriggers, standard tires (29.5 x 25 E-3) and diesel engine: 46,010 lbs. (20,870 kg).

Frame: Rectangular frame members of 100,000 psi (70 kg/mm²) and 80,000 psi (56 kg/mm²) yield strength alloy steel, reinforced with box constructed cross members of 80,000 psi (56 kg/mm²) yield strength alloy steel.



Outriggers: Hydraulic out and down type. Eight double-acting hydraulic cylinders for independent horizontal and vertical motion of each beam operated from the operator's cab or at each side of the carrier. Each vertical cylinder is equipped with a holding valve.

Outrigger beams: 80,000 psi (56 kg/mm²) yield strength alloy steel box extending to a maximum spread of 23' 7" (7.2 m) from centerline of float to centerline of float with the machine fully raised on the outriggers. Retracted width of the outriggers without floats is 10' 6" (3.2 m).

Outrigger Floats: Individually removable floats with storage on carrier. Float size 24" (610mm) dia. with effective nominal surface area of 452 sq. in. (2920 cm²) per float.

Lower Standard Equipment: Fenders with side storage compartments, sliding engine hood, tool box, tow lugs front and rear, hydraulic pump disconnect, automatic moisture ejector for air system, rear axle disconnect, oil to water transmission cooler and oil to air hydraulic oil cooler, audio back-up warning device, highway lights, rear view mirrors, air drier, oscillating axle lockout override and fire extinguisher.

Front Axle: Planetary drive and steer. 26.13:1 total reduction.

Rear Axle: Planetary Drive and steer. 26.13:1 total reduction. See optional equipment for no spin differential.

Brakes, Service: Air over hydraulic brakes on all four wheels. Drum type. Dual systems.

Brakes, Parking: Maxi spring set air chamber on 13.38" dia. x 2.0" wide (340mm x 51 mm) drum and shoe on input yoke of rear axle. Spring applied and air released for safety.

Suspension: Rigid mounted front axle. Rear axle is pivot mounted with automatic hydraulic lockout cylinders. Maximum oscillation: 10.4" (265 mm).



Steering: Hydrostatic type pressure compensated system fully controlled by a steering wheel with two hydraulic power assist cylinders on each axle.

Steering Modes: Operator's choice of front steer only, independent rear steer only, crab steer and four wheel steer. Activation of different steering modes is by electrical switch on the side control console; except independent rear steer, which is controlled by a toggle switch on the front console.

Tires: 29.5 x 25 - 28 PR tubeless rock tread (E-3)

For crane ratings on tires see chart nos. 11, 12 and 13.



Power Plant:

Make:	Detroit Diesel Allison 6V53T
Max. HP:	250 HP (186 kw) @ 2500 rpm
Max Torque:	593 ft. lb. (74 kg - m) @ 1600 rpm
Cylinders:	Six: 3.875" (98 mm) bore x 4.50" (114mm) stroke.
Displacement:	318 cu. in. ((5.21 liter)
Cycle:	Two
Alternator:	Delco 24 volt, NEG GRN 65 Amp.
Electrical:	24 volt run, 24 volt starting
Aspiration:	Turbocharged
Air compressor:	12 CFM @ 1250 rpm (340 liters/min.)

Radiator: Water to air, tube and fin type core with bottom tank transmission oil cooler. Thermostatically temperature controlled.

Air Cleaner: Donaldson FHG 16-0049 two stage primary dry air cleaner with "Duralife" filter media restriction indicator.

Muffler: "Silent Partner" muffler.

Fuel Tank: One steel tank, 80 gallons (300 liters) mounted on right side of carrier between the tires.



Transmission:

TYPE: Power shift with hi-low range with torque convertor.
 GEARS: 8 speeds forward, 6 reverse.
 GEAR SELECTION: Electrically controlled and operated.
 RANGE SELECTION: Electrically controlled and hydraulically operated.

REAR AXLE DISCONNECT: 2 wheel drive, 4 wheel drive, electrically controlled and pneumatically operated.

Electrical: 24 volt system with negative ground. Two 8D batteries with a reserve capacity of 442 min. and CCA at 0° of 970 amps. Harnesses have environmentally sealed Deutsch connectors. Switches used in operator's cab are environmentally sealed, rocker type.



Performance: Theoretical, based on 96,054 lbs. (43,660 kg) GVW; 29.5x25 E3 tires; 12,900 lbs. (5,863 kg) counterweight; 40' to 126' telescoping boom. Speed and gradeability will vary due to engine performance, vehicle weight and optional tires. Gradeability based on SAE J688.

Max. Speed: High Gear - 24.4 mph (39 km/h)
 Low Gear - 1.9 mph (3.0 km/h)
 Max. Grade: @ 1 mph - 63%.

END BASIC MACHINE

Options and Accessories

- ITEM NO. 122 **3-Section Boom:** 40 ft. (12.2 m) retracted to 96 ft. (29.4 m) extended length, three section boom consisting of a boom base, two hydraulically extended and retracted sections. Boom point sheaves are five main 17.81" (452 mm) P.D. sheaves with roller bearings and idler sheaves with bronze bearings.
- For performance characteristics, see Charts Nos.7 and 8.*
- ITEM NO. 125 **Lattice Extension:** 40 ft. (Item 145 included w/ new machine). Swingaway lattice structure with a detachable point section for easy conversion to telescopic type extension with a single metallic sheave. It can be put into operating condition by pivoting from its stored position on right side of boom base section. Self storing pins connect extension to boom head. In the operating position the extension is offset 2° from the main boom. Includes anti-two block material.
- ITEM NO. 135 **Telescopic Lattice Extension:** 40 ft. to 60 ft. (Item 150 included w/ new machine). Swingaway lattice structure boom extension with a welded four plate telescope section with a single metallic sheave. It can be put into operating condition by pivoting from its stored position on the right side of the boom base section and pinned to the boom head. Telescopic section is then extended on rollers and pinned. The telescopic section can be replaced with a stub head section when extra length is not required. In the operating position the extension is offset 2° from the main boom. Includes anti-two block material.
- For performance characteristics see Chart nos. 1 and 7: Crane Range Diagrams, and Chart nos. 4, 5, 6, 9 & 10: Load Ratings for Lattice Extension.*
- ITEM NO. 140 **Offset Mechanism:** Pivoting links which allow items 125 and 135 to offset 17° or 30° from the main boom.
- ITEM NO. 145 Material for storing Item 125, 40' extension, on the right side of boom. (For future installation of extension).
- ITEM NO. 150 Material for storing Item 135, 40' to 60' extension, on right side of boom. (For future installation of extension).
- ITEM NO. 160 **Auxiliary Boom Point Sheave:** Boom point mounted with single metallic sheave, includes anti-two block material.
- ITEM NO. 201 **Auxiliary Winch:** P&H model 2080, same as main winch, mounted to rear of revolving frame on the counterweight.
- ITEM NO. 205 **Auxiliary Winch:** P&H model 1580 with two speed motor, mounted to rear of revolving frame on the counterweight. Planetary gearing and equal speed, power raising and lowering. Infinitely variable speed control. Spring applied, hydraulically released load-holding multi-disc brake is automatic.
- Drum: 14.25" (362 mm) diameter
 18.5" (470 mm) wide
 22.52" (572 mm) dia. flange.
- Wire Rope: .75" (19 mm) dia., x 525', 8x19 extra improved plow steel, spin resistant with 7x7 I.W.R.C.
- Line Pull (max.): 18,282 lbs. (8291 kg) 1st layer low speed, 13,223 lbs. (5997 kg) 5th layer.
- Maximum Available Line Pull for Starting Load in Mid Air: 11,000 lbs. (4991 kg), 5th layer.
- Line Speed: 621 fpm (189 m/m), 5th layer, high speed (At engine no load high speed)

- ITEM NO. 220 **Wire Rope for Auxiliary Winch:** .75" x 525', 8 x 19 spin resistant
- ITEM NO. 230 **Drum Turn Indicator:** For auxiliary winch, electrical.
- ITEM NO. 235 **Hook Block:** 65 ton, 5 sheaves
- ITEM NO. 240 **Hook Block:** 20 ton, 1 sheave
- ITEM NO. 245 **Weighted Jib Hook:** 8.5 ton, with swivel
- ITEM NO. 260 **Cable Spooling Device:** Main or auxiliary winch drum
- ITEM NO. 330 **Non Spin Axle**
- ITEM NO. 410 **Window Wiper:** Roof
- ITEM NO. 415 **Heater & Defroster:** Diesel
- ITEM NO. 420 **Heater & Defroster:** Propane w/out tank.
- ITEM NO. 435 **Vandalism Kit:** Lexan Glass
- ITEM NO. 440 **Tinted Glass**
- ITEM NO. 455 **Rotating Beacon:** Amber, on roof of cab
- ITEM NO. 460 **Floodlight:** (1), includes standard alternator
- ITEM NO. 505 **Tires:** 26.5 x 25 - 26 PR Tubeless Rock Tread (E-3)
- For performance characteristics, see chart no. 13*
- ITEM NO. 550 **Spare Wheel & Tire:** 29.5 x 25-28 PR tire
- ITEM NO. 560 **Spare Wheel & Tire:** 26.5 x 25 - 26 PR tire
- ITEM NO. 625 **Pintle Hook:** front or rear
- ITEM NO. 635 **Cold Weather Starting Aid**
- ITEM NO. 645 **Tire Inflation Kit**
- Operational Aids**
- ITEM NO. 720 **P.A.T. load moment operational aid DS350** microprocessor system - includes load moment device w/ audio-visual warning, rated load, actual load, tare, radius, angle, length and height of boom tip indicators. Includes control lever lockouts.
- ITEM NO. 735 **Krueger (HLAP)** boom angle, length, radius indicators with angle preset and audio-visual warning.
- ITEM NO. 740 **P&H Control Lever Lockouts** (magnetic valve shut-off devices), for use with anti-two block and boom angle warning devices.
- ITEM NO. 745 **Krueger load moment system (Mark IIIe).** Includes load moment device w/ audio-visual warning, radius, angle, length w/ angle preset. Includes Control Lever Lockouts.

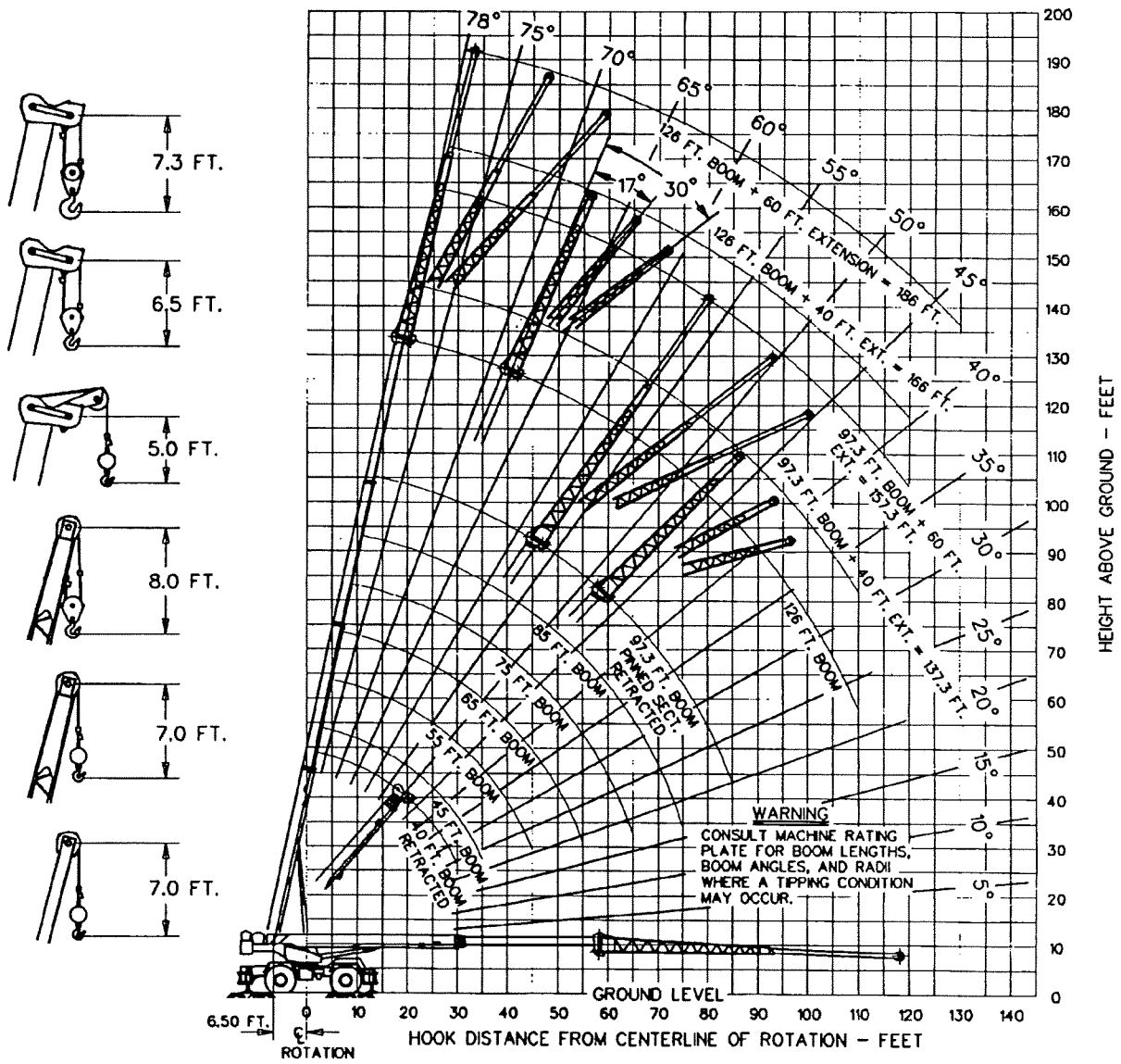
END OPTIONAL EQUIPMENT

Weight Distribution

	Pounds			Kilograms		
	Gross	Front	Rear	Gross	Front	Rear
Basic Carrier	30,360	15,091	15,269	13,771	6,845	6,926
Basic Upper	6,832	1,495	5,337	3,099	678	2,421
Standard Equipment						
126 ft. 4 section Boom	21,473	28,389	-6,916	9,740	12,877	-3,137
Easy Ride Boom Hoist Cylinder	3,386	3,170	216	1,536	1,438	98
12,900 lbs. counterweight	12,900	-7,000	19,900	5,851	-3,175	9,026
Main Winch Model 2080	1,799	-664	2,463	816	-301	1,117
Main Winch Wire Rope .75"x550'	584	-94	678	265	-43	308
Slab Cwt, or Auxiliary Winch	1,427	-798	2,225	647	-362	1,009
Detroit Diesel 6V53T w/ P-Shift Trans.	3,629	2,975	654	1,646	1,349	297
29.5x25 E-3 Tires	7,363	3,682	3,682	3,340	1,670	1,670
Standard Rear Axle	4,718	-7	4,725	2,140	-3	2,143
360° Positive House Lock	53	30	23	24	14	10
65 ton - 5 sheave hook block hooked on front outrigger for travel.	1,122	1,875	-753	509	851	-342
Steel Boom Point Sheave & Point Pin	408	1,221	-813	185	554	-369
Basic Machine	96,054	49,365	46,690	43,569	22,392	21,177
Adjustments for Options:						
Attachment Options:						
Auxiliary Boom Point Sheave	154	481	-326	70	218	-148
40 to 60 ft. Lattice Extension	2,805	3,791	-986	1,272	1,720	-448
20 ton 1 Sheave Hook Block	580	1,736	-1,156	263	787	-524
15 ton Ball Hook on Auxiliary Sheave	467	1,425	-958	161	596	-435
8.5 ton Ball Hook on Auxiliary Sheave	265	809	-544	120	367	-247
Offset Boom Extension Material	148	437	-289	67	198	-131
Boom Hoist Cyl. w/o Easy Ride	-254	-94	-160	-115	-43	-72
40 foot Lattice Extension	1,752	2,716	-964	795	1,232	-437
65 ton Hook Block on Boom Point	0	1,484	-1,484	0	673	-673
Independent Main and Auxiliary Winch	49	3	46	22	1	21
Wire Rope for 2080 Auxiliary Winch .75" x 525'	558	-313	871	253	-142	395
Cab Options:						
Heater - Diesel	55	3	52	25	1	24
Heater - Propane	53	3	50	24	1	23
Propane Tank - Full	49	1	48	22	0	22
Floodlights	29	32	-3	13	14	-1
Miscellaneous Options:						
Pintle Hook - Front	11	15	-4	5	7	-2
Pintle Hook - Rear	11	-7	18	5	-3	8

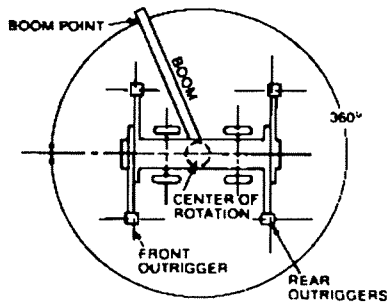
Crane Range Diagram - 126 Foot Boom

CHART
1

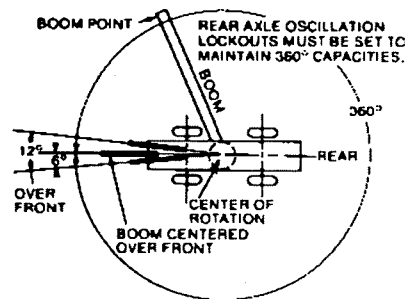


Areas of Operation

ON OUTRIGGERS



ON TIRES



Load Ratings - 126 foot Boom

CHART 2

RATED LOADS IN POUNDS ON OUTRIGGERS

POWERED BOOM LENGTH IN FEET - MANUAL RETRACTED

OPERATING RADIUS IN FT.	40 FT. 360°		45 FT. 360°		55 FT. 360°		65 FT. 360°		75 FT. 360°		85 FT. 360°		97.3 FT. 360°		OPERATING RADIUS IN FT.
	△	△	△	△	△	△	△	△	△	△	△	△	△		
10	68	130000	70	102000	74	94800								10	
12	65	115000	68	98400	72	88000	75	80400						12	
15	60	90000	63	90000	69	84000	73	72800	75	60500				15	
20	51	68500	56	68500	63	68500	68	63500	71	53000	74	44500	76	33000	20
25	40	53000	48	53000	57	53000	63	53000	67	45000	71	39000	73	32500	25
30	26	42000	38	42000	50	42000	58	42000	63	40000	67	34200	70	29000	30
35			25	35000	43	35000	52	35000	59	35000	63	30200	67	25500	35
40					34	27800	46	27800	54	27800	59	27000	64	22700	40
45					22	21700	39	21700	49	21700	55	21700	61	20500	45
50							31	17400	43	17400	50	17400	57	17400	50
55							21	14300	37	14300	46	14300	53	14300	55
60								29	11600	40	11600	49	11600	60	60
65								19	9600	35	9600	45	9600	65	65
70									28	7900	40	7900	40	7900	70
75									18	6500	35	6500	35	6500	75
80											29	5300	29	5300	80
85											22	4300	22	4300	85

Information

- Crane load ratings do not exceed 85% of tipping.
- Ratings above the heavy line are based on the machine's hydraulic or structural competence and not on machine stability.
- Deductions must be made from rated loads for stowed lattice extension, optional attachments, hooks and hook blocks (see deductions chart). Weights of slings and all other load handling devices shall be considered part of the load.
- Crane load ratings with outriggers are based on outriggers fully extended and set to a distance of 11 ft. 9-3/4 in. from the longitudinal axis of the carrier to the outrigger float pivot connection with all load removed from the carrier wheels.
- Counterweight 12,900 lbs. none removable.

CHART 3

MAIN HOIST REEVING

3/4" DIA. WIRE ROPE BREAKING STRENGTH 58,800 LBS. 6X36 FW I.W.R.C. 3.5:1 SF

Part of line	1	2	3	4	5	6	7	8	9	10
Maximum Load	15000	30000	45000	60000	75000	90000	105000	120000	130000	-

AUXILIARY HOIST REEVING

3/4" DIA. WIRE ROPE BREAKING STRENGTH 51,800 LBS. 8X19 I.W.R.C. 5.0:1 SF

Part of line	1	2	3	4	5	6	7	8	9	10
Maximum Load	10000	20000	30000	40000	50000	60000	70000	80000	90000	100000

CHART 4

LOAD RATINGS IN POUNDS WITH OUTRIGGERS EXTENDED

PINNED SECTION EXTENDED			LATTICE EXTENSION WITH PINNED SECTION RETRACTED						LATTICE EXTENSION WITH PINNED SECTION EXTENDED					
FOR ALL BOOM LENGTHS 66.7 TO 126 FT.			40 FT. FOR ALL BOOM LENGTHS 70 TO 136.3 FT.		40 FOOT TELESCOPIC FOR ALL BOOM LENGTHS 80 TO 137.3 FT.		60 FT. FOR ALL BOOM LENGTHS 100 TO 157.3 FT.		40 FT. FOR ALL BOOM LENGTHS 107.7 TO 165 FT.		40 FOOT TELESCOPIC FOR ALL BOOM LENGTHS 106.7 TO 166 FT.		60 FT. FOR ALL BOOM LENGTHS 126.7 TO 186 FT.	
OPERATING RADIUS IN FT.	△	RATED LOAD IN POUNDS	OPERATING RADIUS IN FT.	△	RATED LOAD IN POUNDS	OPERATING RADIUS IN FT.	△	RATED LOAD IN POUNDS	OPERATING RADIUS IN FT.	△	RATED LOAD IN POUNDS	OPERATING RADIUS IN FT.	△	RATED LOAD IN POUNDS
30	76	20700	30	77	16000	30	77	15600	30			30		
35	74	19000	35	75	14800	35	75	14200	35	77	10000	35		
40	71	17500	40	72	13700	40	73	13000	40	75	93000	40	77	11200
45	69	16500	45	70	12800	45	71	12100	45	73	86000	45	75	10500
50	67	15000	50	68	12000	50	68	11100	50	72	8000	50	74	9800
55	64	14000	55	66	11000	55	66	10300	55	70	7500	55	72	9200
60	61	12800	60	64	10500	60	64	9700	60	68	7000	60	70	8600
65	59	11600	65	61	9900	65	61	9100	65	66	6600	65	68	8100
70	56	9900	70	59	9400	70	59	8800	70	64	6200	70	66	7700
75	53	8500	75	56	8900	75	57	8100	75	62	5900	75	64	7200
80	49	7300	80	53	7600	80	54	6900	80	60	5600	80	62	6800
85	46	6300	85	51	6600	85	51	5900	85	57	5300	85	60	6500
90	43	5300	90	48	5600	90	48	4900	90	55	5000	90	58	6100
100	35	3800	100	41	4100	100	42	3400	100	51	4500	100	54	4800
110	25	2600	110	34	2800	110	34	2100	110	45	3200	110	49	3500
									120	39	2200	120	43	2500
												120	44	1800
												130	47	1900

NOTE:

- When boom is not fully extended, use only boom angles, not operating radius to determine load rating.
- For boom angles not shown, use rating of next lower boom angle.
- For bucket rating on 60 ft. extensions, deduct 20% from load ratings.

WARNING:

- A tipping condition will occur (with or without hook block) with 40 or 60 ft. boom extension due to the following conditions:
- Do not exceed 120 feet operating radius with pinned main boom section retracted.
 - Do not exceed 140 feet operating radius with pinned main boom section extended.

Load Ratings for Offset Extension with 126 foot Boom

CHART 5

17° OFFSET EXTENSION IN POUNDS WITH OUTRIGGERS EXTENDED AND SET

LATTICE EXTENSION WITH PINNED SECTION RETRACTED						LATTICE EXTENSION WITH PINNED SECTION EXTENDED											
OPERATING HEIGHT	40 FT.		OPERATING HEIGHT	40 FT. TELESCOPIC		OPERATING HEIGHT	60 FT.		OPERATING HEIGHT	40 FT.		OPERATING HEIGHT	40 FT. TELESCOPIC		OPERATING HEIGHT	60 FT.	
	FOR ALL BOOM LENGTHS 79 TO 136.3 FT.	RATED LOAD IN POUNDS		FOR ALL BOOM LENGTHS 80 TO 137.3 FT.	RATED LOAD IN POUNDS		FOR ALL BOOM LENGTHS 100 TO 157.3 FT.	RATED LOAD IN POUNDS		FOR ALL BOOM LENGTHS 107.7 TO 166 FT.	RATED LOAD IN POUNDS		FOR ALL BOOM LENGTHS 108.7 TO 166 FT.	RATED LOAD IN POUNDS		FOR ALL BOOM LENGTHS 128.7 TO 186 FT.	RATED LOAD IN POUNDS
FOR 136.3 FT. BOOM ONLY		360°	FOR 137.3 FT. BOOM ONLY		360°	FOR 157.3 FT. BOOM ONLY		360°	FOR 166 FT. BOOM ONLY		360°	FOR 166 FT. BOOM ONLY		360°	FOR 186 FT. BOOM ONLY		360°
36	78	9300	36			36			36			36			36		
40	76	8900	40	76	8000	40			40			40			40		
45	74	8500	45	74	7700	45			45			45			45		
50	72	8100	50	72	7300	50	77	5100	50	77	8300	50	77	7300	50		
55	69	7800	55	70	7000	55	75	4900	55	75	8100	55	75	7100	55		
60	67	7500	60	68	6700	60	73	4700	60	73	7700	60	73	6900	60	77	4800
65	65	7200	65	65	6400	65	71	4500	65	71	7300	65	71	6400	65	75	4600
70	62	7000	70	63	6200	70	69	4300	70	69	6900	70	70	6000	70	74	4400
75	60	6800	75	60	6000	75	67	4100	75	67	6500	75	68	5700	75	72	4200
80	57	6600	80	58	5800	80	65	3900	80	65	6200	80	66	5400	80	71	4000
85	54	6400	85	55	5600	85	62	3800	85	63	5900	85	64	5100	85	69	3800
90	52	6200	90	52	5400	90	60	3700	90	61	5600	90	62	4800	90	67	3700
100	45	4500	100	46	3900	100	55	3400	100	57	5100	100	57	4300	100	64	3400
110	37	3200	110	38	2500	110	50	3200	110	52	4000	110	52	3300	110	60	3100
						120	44	2800	120	46	2900	120	47	2200	120	56	2900
												120	47	2200	130	51	2600

NOTES

- See Main Load Rating Chart on outriggers for warnings, definitions, information and reeving.
- For Bucket Ratings on 60 ft. extension, deduct 20% from load ratings.
- Stability ratings do not exceed 85% of tipping loads
- When boom is not fully extended, use only boom angles, not operating radius to determine load rating.
- For boom angles not shown, use rating of next lower boom angle.
- 12,900 lb. counterweight.

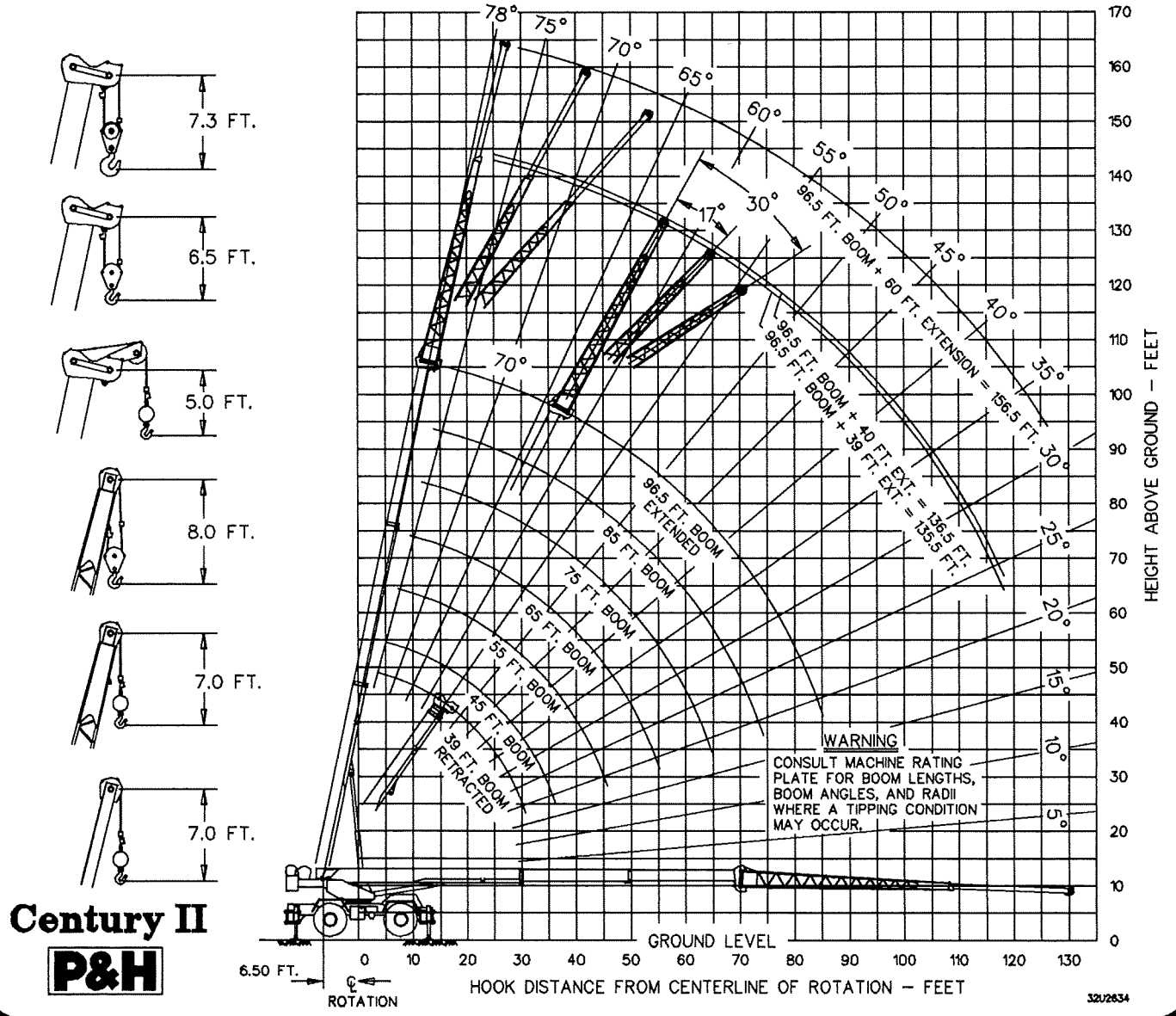
CHART 6

30° OFFSET EXTENSION IN POUNDS WITH OUTRIGGERS EXTENDED AND SET

LATTICE EXTENSION WITH PINNED SECTION RETRACTED						LATTICE EXTENSION WITH PINNED SECTION EXTENDED											
OPERATING HEIGHT	40 FT.		OPERATING HEIGHT	40 FT. TELESCOPIC		OPERATING HEIGHT	60 FT.		OPERATING HEIGHT	40 FT.		OPERATING HEIGHT	40 FT. TELESCOPIC		OPERATING HEIGHT	60 FT.	
	FOR ALL BOOM LENGTHS 79 TO 136.3 FT.	RATED LOAD IN POUNDS		FOR ALL BOOM LENGTHS 80 TO 137.3 FT.	RATED LOAD IN POUNDS		FOR ALL BOOM LENGTHS 100 TO 157.3 FT.	RATED LOAD IN POUNDS		FOR ALL BOOM LENGTHS 107.7 TO 166 FT.	RATED LOAD IN POUNDS		FOR ALL BOOM LENGTHS 108.7 TO 166 FT.	RATED LOAD IN POUNDS		FOR ALL BOOM LENGTHS 128.7 TO 186 FT.	RATED LOAD IN POUNDS
FOR 136.3 FT. BOOM ONLY		360°	FOR 137.3 FT. BOOM ONLY		360°	FOR 157.3 FT. BOOM ONLY		360°	FOR 166 FT. BOOM ONLY		360°	FOR 166 FT. BOOM ONLY		360°	FOR 186 FT. BOOM ONLY		360°
45	77	7100	45	77	6300	45			45			45			45		
50	75	6900	50	75	6100	50			50			50			50		
55	72	6700	55	73	5900	55			55	77	6800	55	78	5900	55		
60	70	6500	60	70	5700	60	77	3900	60	75	6600	60	76	5800	60		
65	68	6300	65	68	5500	65	75	3700	65	73	6500	65	74	5600	65		
70	65	6100	70	66	5400	70	73	3600	70	72	6400	70	72	5500	70	77	3700
75	63	6000	75	63	5200	75	71	3500	75	70	6100	75	70	5300	75	75	3600
80	60	5900	80	60	5100	80	69	3400	80	68	5800	80	68	5000	80	74	3500
85	57	5800	85	58	5000	85	66	3300	85	66	5600	85	66	4700	85	72	3400
90	54	5700	90	55	4900	90	64	3200	90	63	5300	90	64	4500	90	70	3300
100	48	4900	100	48	4200	100	59	3000	100	60	4900	100	59	4100	100	67	3200
110	40	3400	110	40	2700	110	54	2900	110	54	4300	110	55	3600	110	63	3000
						120	48	2800	120	48	3100	120	49	2400	120	59	2700
						130	40	2000	130	42	2100				130	54	2500

Crane Range Diagram - 96.5 foot Boom

CHART
7



NOTE

“ OPERATION OF THIS MACHINE IN EXCESS OF RATED LOADS AND DISREGARD OF INSTRUCTIONS IS AN UNSAFE PRACTICE AND WILL RESULT IN DENIAL OF WARRANTY CLAIMS. ”

Load Ratings - 96.5 foot Boom

CHART 8

RATED LOADS IN POUNDS ON OUTRIGGERS															
3-SECTION POWERED BOOM LENGTH IN FEET															
OPERATING RADIUS IN FT.	40 FT.		45 FT.		55 FT.		65 FT.		75 FT.		96.5 FT.				
	△	360°	△	360°	△	360°	△	360°	△	360°	△	360°			
10	68	130000	71	10200	75	94800							10		
12	64	115000	68	98400	72	88000	76	80400					12		
15	59	90000	64	90000	69	84000	73	72800	76	60500			15		
20	50	68500	56	68500	63	68500	68	63500	72	53000	74	44500	76	33000	20
25	39	53000	48	53000	57	53000	63	53000	68	45000	71	39000	74	32500	25
30	24	42000	38	42000	50	42000	58	42000	63	40000	67	34200	70	30000	30
35			25	34400	43	34400	52	34400	59	34400	63	30200	67	26700	35
40				34	27000	46	27000	54	27000	59	27000	64	24000	40	
45				23	21300	40	21300	49	21300	55	21300	60	21300	45	
50						32	17500	43	17500	51	17500	57	17500	50	
55						21	14500	37	14500	46	14500	53	14500	55	
60								29	11900	41	11900	49	11900	60	
65								19	10100	35	10100	44	10100	65	
70										28	8500	40	8500	70	
75										18	7200	35	7200	75	
80												28	6000	80	
85												21	5100	85	

DEFINITIONS:

Operating radius is the horizontal distance from the axis of rotation before loading to the center of the verticle hoist line or tackle with load applied.

Loaded boom angle, as shown in the column headed by Δ is the included angle between the horizontal and longitudinal axes of the boom base after lifting rated load at rated radius.

INFORMATION:

1. Crane load ratings, on outriggers, do not exceed 85% of tipping.
2. Ratings above the heavy line are based on the machine's hydraulic or structural competence and not on machine stability.
3. Deductions must be made from rated loads for stowed lattice extension, optional attachments, hooks and hook blocks, (see deductions chart), weights of slings and all other load handling devices shall be considered part of the load.
4. Crane load ratings with outriggers are based on outriggers fully extended and set to a distance of 11 feet 9-3/4 inches from the longitudinal axis of the carrier to the outrigger float pivot connection with all load removed from the carrier wheels.
5. Counterweight of 11,589 lbs, with none removable.

dzwigi24.pl

CHART 9

LOAD RATINGS IN POUNDS WITH OUTRIGGERS EXTENDED												
OPERATING RADIUS IN FT.	40 FT.		40 FOOT TELESCOPIC		60 FT.							
	△	360°	△	360°	△	360°						
30	77	16000	30	77	15500	30						
35	75	15000	35	75	14200	35	77	10000				
40	72	14000	40	73	13000	40	75	9400				
45	70	13000	45	70	12100	45	73	8700				
50	68	12000	50	68	11000	50	71	8000				
55	66	11000	55	67	10300	55	69	7500				
60	63	10500	60	64	9600	60	68	7000				
65	61	10000	65	61	9100	65	66	6600				
70	58	9500	70	59	8500	70	64	6200				
75	56	8900	75	56	8000	75	62	5900				
80	53	7700	80	54	7000	80	59	5600				
85	50	6700	85	51	6000	85	57	5300				
90	47	5800	90	48	5100	90	55	5000				
100	41	4300	100	41	3600	100	50	4500				
110	33	3200	110	34	2500	110	45	3400				
120	23	2200	120	24	1500	120	38	2500				
						130	32	1600				

WARNING:
Do not exceed 130 ft. radius (with or without hook block) with 60 ft. boom extension or a tipping condition will occur.

- NOTE:**
1. When boom is not fully extended, use only boom angles, not operating radius, to determine load rating.
 2. For boom angles not shown, use rating of next lower boom angle.
 3. For bucket ratings on 60 ft. extension, deduct 20% from load ratings.

WARNINGS:

1. Loaded boom angles at specified lengths give only an approximation of the operating radius. The boom angle before loading should be greater to account for deflections. Do not exceed the operating radius for rated loads.
2. Positioning or operation of powered boom lengths at radii beyond the maximums or minimums shown, is not intended or approved.
3. Positioning or operation of lattice extensions at boom angles beyond the maximums or minimums shown, is not intended or approved.
4. For powered boom lengths not shown, use rating of next longer powered boom. For load radii not shown, use rating of next longer radius.
5. Crane load ratings on outriggers are based on freely suspended loads with the machine levelled and standing on a firm uniform supporting surface. No attempt shall be made to move the load horizontally on the ground in any direction.
6. Practical working loads depend on supporting surface, wind, and other factors affecting stability, hazardous surroundings, experience of personnel, and proper handling, all of which must be taken into account by the operator.
7. The maximum load which may be telescoped is limited by hydraulic pressure, boom angle, and powered boom lubrication. It is safe to attempt to telescope any load within the limits of the load rating chart.
8. When lifting a load all sections of powered boom must be equally extended within one foot.

CHART 10

LOAD RATINGS FOR OFFSET EXTENSION WITH 96.5 FOOT BOOM - OUTRIGGERS EXTENDED

IN POUNDS WITH 17° OFFSET EXTENSION						IN POUNDS WITH 30° OFFSET EXTENSION					
40 FT. TELESCOPIC			60 FT.			40 FT. TELESCOPIC			60 FT.		
OPERATING T. INF. T.	FOR ALL BOOM LENGTHS 79 TO 136.3 FT.	RATED LOAD IN POUNDS	OPERATING T. INF. T.	FOR ALL BOOM LENGTHS 80 TO 137.3 FT.	RATED LOAD IN POUNDS	OPERATING T. INF. T.	FOR ALL BOOM LENGTHS 107.7 TO 166 FT.	RATED LOAD IN POUNDS	OPERATING T. INF. T.	FOR ALL BOOM LENGTHS 128.7 TO 186 FT.	RATED LOAD IN POUNDS
FOR 136.3 FT. BOOM ONLY	360°		FOR 137.3 FT. BOOM ONLY	360°		FOR 166 FT. BOOM ONLY	360°		FOR 186 FT. BOOM ONLY	360°	
35	78	9100	35			35			35		
40	76	8700	40	77	7900	40			40		
45	74	8300	45	74	7500	45	77	7000	45	77	6200
50	72	8000	50	72	7200	50	75	6800	50	75	6000
55	69	7700	55	70	6900	55	73	6600	55	73	5800
60	67	7400	60	68	6600	60	70	6400	60	70	5600
65	65	7100	65	65	6300	65	68	6200	65	68	5500
70	62	6900	70	63	6100	70	65	6100	70	66	5300
75	60	6700	75	60	5900	75	62	6000	75	63	5200
80	57	6500	80	58	5700	80	60	5800	80	60	5100
85	54	6300	85	55	5500	85	57	5700	85	57	4900
90	51	6100	90	52	5300	90	54	5600	90	54	4700
100	45	4800	100	45	4200	100	47	5100	100	48	4500
110	37	3600	110	38	2900	110	39	3700	110	40	3100
						120	44	3000			
						130	37	2100			
									120	47	2700
									130	40	2300

Load Ratings on Tires

126 ft. Boom

96.5 ft. Boom

CHART 11

CHART 12

CHART 13

OPERATING T. INF. T.	29.5 X 25-28 PLY TIRES				OPERATING T. INF. T.
	Stationary		Pick & Carry Boom Centered Over Front		
	±6° Arc over front	360° arc	Creep	2-1/2 mph	
10	77900	48700	76300	57700	10
12	67000	41200	66100	49500	12
15	55000	32700	54500	40400	15
20	42900	19700	41400	30100	20
25	28100	13000	28100	23200	25
30	19900	8900	19900	18300	30
35	14700	6100	14700	14700	35
40	11200	4100	11200	11200	40
45	8600	2600	8600	8600	45
50	6600		6600	6600	50
55	5000		5000	5000	55
60	3700		3700	3700	60
65	2700		2700	2700	65

OPERATING T. INF. T.	29.5 x 25-28 PLY TIRES				OPERATING T. INF. T.
	Stationary		Pick & Carry Boom Centered Over Front		
	±6° Arc over front	360° arc	Creep	2-1/2 mph	
10	78400	49000	76900	58200	10
12	67700	41900	66800	50300	12
15	55900	31400	55500	41400	15
20	41300	19200	41300	31300	20
25	27300	12800	27300	24500	25
30	19500	8900	19500	19500	30
35	14700	6400	14700	14700	35
40	11400	4600	11400	11400	40
45	8900	3100	8900	8900	45
50	7100	2000	7100	7100	50
55	5600		5600	5600	55
60	4400		4400	4400	60
65	3400		3400	3400	65

OPERATING T. INF. T.	26.5 x 25-26 PLY TIRES				OPERATING T. INF. T.
	Stationary		Pick & Carry Boom Centered Over Front		
	±6° Arc over front	360° arc	Creep	2-1/2 mph	
10	71500	44600	60300	42500	10
12	61700	37900	52200	36400	12
15	50700	30500	43000	29600	15
20	38400	18900	32600	21800	20
25	26900	12600	25600	16600	25
30	19200	8800	19200	12900	30
35	14400	6200	14400	10100	35
40	11200	4500	11200	7900	40
45	8700	3000	8700	6100	45
50	6900		6900	4700	50
55	5400		5400	3500	55
60	4200		4200	2500	60
65	3200		3200		65

CHART 14

Tire Inflation			
Tire Size	Static & Creep	2 1/2 mph	Travel
29.5x25-28 PR	75 psi	65 psi	55 psi
26.5x25-26 PR	80 psi	65 psi	55 psi

DEFINITIONS:
Creep is motion for less than 200 feet in a 30 minute period and not exceeding 1 mph.

NOTES:
Operation of this equipment in excess of rated loads and disregards of instructions is an unsafe practice and will result in denial of warranty claims.

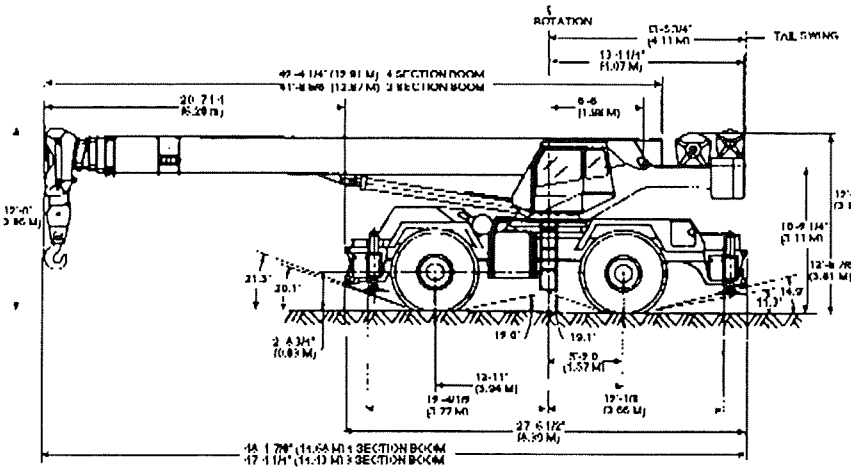
- WARNINGS:**
- Crane load ratings without outriggers depends on tire capacity and condition of tires inflated per table.
 - When transporting a load, machine must be on firm, level surface with mechanical house lock engaged. The load must be centered over front of machine and restrained from swinging. See areas of operation for working ranges.
 - Crane load ratings on tires apply only when rear axle lockouts are engaged when swinging 360°.
 - Lift loads with minimum boom length; Do not exceed 85 foot boom length when lifting on tires.
 - Do not attempt lifts on tires with extension erected.
 - Maximum recommended boom angle on tires is 68° without load.

- INFORMATION:**
- Deductions must be made from rated loads for stowed lattice extension, optional attachments, hooks and hook blocks. (See Deduction Chart). Weights of slings and all other load handling devices shall be considered a part of the load.
 - Ratings above the heavy line are based on structural competence and not on machine stability.
 - It is recommended that outriggers be extended as far as possible and clear of ground when lifting on tires.
 - Stability ratings do not exceed 75% of tipping loads.

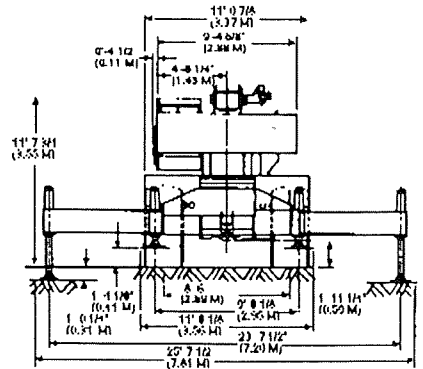
DEDUCTIONS TO BE MADE FROM LOAD RATINGS IN POUNDS

DESCRIPTION	WITHOUT HOOK BLOCK ON BOOM POINT	HOOK BLOCK ON POWERED BOOM POINT					
		8.5 - 20 TON	65 TON	8.5 - 20 TON WITH AUXILIARY SHEAVE	65 TON WITH AUXILIARY SHEAVE		
HOOK BLOCK WEIGHT	-	580	1130	775	1325		
40 FT. LATTICE EXTENSION	Stowed	-	800	1340	990	1530	
	Erected only	-	4070	4610	4260	4800	
	8.5-15 ton Ball	-	5760	6300	5950	6490	
	20 ton Block	-	6170	6710	6360	6900	
40 - 60 FT. LATTICE EXTENSION	Stowed	-	620	1170	820	1360	
	Erected only	-	5680	6220	5870	6410	
	8.5-15 ton Ball	-	7390	7930	7580	8120	
	20 ton Block	-	7800	8340	7990	8540	
40 FT. LATTICE EXTENSION	Erected only	-	5680	6220	5870	6410	
	8.5-215 ton Ball	-	7840	8380	8030	8570	
	20 ton Block	-	8360	8900	8550	9090	
HOISTING LOAD FROM EXTENSION	40 FT. LATTICE EXTENSION	8.5-15 ton Ball	470	820	1140	930	1250
	20 ton Block	580	930	1250	1040	1370	
	40 - 60 FT. LATTICE EXTENSION	8.5-15 ton Ball	470	810	1130	920	1240
20 ton Block	580	920	1240	1040	1360		
60 FT. LATTICE EXTENSION	8.5-15 ton Ball	470	770	1050	870	1150	
	20 ton Block	580	880	1160	980	1260	

NOTE: THESE LOAD DEDUCTIONS APPLY ONLY TO P&H SUPPLIED EQUIPMENT



dimensions



- VEHICLE TURNING DIAMETER -4 WHEEL STEER CRAMP 41'-5.0*(12.62 M)
- FRONT AXLE STEER 68'-8.90*(20.95 M)
- VEHICLE CLEARANCE DIAMETER -4 WHEEL STEER CRAMP 49'-7.87*(15.13 M)
- FRONT AXLE STEER 75'-2.40*(22.92 M)
- BOOM CLEARANCE DIAMETER -4 WHEEL STEER 72'-4.57*(22.06 M)
- FRONT AXLE STEER 96'-0.66*(29.28 M)



NOTE: All designs, specifications and components of the equipment described above are subject to change at the manufacturer's sole discretion at any time and without advance notice. Data published herein is informational in nature and shall not be construed to warrant suitability of the machine for any particular purpose as performance may vary with conditions encountered. The only warranty applicable is our standard warranty for this machine.

Address Inquiries to:



PPM Cranes, Inc.
 Manufacturer of P&H mobile cranes.
 P.O. Box 260002
 Conway, SC 29526-2602 USA
 Phone 1-803-349-6900