

P&H[®] Century T-500

dzwigi24.pl

Hydraulic Truck Crane
50 Ton Maximum Capacity
170 ft. (51.8 m) Boom plus Extension



- Travels over 50 mph highway speed.
- Roadable in most states.
- Four-plate boom, welded inside and out gives superior strength. No derate for bucket work.
- Two swingaway lattice extensions are available: a one piece, 35' extension and a telescopic 35' to 60' extension. The 35' extension has a removable point section for easy conversion to telescopic type. Both can be offset to 17° or 30° for up and over reaches.
- Extra rugged construction for long life on the tough jobs.
- P&H winches have 'bent axial' piston motors, strong line pulls, fast line speeds.
- Operator's cab is roomy, vibration isolated, with deluxe seat for comfort, handy controls for easy operation.

Specifications

Specifications

ITEM NO. This P&H crane meets the requirements of ANSI B30.15 (1982). Boom structure (boom, lattice extension and jib) has been tested per SAE J1063, machine stability tested per SAE J765. LOAD RATINGS shown apply only to machine as manufactured and marketed by Century II, Inc.

BASIC MACHINE

Attachment



Boom: 34 ft. (10.4 m) retracted to 110 ft. (33.5 m) extended length, four section boom consisting of a boom base, two hydraulically extended and retracted sections and a fourth pinned section which can be hydraulically extended and retracted. Boom point has five 17.362" (440mm) dia. main metallic sheaves with roller bearings and two idler sheaves with bronze bearings.

Each section of this rectangular boom consists of four plates welded both inside and out for superior strength. Large, non-metallic slider pads are adjustable.

For performance characteristics, see Chart no. 1, Crane Range Diagram, and Charts nos. 2, 3, 8 and 9, Lifting Capacities on Main Boom.

See Optional Equipment for lattice extensions, auxiliary sheave, and hook blocks.

Counterweight: 8,000 lbs (3630 kg) standard, non-removable type. 1080 lbs. (490 kg) auxiliary counterweight to be used on units without an auxiliary winch.

Upperstructure



Operator's Cab: Fully enclosed, all-weather steel cab with full vision safety glass and hinged top window with tinted glass. Cab is cushion-mounted for vibration isolation.

Operator's Cab Standard Equipment: Contains all crane function controls. Front control console includes: engine water temperature gauge, engine oil temperature gauge, hydraulic oil temperature gauge, air pressure gauge, fuel gauge, volt meter, winch high speed indicators; main winch drum turn indicator, dash light, electrical horn, windshield wiper, tachometer. Deluxe operator's seat with torsion suspension and vinyl covering, fire extinguisher and seat belts.



Controls: Joy-stick controls are an integral part of the seat arm rests. Left hand side operates swing and auxiliary winch. Right hand side operates main winch and boom hoist. Front floor mounted foot pedals for swing brake, boom telescope and engine throttle. Front console instrument panel contains ignition switch, hand throttle control, swing lock control, electrical outrigger control panel tachometer, oil pressure, voltage, water temperature and fuel level gauges.

Electrical system: 24 volt negative ground. Wiring harnesses have protective covering and are independently clamped to the framework, and have environmentally sealed Deutsch connectors. Toggle switches in operator's cab are environmentally sealed.

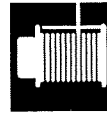
Throttle Control: Variable electrical control for foot operation, and positive position cable control for hand use.

Operational Aids

Krueger (ATB) anti-two block warning device with audio-visual warning. For main boom only.

Krueger (HAP) boom angle indicator with audio-visual warning.

Winches



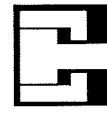
Main Winch: P&H model 1580 with two speed, bent axial piston motor, mounted to rear of revolving frame. Planetary gearing and equal speed, power raising and lowering. Infinitely variable speed control. Spring applied, hydraulically released load holding multi-disc brake is automatic. Complete with 550' of .75" wire rope.

- Drum: 15" (381mm) pitch diameter
18.5" (479mm) wide
23.5" (597mm) flange diameter
- Wire Rope: .75" (19mm) dia. 6 x 25 extra improved plow steel with 7x7 IWRC. Strength limit: 16,800 lbs. (7,619 kg).
- Drum Capacity: 554 ft. x .75" (19mm) dia., 5 layers.
- Line Pull (max.): 18,282 lbs. (8,291 kg) 1st layer, low speed.
13,223 lbs. (5,997 kg) 5th layer.
- Available Line Pull (for starting loads in mid-air) (max.): 11,000 lbs. (4,991 kg) 5th layer
- Line Speed (max.): (At 2750 engine rpm and with .75" wire rope) 642 ft./min. (196 m/min.) 5th layer, high speed.

See Chart No. 5, Hoist Reeving, for rope capacities and parts of line required.

Auxiliary Winch: See Optional Equipment.

SHEAVE AND DRUM TO WIRE ROPE RATIOS: (Pitch Diameters)	Sheave to Wire Rope	Drum to Wire Rope
Main Boom Sheaves .75" Wire Rope .625" Wire Rope	24.15:1 28.78:1	- -
Main Winch .75" Wire Rope .625" Wire Rope	- -	20.0:1 23.8:1



Boom Hoist: Two 7.874" (200mm) I.D. cylinders, double-acting. Hydraulically powered raising and lowering with holding valve.

Boom Telescope: Two 6.3" (160mm) I.D. cylinders, double-acting. Hydraulically powered raising and lowering with holding valve. Supplied by a single hose loop.

Hydraulic System

Filters: Two 10-micron nominal return line filters mounted externally of the hydraulic reservoir. All return oil is filtered. Indicators external.

Pump Drive: Driven off carrier engine crankshaft, with manual pump disconnect for highway travel. 1.260 pump speed to 1.0 engine speed drive ratio.

Pumps: One tandem gear pump operating at 2646 full load rpm, with the first section providing 51.7 gpm (196 l/m) to the boom hoist and telescope circuits, and the second section providing 42.5 gpm (161 l/m) to the main and auxiliary winch circuit.

One tandem gear pump operating at 2646 full load rpm, with the first section providing 27.4 gpm (104 l/m) to the outrigger and winch boost circuits, and the second section providing 35.1 gpm (133 l/m) to the swing circuit.

One Vickers vane pump, driven from the engine accessory drive, operating at 2100 full load rpm, provides 19.5 gpm (74 l/m), regulated to 8 gpm (30 l/m) to the steering circuit.

Oil Reservoir: 172 gallons (651 liters) mounted at front, right side of engine frame.

Oil Cooler: Oil to air, tube and fin type with internal turbulator.

Control Valves: One single spool valve for swing circuit.

One two spool valve with one spool for boom hoist and one spool for telescope circuits.

One two spool valve, with one spool for main winch and one spool for auxiliary winch circuits.

Control lever shut-off device for anti-two block, boom angle indicator and load moment systems.

Swing System



Swing Unit: Hydraulic motor driving through gear reducer to pinion gear. 360° continuous rotation to 2.4 rpm full load.

Swing Gear: Single shear ball swing bearing with internal spur gear.

Swing Brake: Spring applied, hydraulically released, internal disc brake, integral with swing reducer. Hand brake control lever mounted on side console in cab. A manual foot pedal applies brake for static holding.

House Lock: 360° gear segment type lock manually engaged with house lock lever in cab.

Carrier



Type: P&H 8 x 4

Weight: Including ball bearing swing circle, hydraulic outriggers, and standard tires: 34,099 lbs. (15,447 kg).

Frame: Rectangular frame members of 80,000 psi (5600kg/cm²) yield strength alloy steel, reinforced with box constructed cross members of 80,000 psi (5600 kg/cm²) yield strength alloy steel. Engine frame is channel construction of 47,000 psi (3300 kg/cm²) yield strength alloy steel.



Outriggers: Hydraulic out and down type. Eight double-acting hydraulic cylinders for independent horizontal and vertical motion of each beam operated from the operator's cab or at each side of the carrier. Each vertical cylinder is equipped with a holding valve.

Outrigger beams: 100,000 psi yield strength alloy steel box extending to a maximum spread of 23' 7" (7.2 m) from centerline of float to centerline of float with the machine fully raised on the outriggers. Retracted width of the outriggers without floats is 9' 10" (3.0 m).

Outrigger Floats: Individually removable floats with storage on carrier. Float size 24" (610mm) dia. with effective nominal surface area of 452 sq. in. (2920 cm²) per float.

Steering: Hydraulic powered gear and integral valve with a hydraulic power assist cylinder on each front axle. Tilt and telescope steering column standard.



Cab: One man, left side, low profile fully enclosed all-weather steel cab with full vision safety glass. Cab is cushion mounted for vibration isolation.

Cab Equipment: Contains all controls and instrumentation, including illuminated instrument panel with speedometer, tachometer, hour meter, voltmeter, air pressure gauges, low air pressure indicator lights, fuel gauge, oil pressure gauge, water temperature gauge, air horns, west coast mirrors, electric windshield wiper, windshield washer, engine conditioning warning system with noise alarm and warning light for high temperature and low oil pressure, heater and defroster, Deluxe operator's seat with torsion suspension and vinyl covering, seat belts.

Lights: Dual headlights, taillights, stop lights, front and rear direction signals with emergency flashers, rear license plate light, front, rear and side clearance lights with reflectors, dome light, and front and rear identification lights.

Miscellaneous Carrier Equipment: Front bumper, full fenders, sliding engine hood, tow hooks front and rear, carrier mounted boom rack, dunnage boxes, float storage racks, audio back-up warning device, fire extinguisher.

Brakes, Service: Front axles - air operated, cam actuated drum and shoe type.

Rear axles - air operated, spring type safety chambers, cam actuated, drum and shoe type.

Brakes, Parking: Cam actuated, drum and shoe type on rear axles. Spring applied, air released for safety.

Front Axles: Tubular tandem.

Rear Axles: Single reduction with interaxle differential. Ratio 6.17:1.

Suspension: Front axles: - four spring mounted tandem with torque rods.

Rear axles - Solid bogie mounted tandem with torque rods.

Transmission: Road Ranger RTO-11613, 13 speeds forward, 3 reverse.

Clutch: Spicer 14" (356mm) two plate with asbestos linings, coaxial torque dampener, upshift clutch brake and air actuation assist.

Radiator: Water to air, tube and fin type core. Thermostatic temperature controlled.

Air Cleaner: Donaldson single-stage primary dry air cleaner with "Duralife" filter media.

Muffler: Donaldson - muffler and resonator.

Electrical: 24 volt system with negative ground. Two 8D batteries with a reserve capacity of 398 min. and CCA at 0°F of 885 amps. Wire harnesses have environmentally sealed Deutsch connectors.

Fuel Tank: FWA approved steel tank, 80 gal. (303 liter) mounted on right side of carrier, behind front outriggers.

Tires: Front 15:00 R 22.5 18 ply; rear 11:00 x 20 14 ply duals.

See Chart no. 15 for proper tire inflation.



Power Plant

Make: Detroit Diesel Allison 6L71TA-DDEC
Max. Horsepower: 270 hp (202 kw) @ 2100 rpm
Max. Torque: 850 ft.lbs. (117.5 kg/m) @ 1200 rpm
No. Cylinders: 6
Bore & Stroke: 4.25" (107.9mm) x 5.0" (127mm)
Displacement: 426 cu. in. (6.98 liters)
Cycles: 2
Alternator: Delco 24 volt, 65 amp
Aspiration: Turbocharged
Air Compressor: Bendix TU-FLO 501



Performance:

GVW: 77,000 lb (34,920 kg), tires: 15:00 R 22.5 front, 11:00 x 20 rear, counterweight 8000 lbs.

Low gear: 2.2 mph (3.5 km/hr) 35% grade
High gear: 51 mph (82 km/hr) 1.1% grade

Speed and gradeability will vary due to engine performance, vehicle weight and optional tires. Gradeability based on SAE J688.

End Basic Machine

See page 4 for Optional Equipment and Accessories

Optional Equipment and Accessories

ITEM NO.	Attachment Options and Accessories
125	Lattice Extension: 35 ft. (Item 145 included w/ new machine). Swingaway lattice structure with a detachable point section for easy conversion to telescopic type extension with a single metallic sheave. It can be put into operating condition by pivoting from its stored position on right side of boom base section. Self storing pins connect extension to boom head. In the operating position the extension is offset 2° from the main boom. Includes anti-two block material.
135	Telescopic Lattice Extension: 35 ft. to 60 ft. (Item 150 included w/ new machine). Swingaway lattice structure boom extension with a welded four plate telescope section with a single metallic sheave. It can be put into operating condition by pivoting from its stored position on the right side of the boom base section and pinned to the boom head. Telescopic section is then extended on rollers and pinned. The telescopic section can be replaced with a stub head section when extra length is not required. In the operating position the extension is offset 2° from the main boom. Includes anti-two-block material. <i>For performance characteristics see Chart no 1: Crane Range Diagram, and Chart nos. 3, 6, 7, 9, 10 and 11: Load Ratings for Lattice Extension.</i>
140	Offset Mechanism: Pivoting links which allow items 125 and 135 to offset 17° or 30° from the main boom.
145	Material for storing Item 125, 35' extension, on the right side of boom. (For future installation of extension).
150	Material for storing Item 135, 35' to 60' extension, on right side of boom. (For future installation of extension).
160	Auxiliary Boom Point Sheave: Boom point mounted with single metallic sheave, includes anti-two block material.
185	Counterweight: 8,000 lbs. (3630 kg) with removable 7525 lbs. (3414 kg) insert, removable with a self-contained raising or lowering device using the winch. Replaces standard, non-removable 8000 lbs. counterweight.
205	Auxiliary Winch: P&H model 1580, same as main winch, mounted to rear of revolving frame on the counterweight.
220	Wire Rope for Auxiliary Winch: .75" x 460', 8 x 19 spin resistant
230	Drum Turn Indicator: For auxiliary winch, mechanical.
235	Hook Block: 50 ton, 5 sheaves
240	Hook Block: 45 ton, 4 sheaves
245	Hook Block: 20 ton, 1 sheave
255	Weighted Jib Hook: 8.5 ton, with swivel
260	Cable Spooling Device: Main or auxiliary winch drum
265	Independent Winch Control: Two pump circuit to give independent control of main and auxiliary winches.

ITEM NO.	Miscellaneous Options
405	Windshield Washer: Upper
410	Window Wiper: Roof
415	Upper Heater & Defroster: Diesel
420	Upper Heater & Defroster: Propane w/out tank.
435	Vandalism Kit: Lexan Glass
440	Tinted Glass
455	Rotating Beacon: Amber, on roof of cab
460	Floodlight: (1), includes standard alternator
510	Tires: 16:00 R 22.5 18 ply front (4) 12:00 x 20 16 ply rear (8)
550	Spare Wheel & Tire: 15:00 R 22.5 18 ply - front
555	Spare Wheel & Tire: 11:00 x 20 14 ply - rear
560	Spare Wheel & Tire: 16:00 R 22.5 18 ply - front
565	Spare Wheel & Tire: 12:00 x 20 16 ply - rear
625	Pintle Hook: front or rear
635	Cold Weather Starting Aid
645	Tire Inflation Kit

Operational Aids

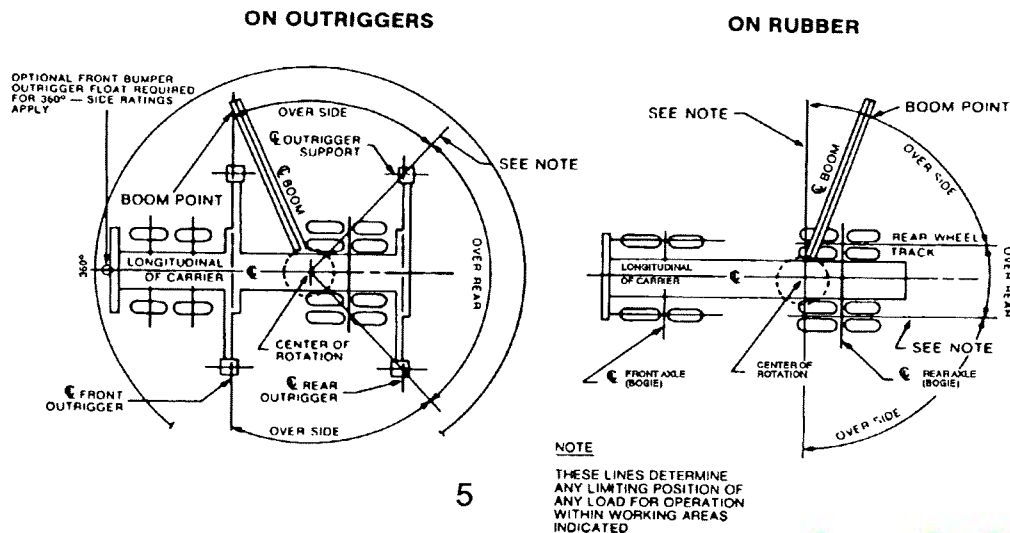
720	P.A.T. load moment operational aid DS350 microprocessor system - includes load moment device w/ audio-visual warning, rated load, actual load, tare, radius, angle, length and height of boom tip indicators. Includes control lever lockouts (magnetic valve shut-off devices).
730	Krueger (HLAP) boom angle, length, radius indicators with angle preset and audio-visual warning.
745	Krueger load moment system (Mark III). Includes load moment device w/ audio-visual warning, radius, angle, length w/ angle preset.

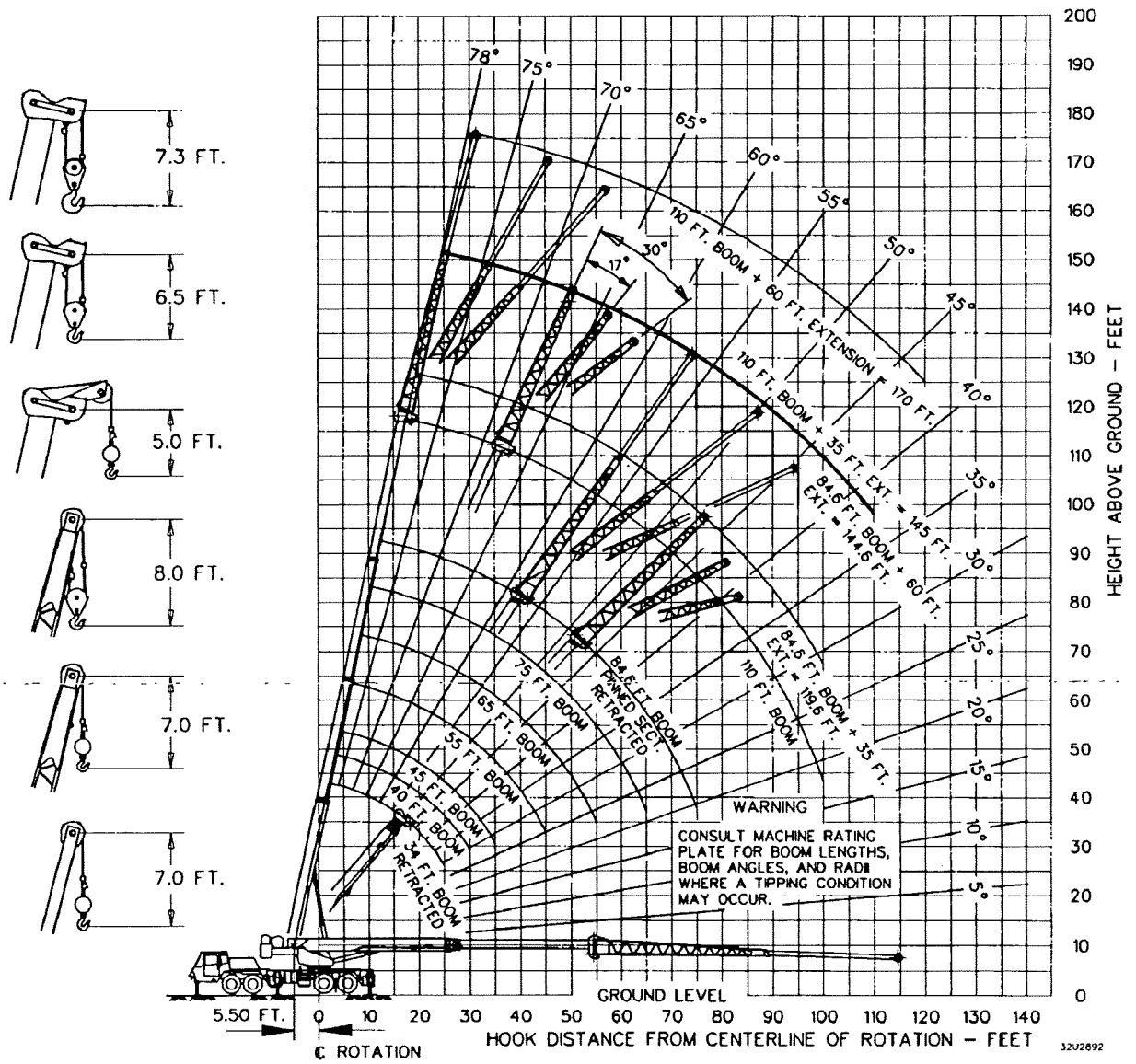
END OPTIONAL EQUIPMENT

dzwigi24.pl

Axle Loadings						
	POUNDS			KILOGRAMS		
	GROSS	FRONT	REAR	GROSS	FRONT	REAR
BASIC CARRIER	33457	15009	18448	15176	6808	8368
BASIC UPPER	5441	448	4993	2468	203	2265
STANDARD EQUIPMENT						
110 FT. 4-SECT. BOOM	17555	13140	4415	7963	5960	2003
BOOM HOIST CYLINDERS	2063	1041	1023	936	472	464
8000 LB. COUNTERWEIGHT	8016	-3226	11241	3636	-1463	5099
MAIN WINCH - MODEL 1580	1080	-301	1381	490	-136	626
MAIN WINCH WIRE ROPE .75" X 515	536	-149	685	243	-68	311
AUX. WINCH OR 1080 LB. COUNTERWEIGHT	1080	-437	1518	490	-198	688
DETROIT DIESEL 6L 71TA ENGINE	4288	4299	-11	1945	1950	-5
FRONT TIRES & RIMS-(4) 15:00R22.5 18 PR	1237	1237	0	561	561	0
REAR TIRES & RIMS-(8) 11:00X20 14 PR	2037	0	2037	924	0	924
MULTI-POSITION SWING LOCK	33	7	26	15	3	12
HYDRAULIC FRONT STABILIZER	465	671	-206	211	304	-93
BASIC MACHINE	77288	31739	45550	35058	14396	20662
ADJUSTMENTS FOR OPTIONS:						
BASIC MACHINE:						
REMOVABLE 7525 LB. CWT. INSERT	-7525	3048	-10573	787	1382	-4796
FRONT TIRES & RIMS - (4) 16:00R22.5 18PR	103	103	0	47	47	0
REAR TIRES & RIMS - (8) 12:00X20 16 PR	170	0	170	77	0	77
MULTI POSITION SWING LOCK	33	7	26	15	3	12
ADDITIONS FOR OPTIONS:						
ATTACHMENTS:						
35 FT. BOOM EXTENSION	1735	1353	382	787	614	173
35 FT. - 60 FT. BOOM EXTENSION	2899	2150	750	1315	975	340
BOOM EXTENSION OFFSET INST.	201	331	-131	91	150	-59
AUX. BOOM POINT SHEAVE	152	167	-115	69	121	-52
45 TON HOOK BLOCK - AT FRNT. TOW HOOK	899	1429	-529	408	648	-240
50 TON HOOK BLOCK - AT FRNT. TOW HOOK	946	1502	-557	429	681	-252
20 TON HOOK BLOCK - ON REAR DECK	580	-184	764	263	-83	346
8.5 TON BALL HOOK - ON REAR DECK	265	-84	348	120	-38	158
AUX. WINCH ROPE .75" X 460'	487	-197	685	221	-89	310
UPPER:						
AUX. WINCH PLUMBING & CONTROLS	82	-12	94	37	-6	43
DIESEL HEATER	53	-1	54	24	0	24
PROPANE HEATER	55	-1	56	25	0	25
PROPANE TANK - FULL	49	-2	51	22	-1	23
FLOODLIGHTS	35	21	15	16	9	7
CARRIER:						
PINTLE HOOK	26	-10	37	12	-5	17
AIR DRYER	37	19	18	17	9	8

Area of Operations





Crane Range Diagram

Load Ratings - on Outriggers - with 8000 lbs. Counterweight PCSA Class 10-208

RATED LOADS IN POUNDS ON OUTRIGGERS																	
POWERED BOOM LENGTH IN FEET - MANUAL RETRACTED																	
OPERATING RADIUS FEET	34 FT.		40 FT.		45 FT.		55 FT.		65 FT.		75 FT.		84.66 FT.				
	LOADED BOOM ANGLE △°	RATED LOAD POUNDS	LOADED BOOM ANGLE △°	RATED LOAD POUNDS	LOADED BOOM ANGLE △°	RATED LOAD POUNDS	LOADED BOOM ANGLE △°	RATED LOAD POUNDS	LOADED BOOM ANGLE △°	RATED LOAD POUNDS	LOADED BOOM ANGLE △°	RATED LOAD POUNDS	LOADED BOOM ANGLE △°	RATED LOAD POUNDS			
	SIDE	REAR	SIDE	REAR	SIDE	REAR	SIDE	REAR	SIDE	REAR	SIDE	REAR	SIDE	REAR			
10	86	100000	70	82000	72	81000	76	75000							10		
12	82	86000	67	81500	70	76500	74	69000	77	60000					12		
15	56	71000	62	71000	65	70000	71	62000	74	54900	77	47200			15		
20	45	54000	53	54000	58	54000	65	53000	69	47300	73	39900	75	34700	20		
25	29	42000	43	42000	50	41900	59	41700	65	40800	69	34400	72	29900	25		
30			30	35700	40	33600	52	33500	59	33400	65	30000	68	26100	30		
35					28	27100	27100	45	27100	27100	54	27100	27100	60	26400	35	
40								37	20800	21200	48	20800	21200	55	20800	21200	40
45								26	16100	16800	41	16100	16800	50	16100	16800	45
50											34	13000	13700	45	13000	13700	50
55											24	10500	11300	39	10500	11300	55
60														32	8400	9200	60
65														22	6900	7600	65
70																	70
75																	75
80																	80
85																	85

CHART
2

CHART
3

LOAD RATINGS IN POUNDS WITH OUTRIGGERS EXTENDED														
PINNED SECTION EXTENDED			LATTICE EXTENSION WITH PINNED SECTION RETRACTED				LATTICE EXTENSION WITH PINNED SECTION EXTENDED				LATTICE EXTENSION WITH PINNED SECTION EXTENDED			
OPERATING RADIUS FEET	LOADED BOOM ANGLE △°	RATED LOAD POUNDS	35 FT. TELESCOPIC		60 FT. TELESCOPIC		35 FT. TELESCOPIC		35 FT. TELESCOPIC		35 FT. TELESCOPIC		60 FT. TELESCOPIC	
			SIDE	REAR	SIDE	REAR	SIDE	REAR	SIDE	REAR	SIDE	REAR	SIDE	REAR
25	77	21500	25	78	17000	25	78	16400	25					
30	74	19600	30	76	15600	30	76	15100	30					
35	72	17800	35	73	14500	35	73	13900	35	78	7100			
40	69	16100	40	71	13500	40	71	12900	40	74	6600			
45	66	14700	45	68	12600	45	68	12000	45	72	6300			
50	63	13400	50	66	11800	50	66	11200	50	70	6100			
55	60	12200	55	63	11100	55	63	10400	55	68	5700			
60	57	10000	60	60	10400	60	60	9800	60	66	5500			
65	53	8500	65	57	8900	65	57	8100	65	64	5400			
70	50	7200	70	54	7600	70	54	6800	70	62	5200			
75	48	6100	75	51	6400	75	51	5700	75	60	5100			
80	42	5100	80	48	5500	80	48	4700	80	57	4900			
85	38	4300	85	44	4600	85	44	3900	85	55	4600			
90	33	3600	90	40	3900	90	40	3100	90	52	4400			
100	19	2400	100	32	2700	100	32	1900	100	47	3200	3700		
110	19	-	110	19	-	110	19	-	110	41	2200	2700		
120	19	-	120	19	-	120	19	-	120	34	-	1800		

NOTE:
 1. WHEN BOOM IS NOT FULLY EXTENDED, USE ONLY BOOM ANGLES, NOT OPERATING RADIUS TO DETERMINE LOAD RATING.
 2. FOR BOOM ANGLES NOT SHOWN, USE RATING OF NEXT LOWER BOOM ANGLE.
 3. FOR BUCKET RATINGS ON 60 FT. EXTENSION, DEDUCT 20% FROM LOAD RATINGS.

WARNING:
 A TIPPING CONDITION WILL OCCUR (WITH OR WITHOUT HOOK BLOCK) WITH 35 FT. OR 60 FT. BOOM EXTENSION ERECTED, IF MAXIMUM OPERATING RADIUS SHOWN WITH LOAD RATING FOR RESPECTIVE OPERATING CONFIGURATION IS EXCEEDED.

CHART
4

CHART
5

DEDUCTIONS TO BE MADE FROM LOAD RATINGS IN POUNDS					
DESCRIPTION	WITHOUT HOOK BLOCK ON BOOM POINT	HOOK BLOCK ON POWERED BOOM POINT			
		8.5 - 20 TON	45-50 TON	8.5 - 20 TON WITH AUXILIARY SHEAVE	45-50 TON WITH AUXILIARY SHEAVE
HOISTING LOAD FROM POWERED BOOM					
35 FT. LATTICE EXTENSION	HOOK BLOCK WEIGHT	580	950	740	1100
	STOWED	700	1100	850	1250
	ERECTED ONLY	3550	3900	3700	4050
	8.5 TON BALL 20 TON BLOCK	4700 6000	5050 6350	4850 6150	5200 6500
55 FT. TELESCOPIC LATTICE EXTENSION	STOWED	700	1050	850	1200
	ERECTED ONLY	3500	5850	5650	6000
	8.5 TON BALL 20 TON BLOCK	6650 7950	7000 8350	6800 8100	7150 8500
	60 FT. TELESCOPIC LATTICE EXTENSION	ERECTED ONLY	3500	5850	5650
80 FT. TELESCOPIC LATTICE EXTENSION	STOWED	700	1050	850	1200
	ERECTED ONLY	3500	5850	5650	6000
	8.5 TON BALL 20 TON BLOCK	7100 8900	7450 9250	7250 9050	7600 9400
	HOISTING LOAD FROM EXTENSION				
35 FT. LATTICE EXTENSION	8.5 TON BALL	270	650	750	950
	20 TON BLOCK	580	950	1150	1250
55 FT. TELESCOPIC LATTICE EXTENSION	8.5 TON BALL	270	650	750	1000
	20 TON BLOCK	580	950	1200	1300
80 FT. TELESCOPIC LATTICE EXTENSION	8.5 TON BALL	270	600	800	850
	20 TON BLOCK	580	900	1100	1150

NOTE: THESE LOAD DEDUCTIONS APPLY ONLY TO P&H SUPPLIED EQUIPMENT. (SEE INFORMATION NOTE #3)

MAIN HOIST REEVING										
.75" WIRE ROPE BREAKING STRENGTH 58,800 LBS. 6 x 25 FW IWRC										
PARTS OF LINE	1	2	3	4	5	6	7	8	9	10
MAXIMUM LOAD	11000	22000	33000	44000	55000	66000	77000	88000	99000	100000
AUXILIARY HOIST REEVING										
.75" WIRE ROPE BREAKING STRENGTH 51,800 LBS. 8 x 19 SPIN RESISTANT										
PARTS OF LINE	1	2	3	4	5	6	7	8	9	10
MAXIMUM LOAD	10000	10000	30000	40000	50000	60000	70000	80000	90000	100000

- Definitions:**
- Operating radius is the horizontal distance from the axis of rotation before loading to the center of the vertical hoist line or tackle with load applied.
 - Loaded boom angle, as shown in the column headed by \triangle° is the included angle between the horizontal and the longitudinal axes of the boom base after lifting rated load at rated radius.

CHART 6

Load Ratings - on Outriggers - 8000 lbs Counterweight Offset Lattice Extension

LOAD RATINGS IN POUNDS FOR 17° OFFSET WITH OUTRIGGERS EXTENDED															
LATTICE EXTENSION WITH PINNED SECTION RETRACTED						LATTICE EXTENSION WITH PINNED SECTION EXTENDED									
OPERATING RADIUS IN FEET	35 FT.		35 FT. TELESCOPIC		60 FT. TELESCOPIC		OPERATING RADIUS IN FEET	35 FT.		35 FT. TELESCOPIC		60 FT. TELESCOPIC			
	FOR ALL BOOM LENGTHS 69 TO 119.6 FT.	LOADED BOOM ANGLE	RATED LOAD IN POUNDS		FOR ALL BOOM LENGTHS 69 TO 119.6 FT.	LOADED BOOM ANGLE		RATED LOAD IN POUNDS		FOR ALL BOOM LENGTHS 94.3 TO 145 FT.	LOADED BOOM ANGLE	RATED LOAD IN POUNDS		FOR ALL BOOM LENGTHS 119.3 TO 170 FT.	LOADED BOOM ANGLE
	SIDE	REAR	SIDE	REAR	SIDE	REAR		SIDE	REAR	SIDE	REAR	SIDE	REAR	SIDE	REAR
35	77	11100					35								
40	74	10400					40								
45	72	9900					45	77	9700	77	9100				
50	69	9500					50	75	9000	75	8300				
55	67	9100					55	73	8300	73	7600	78	5200		
60	64	8700					60	70	7700	71	7000	76	5000		
65	61	8400					65	68	7200	68	6500	75	4800		
70	58	8100					70	66	6700	66	6000	73	4600		
75	55	7000	7600				75	54	6200	64	5600	71	4400		
80	52	6000	6600				80	61	5800	61	5200	69	4100		
85	48	5100	5700				85	59	5400	59	4800	67	3900		
90	44	4300	4800				90	56	4900	56	4100	65	3600		
100	35	3000	3500				100	51	3600	51	2800	61	3100		
110	21	-	2300				110	44	2500	44	-	57	2800		
120							120	37	-	37	-	52	2000	2400	

CHART 7

LOAD RATINGS IN POUNDS FOR 30° OFFSET WITH OUTRIGGERS EXTENDED															
LATTICE EXTENSION WITH PINNED SECTION RETRACTED						LATTICE EXTENSION WITH PINNED SECTION EXTENDED									
OPERATING RADIUS IN FEET	35 FT.		35 FT. TELESCOPIC		60 FT. TELESCOPIC		OPERATING RADIUS IN FEET	35 FT.		35 FT. TELESCOPIC		60 FT. TELESCOPIC			
	FOR ALL BOOM LENGTHS 69 TO 119.6 FT.	LOADED BOOM ANGLE	RATED LOAD IN POUNDS		FOR ALL BOOM LENGTHS 69 TO 119.6 FT.	LOADED BOOM ANGLE		RATED LOAD IN POUNDS		FOR ALL BOOM LENGTHS 94.3 TO 145 FT.	LOADED BOOM ANGLE	RATED LOAD IN POUNDS		FOR ALL BOOM LENGTHS 119.3 TO 170 FT.	LOADED BOOM ANGLE
	SIDE	REAR	SIDE	REAR	SIDE	REAR		SIDE	REAR	SIDE	REAR	SIDE	REAR	SIDE	REAR
35							35								
40	78	8900					40								
45	75	8500					45								
50	72	8200					50	77	8100	77	7400				
55	70	8000					55	75	7600	75	6900				
60	67	7700					60	73	7100	73	6400				
65	64	7500					65	71	6600	71	5900	78	4100		
70	61	7300					70	68	6200	68	5500	76	3900		
75	57	7200					75	66	5900	66	5200	75	3800		
80	54	6300	6900				80	63	5600	63	4900	73	3700		
85	50	5400	5900				85	61	5300	61	4600	71	3500		
90	46	4500	5100				90	58	5000	58	4300	69	3300		
100	36	3100	3600				100	52	3800	52	3000	64	2900		
110	19	1800	2300				110	46	2700	46	1900	60	2600		
120							120	38	1800	38	2200	55	2300		

- NOTES:**
- SEE MAIN LOAD RATING CHART ON OUTRIGGERS FOR WARNINGS, DEFINITIONS, INFORMATION AND REEVING.
 - FOR BUCKET RATINGS ON 60 FT. EXTENSION, DEDUCT 20% FROM LOAD RATINGS.
 - STABILITY RATINGS DO NOT EXCEED 85% OF TIPPING LOADS.
 - WHEN BOOM IS NOT FULLY EXTENDED USE ONLY BOOM ANGLES, NOT OPERATING RADIUS TO DETERMINE LOAD RATING.
 - FOR BOOM ANGLES NOT SHOWN, USE RATING OF NEXT LOWER BOOM ANGLE.
 - 8000 LB. STANDARD COUNTERWEIGHT OR 8000 LB. OPTIONAL CWT. INCLUDING 7525 LB. REMOVABLE WT.

WARNINGS:

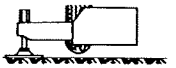
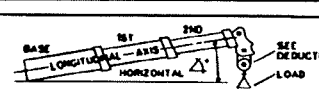
A TIPPING CONDITION WILL OCCUR (WITH OR WITHOUT HOOK BLOCK) WITH 35 FT. OR 60 FT. BOOM EXTENSION ERECTED, IF MAXIMUM OPERATING RADIUS SHOWN WITH LOAD RATING FOR RESPECTIVE OPERATING CONFIGURATION IS EXCEEDED.

dzwigi24.pl

Load Ratings - on Outriggers - PCSA Class 10-156

8000 lbs. Counterweight with 7525 lb. Insert Removed

RATED LOADS IN POUNDS ON OUTRIGGERS

POWERED BOOM LENGTH IN FEET — MANUAL RETRACTED

OR P A D E R I A T I O N S I N F O R T I P P I N G	34 FT.						40 FT.						45 FT.						55 FT.						65 FT.						75 FT.						84.68 FT.						
	LOADED BOOM ANGLE		RATED LOAD POUNDS		LOADED BOOM ANGLE		RATED LOAD POUNDS		LOADED BOOM ANGLE		RATED LOAD POUNDS		LOADED BOOM ANGLE		RATED LOAD POUNDS		LOADED BOOM ANGLE		RATED LOAD POUNDS		LOADED BOOM ANGLE		RATED LOAD POUNDS		LOADED BOOM ANGLE		RATED LOAD POUNDS		LOADED BOOM ANGLE		RATED LOAD POUNDS												
	°		SIDE	REAR	°		SIDE	REAR	°		SIDE	REAR	°		SIDE	REAR	°		SIDE	REAR	°		SIDE	REAR	°		SIDE	REAR	°		SIDE	REAR											
10	68		100000		70		82000		72		81000		76		71500																				10								
12	62		82700		67		81500		70		78500		74		66500		77		57000																12								
15	58		65500		62		65500		65		65400		71		59000		74		51000		77		45000												15								
20	44		50000		53		49800		58		49700		65		49600		69		45000		73		39300		75										20								
25	29		38900		43		38900		50		38800		59		38600		65		38500		68		34400		72										25								
30					30		28600		29100		40		28600		29100		52		28600		29100		59		28600		29100		64		28600		29100		68		28600	29100	30				
36										28		20700		21800		45		20700		21800		64		20700		21800		80		20700		21800		84		20700	21800	36					
40															36		15600		16800		48		15600		16800		55		15600		16800		60		15600	16800	40						
45															28		11800		13100		41		11800		13100		50		11800		13100		56		11800	13100	45						
50																					34		9200		10500		45		9200		10500		52		9200	10500	50						
55																					24		7200		8400		38		7200		8400		47		7200	8400	55						
60																																					60						
65																																						65					
70																																						70					
75																																							75				
80																																							80				
85																																							85				

CHART 8

CHART 9

LOAD RATINGS IN POUNDS WITH OUTRIGGERS EXTENDED

PINNED SECTION EXTENDED				LATTICE EXTENSION WITH PINNED SECTION RETRACTED				LATTICE EXTENSION WITH PINNED SECTION EXTENDED				LATTICE EXTENSION WITH PINNED SECTION EXTENDED				LATTICE EXTENSION WITH PINNED SECTION EXTENDED				LATTICE EXTENSION WITH PINNED SECTION EXTENDED																			
FOR ALL BOOM LENGTHS 59.34 TO 110 FT.				FOR ALL BOOM LENGTHS 80 TO 119.68 FT.				FOR ALL BOOM LENGTHS 80 TO 119.68 FT.				FOR ALL BOOM LENGTHS 84 TO 144.68 FT.				FOR ALL BOOM LENGTHS 84.34 TO 146 FT.				FOR ALL BOOM LENGTHS 84.34 TO 146 FT.				FOR ALL BOOM LENGTHS 119.34 TO 170 FT.															
OR P A D E R I A T I O N S I N F O R T I P P I N G	LOADED BOOM ANGLE	RATED LOAD IN POUNDS		LOADED BOOM ANGLE	RATED LOAD IN POUNDS		LOADED BOOM ANGLE	RATED LOAD IN POUNDS		LOADED BOOM ANGLE	RATED LOAD IN POUNDS		LOADED BOOM ANGLE	RATED LOAD IN POUNDS		LOADED BOOM ANGLE	RATED LOAD IN POUNDS		LOADED BOOM ANGLE	RATED LOAD IN POUNDS		LOADED BOOM ANGLE	RATED LOAD IN POUNDS		LOADED BOOM ANGLE	RATED LOAD IN POUNDS		LOADED BOOM ANGLE	RATED LOAD IN POUNDS										
°		SIDE	REAR	°		SIDE	REAR	°		SIDE	REAR	°		SIDE	REAR	°		SIDE	REAR	°		SIDE	REAR	°		SIDE	REAR	°		SIDE	REAR								
25	77		21500	25	78		17000	25	78		16400	25				25				25				25															
30	74		19600	30	76		15600	30	76		15100	30	78		73000	30				30				30															
35	72		17800	35	73		14500	35	73		13900	35	76		7100	35	77		12000	35	77		12000	35	78		11800	35											
40	69		16100	40	71		13500	40	71		12900	40	74		6600	40	75		10900	40	75		10900	40	76		10700	40	78		6700	40	78		6700				
45	66		13800	45	68		12800	45	68		12000	45	72		6300	45	73		10100	45	73		10100	45	74		9800	45	77		6600	45	77		6600				
50	63		10900	50	66		11300	50	66		10600	50	70		6100	50	71		8300	50	71		8300	50	72		8100	50	75		6200	50	75		6200				
55	60		8800	55	63		9200	55	63		8500	55	68		5700	55	69		8500	55	69		8500	55	70		8300	55	73		5800	55	73		5800				
60	58		7100	60	60		7600	60	60		6800	60	66		5500	60	67		7900	60	67		7900	60	68		7700	60	72		5700	60	72		5700				
65	53		5800	65	57		6200	65	57		5500	65	64		5400	65	65		8900	65	65		8900	65	66		8900	65	70		5600	65	70		5600				
70	49		4700	70	54		5100	70	54		4400	70	62		5200	70	63		5700	70	63		5700	70	64		5800	70	68		5400	70	68		5400				
75	46		3800	75	51		4200	75	51		3400	75	60		4800	75	60		4700	75	60		4700	75	61		4800	75	66		5000	75	66		5000				
80	42		3000	80	47		3400	80	47		2600	80	57		3900	80	58		3900	80	58		3900	80	59		3900	80	66		4300	80	66		4300				
85	37		2400	85	44		2700	85	44		1900	85	55		3200	85	55		3200	85	55		3200	85	56		3100	85	63		3600	85	63		3600				
90	32		1800	90	40		2100	90	40		-	2100	90	52		2600	90	52		2600	90	52		2600	90	53		2600	90	61		3000	90	61		3000			
100				100	31		1800	100					100	47		-	2300	100	47		-	2300	100	47		-	2300	100	56		2000	100	56		2000				

NOTE:

- WHEN BOOM IS NOT FULLY EXTENDED, USE ONLY BOOM ANGLES, NOT OPERATING RADIUS TO DETERMINE LOAD RATING.
- FOR BOOM ANGLES NOT SHOWN, USE RATING OF NEXT LOWER BOOM ANGLE.
- FOR BUCKET RATINGS ON 60 FT. EXTENSION, DEDUCT 20% FROM LOAD RATINGS.

WARNING:

A TIPPING CONDITION WILL OCCUR (WITH OR WITHOUT A HOOK BLOCK) WITH BOOM PINNED SECTION EXTENDED, OR WITH THE 35 FT. OR 60 FT. BOOM EXTENSION ERECTED, IF MAXIMUM OPERATING RADIUS SHOWN WITH LOAD RATING FOR RESPECTIVE OPERATING CONFIGURATION IS EXCEEDED.

- INFORMATION:**
- CRANE LOAD RATINGS DO NOT EXCEED 85% OF TIPPING.
 - RATINGS ABOVE THE HEAVY LINE ARE BASED ON THE MACHINE'S HYDRAULIC OR STRUCTURAL COMPETENCE AND NOT ON MACHINE STABILITY.
 - DEDUCTIONS MUST BE MADE FROM RATED LOADS FOR STOWED LATTICE EXTENSION, OPTIONAL ATTACHMENTS, HOOKS AND HOOKBLOCKS (SEE DEDUCTIONS CHART), WEIGHTS OF SLINGS AND ALL OTHER LOAD HANDLING DEVICES SHALL BE CONSIDERED A PART OF THE LOAD.
 - CRANE LOAD RATINGS WITH OUTRIGGERS ARE BASED ON OUTRIGGERS FULLY EXTENDED AND SET TO A DISTANCE OF 11 FEET 8 3/4 INCH FROM THE LONGITUDINAL AXIS OF THE CARRIER TO THE OUTRIGGER FLOAT PIVOT CONNECTION WITH ALL LOAD REMOVED FROM CARRIER WHEELS.

- WARNINGS:**
- LOADED BOOM ANGLES AT SPECIFIED BOOM LENGTHS GIVE ONLY AN APPROXIMATION OF THE OPERATING RADIUS. THE BOOM ANGLE BEFORE LOADING SHOULD BE GREATER TO ACCOUNT FOR DEFLECTIONS. DO NOT EXCEED THE OPERATING RADIUS FOR RATED LOADS.
 - POSITIONING OR OPERATION OF POWERED BOOM LENGTHS AT RADII BEYOND THE MAXIMUMS OR MINIMUMS SHOWN, IS NOT INTENDED OR APPROVED.
 - POSITIONING OR OPERATION OF LATTICE EXTENSIONS AT BOOM ANGLES BEYOND THE MAXIMUMS OR MINIMUMS SHOWN, IS NOT INTENDED OR APPROVED.
 - FOR POWERED BOOM LENGTHS NOT SHOWN, USE RATING OF NEXT LONGER POWERED BOOM. FOR LOAD RADII NOT SHOWN, USE RATING OF NEXT LONGER RADIUS.
 - CRANE LOAD RATINGS ON OUTRIGGERS ARE BASED ON FREELY SUSPENDED LOADS WITH THE MACHINE LEVELED AND STANDING ON A FIRM UNIFORM SUPPORTING SURFACE. NO ATTEMPT SHALL BE MADE TO MOVE A LOAD HORIZONTALLY ON THE GROUND IN ANY DIRECTION.
 - PRACTICAL WORKING LOADS DEPEND ON SUPPORTING SURFACE, WIND, AND OTHER FACTORS AFFECTING STABILITY, HAZARDOUS SURROUNDINGS, EXPERIENCE OF PERSONNEL, AND PROPER HANDLING, ALL OF WHICH MUST BE TAKEN INTO ACCOUNT BY THE OPERATOR.
 - THE MAXIMUM LOAD WHICH MAY BE TELESCOPED IS LIMITED BY HYDRAULIC PRESSURE, BOOM ANGLE, AND POWERED BOOM LUBRICATION. IT IS SAFE TO ATTEMPT TO TELESCOPE ANY LOAD WITHIN THE LIMITS OF THE LOAD RATING CHART.

- WHEN LIFTING A LOAD ALL SECTIONS OF POWERED BOOM MUST BE EQUALLY EXTENDED WITHIN ONE FOOT.

NOTES:

OPERATION OF THIS EQUIPMENT IN EXCESS OF RATED LOADS AND DISREGARD OF INSTRUCTIONS IS AN UNSAFE PRACTICE AND WILL RESULT IN DENIAL OF WARRANTY CLAIMS.

dzwigi24.pl

Load Ratings - on Outriggers - Offset Lattice Extension

CHART 10

8000 lbs. Counterweight with 7525 lb. Insert Removed

LOAD RATINGS IN POUNDS FOR 17° OFFSET WITH OUTRIGGERS EXTENDED															
LATTICE EXTENSION WITH PINNED SECTION RETRACTED						LATTICE EXTENSION WITH PINNED SECTION EXTENDED									
OPERATING RADIUS IN FEET	35 FT.		35 FT. TELESCOPIC		60 FT. TELESCOPIC		OPERATING RADIUS IN FEET	35 FT.		35 FT. TELESCOPIC		OPERATING RADIUS IN FEET	60 FT. TELESCOPIC		
	FOR ALL BOOM LENGTHS 69 TO 119.6 FT.		FOR ALL BOOM LENGTHS 69 TO 119.6 FT.		FOR ALL BOOM LENGTHS 94 TO 144.6 FT.			FOR ALL BOOM LENGTHS 94.3 TO 145 FT.		FOR ALL BOOM LENGTHS 94.3 TO 145 FT.			FOR ALL BOOM LENGTHS 119.3 TO 170 FT.		
FOR 119.6 FOOT BOOM ONLY	LOADED BOOM ANGLE	RATED LOAD IN POUNDS		LOADED BOOM ANGLE	RATED LOAD IN POUNDS		FOR 145 FOOT BOOM ONLY	LOADED BOOM ANGLE	RATED LOAD IN POUNDS		FOR 145 FOOT BOOM ONLY	LOADED BOOM ANGLE	RATED LOAD IN POUNDS		
	△	SIDE	REAR	△	SIDE	REAR		△	SIDE	REAR		△	SIDE	REAR	
35	77		11100	35	77		10400	35				35			
40	74		10400	40	75		9900	40				40			
45	72		9900	45	72		9300	45	78		5400	45	77		9100
50	69		9500	50	69		8900	50	76		5200	50	75		8300
55	67		9100	55	67		8500	55	74		5100	55	73		7600
60	64	8400	8700	60	64	7700	8100	60	72		4900	60	71		7000
65	61	7000	8000	65	61	6300	7200	65	70		4700	65	68		6500
70	58	5800	6700	70	58	5100	6000	70	67		4500	70	66	6300	6700
75	55	4800	5700	75	55	4000	4900	75	65		4300	75	64	5300	6200
80	51	3900	4700	80	51	3100	4000	80	63		4100	80	61	4400	5300
85	48	3100	3900	85	48	2400	3200	85	60		3900	85	58	3700	4500
90	44	2500	3200	90	44	-	2500	90	58	3300	3700	90	56	3200	3000
100	35	-	2100	100	52	2200	2800	100	50	1900	2700	100	50	-	1900
110	46	-	1800	110	46	-	1800	110	46	-	1800	110	56	-	2100

CHART 11

LOAD RATINGS IN POUNDS FOR 30° OFFSET WITH OUTRIGGERS EXTENDED															
LATTICE EXTENSION WITH PINNED SECTION RETRACTED						LATTICE EXTENSION WITH PINNED SECTION EXTENDED									
OPERATING RADIUS IN FEET	35 FT.		35 FT. TELESCOPIC		60 FT. TELESCOPIC		OPERATING RADIUS IN FEET	35 FT.		35 FT. TELESCOPIC		OPERATING RADIUS IN FEET	60 FT. TELESCOPIC		
	FOR ALL BOOM LENGTHS 69 TO 119.6 FT.		FOR ALL BOOM LENGTHS 69 TO 119.6 FT.		FOR ALL BOOM LENGTHS 94 TO 144.6 FT.			FOR ALL BOOM LENGTHS 94.3 TO 145 FT.		FOR ALL BOOM LENGTHS 94.3 TO 145 FT.			FOR ALL BOOM LENGTHS 119.3 TO 170 FT.		
FOR 119.6 FOOT BOOM ONLY	LOADED BOOM ANGLE	RATED LOAD IN POUNDS		LOADED BOOM ANGLE	RATED LOAD IN POUNDS		FOR 145 FOOT BOOM ONLY	LOADED BOOM ANGLE	RATED LOAD IN POUNDS		FOR 145 FOOT BOOM ONLY	LOADED BOOM ANGLE	RATED LOAD IN POUNDS		
	△	SIDE	REAR	△	SIDE	REAR		△	SIDE	REAR		△	SIDE	REAR	
35				35			35				35				
40	78		8900	40	78		8300	40				40			
45	75		8500	45	75		7900	45				45			
50	72		8200	50	72		7600	50	77		8100	50	77		7400
55	70		8000	55	70		7400	55	75		7600	55	75		6900
60	67		7700	60	67		7100	60	73		7100	60	73		6400
65	64		7500	65	64		6900	65	71		6600	65	71		5900
70	61	6300	7200	70	61	5600	6500	70	68		6200	70	68		5500
75	57	5200	6100	75	57	4500	5300	75	66	5800	5900	75	66	5000	5200
80	54	4300	5100	80	54	3500	4400	80	63	4900	5600	80	63	4100	4900
85	50	3400	4200	85	50	2700	3500	85	61	4100	4800	85	61	3300	4100
90	46	2700	3500	90	46	2000	2700	90	58	3400	4100	90	58	2600	3300
100	36	-	2200	100	56	2600	3200	100	52	2200	2900	100	52	-	2100
110	49	-	2200	110	49	-	2200	110	45	-	1900	110	59	1900	2500

- NOTES: 1. SEE MAIN LOAD RATING CHART ON OUTRIGGERS FOR WARNINGS, DEFINITIONS, INFORMATION AND REEVING.
 2. FOR BUCKET RATINGS ON 60 FT. EXTENSION, DEDUCT 20% FROM LOAD RATINGS.
 3. STABILITY RATINGS DO NOT EXCEED 85% OF TIPPING LOADS.
 4. WHEN BOOM IS NOT FULLY EXTENDED USE ONLY BOOM ANGLES, NOT OPERATING RADIUS TO DETERMINE LOAD RATING.
 5. FOR BOOM ANGLES NOT SHOWN, USE RATING OF NEXT LOWER BOOM ANGLE.
 6. 8000 LB. COUNTERWEIGHT WITH 7525 LB. WEIGHT REMOVED.

WARNINGS:

A TIPPING CONDITION WILL OCCUR (WITH OR WITHOUT A HOOK BLOCK) WITH 35 FT. OR 60 FT. BOOM EXTENSION ERECTED, IF MAXIMUM OPERATING RADIUS SHOWN WITH LOAD RATING RESPECTIVE OPERATING CONFIGURATION IS EXCEEDED

dzwigi24.pl

On Rubber Ratings

With 8000 lbs. Counterweight

8000 lbs Counterweight
with 7525 lb. Insert Removed

**CHART
12**

LOAD RATINGS IN POUNDS					
OPERATING RADIUS F.T.	11.00 X 20-14 PR TIRES 12.00 X 20-16 PR TIRES				OPERATING RADIUS F.T.
	STATIONARY		TRAVEL RATINGS OVER REAR		
	OVER REAR	OVER SIDE	CREEP	2.5 MPH	
10	35200	25900	35200	28600	10
12	30500	22000	30500	25500	12
15	26100	15200	26100	22300	15
20	20900	8700	20900	17700	20
25	14800	5200	14800	14400	25
30	10700	3000			30
35	7900				35
40	5900				40
45	4300				45
50	3100				50

**CHART
13**

LOAD RATINGS IN POUNDS					
OPERATING RADIUS F.T.	11.00 X 20-14 PR TIRES 12.00 X 20-16 PR TIRES				OPERATING RADIUS F.T.
	STATIONARY		TRAVEL RATINGS OVER REAR		
	OVER REAR	OVER SIDE	CREEP	2.5 MPH	
10	31200	20300	31200	26700	10
12	27200	14100	27200	23100	12
15	23500	8800	23500	19800	15
20	16500	4200	16500	15700	20
25	11100	1800	11100	11100	25
30	7700				30
35	5400				35
40	3700				40
45	2400				45
50	1400				50

**CHART
14**

DEDUCTIONS TO BE MADE FROM LOAD RATINGS IN POUNDS				
DESCRIPTION	HOOK BLOCK ON POWERED BOOM POINT			
	8.5-20 TON	45-50 TON	8.5-20 TON WITH AUX. SHEAVE	45-50 TON WITH AUX. SHEAVE
HOOK BLOCK WEIGHT	580	950	740	1100
STOWED LATTICE EXT.	35 FT. BOOM EXTENSION	900	1300	1450
	60 FT. TELESCOPIC BOOM EXTENSION	1100	1450	1250

**NOTE: LOAD DEDUCTIONS APPLY ONLY TO
P&H SUPPLIED EQUIPMENT.**

WARNINGS:

1. CRANE LOAD RATINGS WITHOUT OUTRIGGERS DEPENDS ON TIRE CAPACITY AND CONDITION OF TIRES INFLATED PER TABLE.
2. WHEN TRANSPORTING A LOAD, MACHINE MUST BE ON FIRM, LEVEL SURFACE WITH MECHANICAL HOUSELOCK ENGAGED. THE LOAD MUST BE CENTERED OVER REAR OF MACHINE AND RESTRAINED FROM SWINGING. SEE AREAS OF OPERATION PLATE FOR WORKING RANGES.
3. LIFT LOADS WITH MINIMUM BOOM LENGTH; DO NOT EXCEED 65 FEET BOOM LENGTH WHEN LIFTING ON TIRES.
4. DO NOT ATTEMPT LIFTS ON TIRES WITH EXTENSION ERECTED.
5. MAXIMUM RECOMMENDED BOOM ANGLE ON TIRES IS 66° WITHOUT LOAD.

INFORMATION:

1. DEDUCTIONS MUST BE MADE FROM RATED LOADS FOR STOWED LATTICES EXTENSION, OPTIONAL ATTACHMENTS, HOOKS AND HOOKBLOCKS. (SEE DEDUCTION CHART). WEIGHTS OF SLINGS, AND ALL OTHER LOAD HANDLING DEVICES SHALL BE CONSIDERED A PART OF THE LOAD.
2. RATINGS ABOVE THE HEAVY LINE ARE BASED ON STRUCTURAL COMPETENCE AND NOT ON MACHINE STABILITY.
3. IT IS RECOMMENDED THAT OUTRIGGERS BE EXTENDED AS FAR AS POSSIBLE AND CLEAR OF GROUND WHEN LIFTING ON TIRES.
4. STABILITY RATINGS DO NOT EXCEED 75% OF TIPPING LOADS.

DEFINITIONS:

1. CREEP IS MOTION FOR LESS THAN 200 FT. IN A 30 MINUTE PERIOD AND NOT EXCEEDING 1 M.P.H.

NOTES:

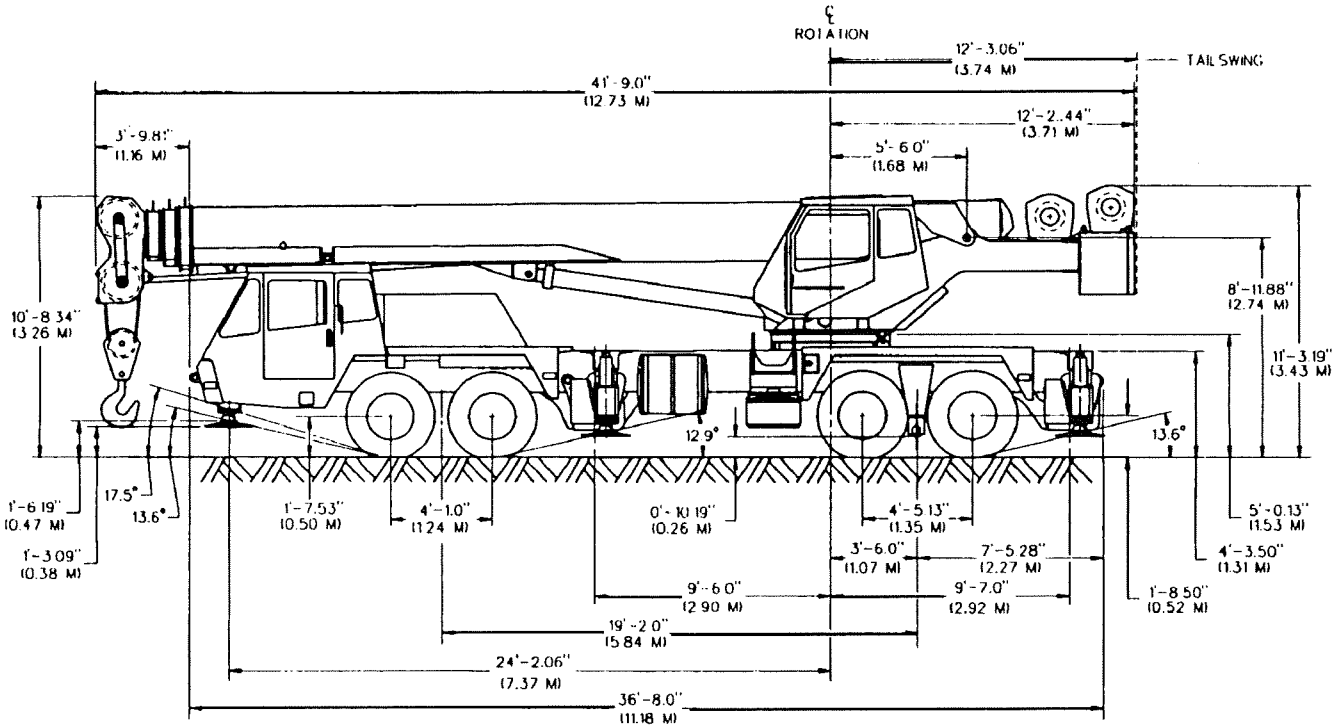
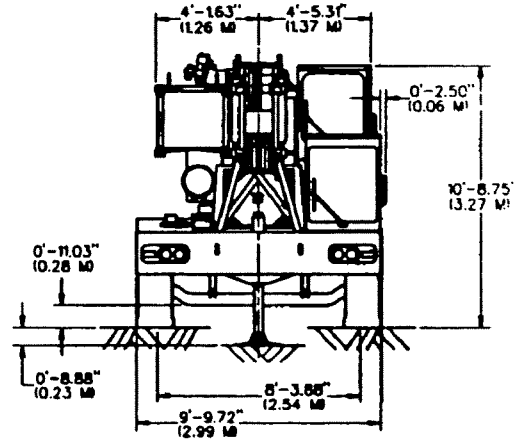
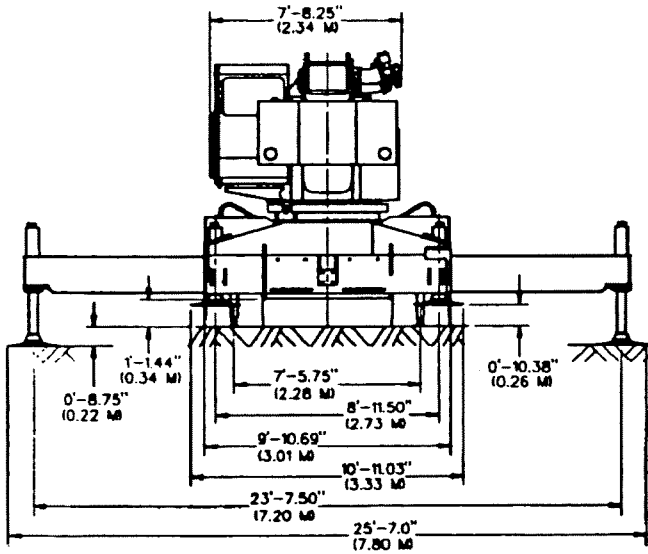
OPERATION OF THIS EQUIPMENT IN EXCESS OF RATED LOADS AND DISREGARD OF INSTRUCTIONS IS AN UNSAFE PRACTICE AND WILL RESULT IN DENIAL OF WARRANTY CLAIMS.

**CHART
15**

TIRE INFLATION			
SIZE	STATIC PSI	CREEP PSI	2.5 MPH PSI
11.00X20-14 PR	110	110	110
12.00X20-16 PR	115	115	115
15.0RX22.5-18PR	130	130	130
16.5RX22.0-18PR	125	125	125

Dimensions

NOTE:
 DIMENSIONS ARE WITH STANDARD FRONT TIRE SIZE: 15:00 R 22.5
 AND STANDARD REAR TIRE SIZE: 11:00 X 20
 WITH OPTION 16:50 R 22.5 FRONT TIRES - ADD 0.87" (22MM) TO HEIGHT DIMENSIONS
 WITH OPTION 12:00 X 20 REAR TIRES - ADD 0.67" (17MM) TO HEIGHT DIMENSIONS



TIRES

	15:00 x 22.5	16:50 x 22.5
VEHICLE TURNING DIAMETER - TIRE CLEARANCE	85.86 FT. (26.17 M)	93.63 FT. (28.54 M)
VEHICLE CLEARANCE DIA. - TIRE CLEARANCE WITH CURB	87.11 FT. (26.55 M)	94.98 FT. (28.94 M)
CARRIER CLEARANCE	95.82 FT. (29.14 M)	102.80 FT. (31.33 M)
BOOM CLEARANCE	94.43 FT. (28.78 M)	100.93 FT. (30.78 M)
EXTENSION CLEARANCE	96.43 FT. (30.00 M)	105.28 FT. (32.09 M)



NOTE: All designs, specifications and components of the equipment described above are subject to change at the manufacturer's sole discretion at any time and without advance notice. Data published herein is informational in nature and shall not be construed to warrant suitability of the machine for any particular purpose as performance may vary with conditions encountered. The only warranty applicable is our standard warranty for this machine.

Address Inquiries to:

dzwigi24.pl



P.O. Box 260002
 Conway, SC 29526-2602
 USA