

C 330

TELESCOPIC TRUCK CRANE 6 × 4 or 6 × 6

UPPERSTRUCTURE

Boom and telescoping

- 3 section standard boom consisting of a basic boom (8.60 m) and 2 hydraulically powered sections (19.60 m).
- Automatic synchronisation through a positive mechanical system and a single control lever — Double acting telescoping ram — No hoses inside the boom — Sections are longitudinally and laterally guided by bearing mounted rollers (life time greased).
- Continuous telescoping stroke : 11 m.
- Telescoping capacity (out or in) : 15,5 T
- 2 speed ranges : 42 s and 29 s
- Optional : 5,5 m mechanical extension (25.10 m boom) — 8.50 m lattice extension folded along the boom foot 4.70 m Fly jib (0° and 20°) folded under the extension.

Derricking system

- Single, double acting ram — Negative boom angle for easy reeving and servicing of boom head — Boom angles max : +81° — mini : -3°5
- max speed : 21 s (from -3°5 to +81°).

Main Winch and auxiliary winch

- P.P.M. type winch with high pressure hydraulic motor and single reduction gear — Grooved drum and cable press device standard — Safe braking system : spring applied, hydraulically released, multi-plate disc type — Non return sprag clutch.

	Main	Auxiliary
Motor Reductor	54,8 cc 1 : 25,5	54,8 cc 1 : 25,5
Max. line pull (1st layer)	4,6 T	4,2 T
Speeds (4th layer) (m/mn)	0- 93 0-135	0- 93 0-135
∅ rope/length	15 mm/155 m	15 mm/150 m
Drum diameter	330 mm	330 mm

Slewing

- By hydraulic motor through reduction gear and electromagnetic brake release — Cross roller slewing ring with external gear teeth mounted and bolted on machined surface — Transport lock, pneumatically operated from the cab.
- Slewing speed : 0 - 2,1 r.p.m.

Operator's cab

- Full all round vision type with removable front windshield, sliding side window, electric windscreen wiper and washer, cab interior light, working light, three-way adjustable seat, independent cab heater, electric horn.

Cab controls and instrumentation

- Front panel with electric warning lights and controls for engine, cab heater, windscreen wiper and washer, lighter.
- Crane controls through 4 short levers and 2 interconnected pedals for independent or simultaneous operation of crane functions — Hoisting, derricking and telescoping controls are fitted with electric switches to provide 2 speed ranges.

CHASSIS AND TRANSMISSION

Chassis

Specific P.P.M. chassis. Designed and built for truck crane duty. Unitary welded torsion box construction with integral outrigger housing — Fitted with rigid and removable decking plates (with non slip protection) — Towing bracket with pin on front and rear — Lateral tool box — Stowable ladders to assist access to upperstructure cab.

Outriggers

Independent type with 4 horizontal beams — 4 vertical jacks mounted upside down with fixed rods protected by sleeves and fitted with bolt-on lock valves—Long vertical stroke (650 mm) — Removal and stowable pads — Direct controls located at the rear of the chassis in lockable housing—Sight levelling bubble indicator — Partial extension facility.

NOTE : P.P.M. reserves the right to modify the above specifications which are given as a guide only. (Figures in accordance with metric system.)

Engine

- Diesel DEUTZ BF 6L 413 FR turbo charged — 240 CV DIN (177 Kw) at 2 300 r.p.m.
- Dry type air filter with electric warning light — Fuel tank capacity : 350 l.

Transmission

- Drive : 6 × 4 or 6 × 6 (option).
- Clutch : Single dry plate — Servo assisted.
- Gearbox : ZF synchromeshed 6 speeds type fitted with air operated overdrive device to provide intermediate gears — Single lever control with integral air switch to operate 12 forward and 2 reverse speeds.
- Transfer box : 2 speed ranges (off or on road) — Automatic front axle connection on low range (6 × 6 option).

Front and rear axles- Suspension

- Front : 1 steering axles (6 × 4 version) or 1 steering drive axle (6 × 6).
- Leaf type spring suspension with hydraulic shock absorbers.
- Rear : Tandem axles with double planetary reduction gear in the hubs — Interaxle and interwheel differential locks — Leaf type spring suspension.

Steering

- Power steering unit with rack and pinion — Emergency steering pump flanged on transfer box.

Brakes

- Service brakes (foot operated) acting on all wheels through dual air system
- Emergency and parking brake on rear wheels, spring applied, air released, operated exhaust brake. Optional : electric retarder (TELMA).

Wheels and tyres

- 10 identical tyres and wheels.
- Front : single 1 200 × 20 -rear : twin 1 200 × 20.
- Stand¹ spare wheel (on chassis) with fast handling device.

Cab and Instrumentation

- Full width three man cab, flexibly mounted in front of engine with 2 lockable doors
- Full vision, large window surface (2 m²) 4 way adjustable driver's seat
- Complete equipment including 2 rear view mirrors, sun visor, twin heater/delroster, separate ventilation, electric windshield washer and wipers, cab interior light, electric horn — Instrument panel with full road instrumentation and warning lights, ashtray, lighter, radio-cassette player and lockable glove compartment — Lined interior finish with sound absorbing and heat insulating material on doors, roof and floor.

CIRCUITS

Hydraulic

- Two main pumps with power take-off mounted on transfer box (4 × 48 l/min) + (2 × 44 l/min).
- One separate steering pump directly flanged on the engine (24 l/mn).
- One emergency steering pump driven from transfer box.
- Separated selector blocks and independent feeding flows for combined or individual crane motions.
- Oil tank capacity : 250 l with centralized filters and sight level gauge.

Electric

24 volts equipment — Two 12 volts batteries (160 Ah) each and alternator with integral electronic regulator — Specific wiring for chassis and upperstructure with separate and pre-wired modules connection boxes and instrument panels — Multicore cables with plug-in connections and simple identification with number guide marks — Fuses grouped in 2 locations (chassis and turret cabs) — Complete road and working equipment including back up, lights high intensity fog and hazard lights.

Air circuit

Single cylinder air compressor (293 cm³) — Air regulator, anti-freeze device, automatic dryer. Separate air tanks for brakes and general service (3 × 30 l) + (1 × 10 L).

SAFETY DEVICES

- Braking, steering and electrical roading circuits EEC approved.
- Safety lock valves bolted on all load bearing cylinders (derricking, telescoping, vertical outriggers).
- Hydraulic speed limiter on all load lowering motions (hoisting, derricking, telescoping).
- Block to block limit switch.
- Boom length and boom angle indicator.
- Mechanical lock of the upperstructure — Power operated.
- Emergency steering pump.

dzwigi24.pl



C 330

- Capacité maximum à 3 m/360° :
- Maximum capacity at 3 m/360° :
- Capacidad maxima a 3 m/360° :
- Maximale Hubkraft bei 3 m/360° :

Tonnes métriques		US tons
30	32	35
75 %	85 %	85 %

CARACTÉRISTIQUES PRINCIPALES

Pour le levage :

- Courbe sur 360° en continu sans béquille frontale.
- Hauteur maxi sous fléchette : 41 m.
- Flèche entièrement hydraulique à synchronisation automatique de 8,60 m à 19,60 m.
- Capacité de télescopage maxi : 15,5 T en rentrée et en sortie.
- Circuit hydraulique à 2 plages de vitesse et simultanéité de mouvements.

Pour la route et le chantier :

- Porteur spécifique P.P.M. de type 6 × 4 ou 6 × 6.
- Vitesse de déplacement : 80 km/h.
- Cabine grand confort à 3 places.
- Boîte 6 vitesses synchronisées avec doubleur de gamme.
- Stabilisateurs indépendants à longue course de calage.
- Moteur DEUTZ turbo chargé — 240 CV DIN.

MAIN CHARACTERISTICS

dzwigi24.pl

High Lifting performances

- Full 360° lifting duties without additional front jack.
- Maximum boom and jib tip height : 41 m.
- Fully synchronised and powered boom up to 19,60 m.
- Maximum boom telescoping capacity : 15,5 T out or in.
- Two speeds hydraulic circuit — Simultaneous motions.

High mobility on and off road

- Specific P.P.M. carrier with 6 × 4 or 6 × 6 drive. Rear differential locks.
- Turbocharged DEUTZ engine — 240 HP (DIN).
- Maximum road speed : 80 Km/h.
- 12 forward speeds through synchromesh gear box and over-drive device.
- Full width three-man cab.

ALLGEMEINE DATSEN

Für das Heben

- Lastentabelle über 360° ohne zusätzliche Abstützung unter Fahrerkabine.
- Max. Rollenhöhe mit Spitzenausleger : 41 m.
- Ausleger stufenlos, synchron hydraulisch teleskopierbar von 8,6 m bis 19,6 m.
- Teleskopierung unter Last : 15,5 T ein und aus.
- Hydraulischen Kreislauf mit 2 Geschwindigkeiten und gleichzeitige Bewegungen.

Für das Fahren

- PPM-Kranträger 6 × 4 oder 6 × 6.
- Fahrgeschwindigkeit : 80 Km/St.
- Komfortkabine mit 3 Plätze.
- Synchronisiertes 6 — Ganggetriebe mit Zwischengetriebe.
- Unabhängige Abstützungen mit grossem Niveau-ausgleich.
- DEUTZ Turbolader — 240 PS DIN.

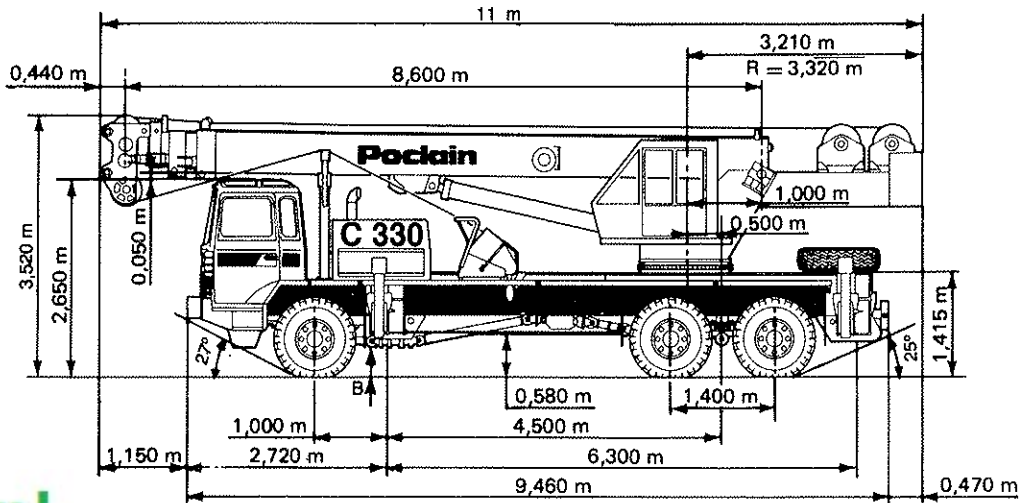
CARACTERISTICAS PRINCIPALES

Elevacion de cargas

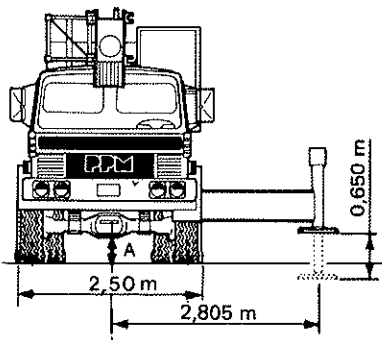
- Diagrama de cargas sobre 360° en continuo sin estabilizador delantero adicional.
- Altura maxima bajo plumín : 41 m.
- Pluma totalmente hidraulica con sincronización automatica de 8,60 m a 19,6 m.
- Capacidad maxima de telescopado en carga : 15,5 T (salida y entrada).
- Circuito hidraulico consiguiendo simultaneidad de movimientos.
- 2 gamas de velocidades.

Carretera y obra

- Camion especifico P.P.M. de tipo 6 × 4 ó 6 × 6.
- Velocidad de desplazamiento : 80 Km/h.
- Cabina de gran confort con 3 asientos.
- Caja de 6 velocidades sincronizadas y 6 multiplicadas.
- Estabilizadores independientes, de gran extension.
- Motor Deutz con Turbo — 240 CV (DIN).



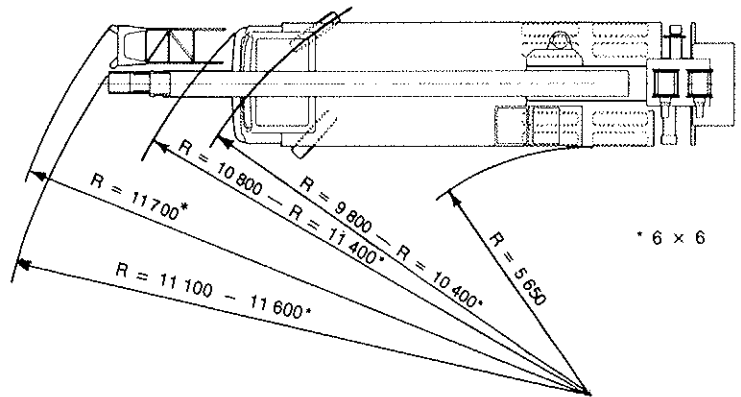
dzwigi24.pl



	A (mm)	B (mm)
Avant-Front Vorne-Delante	450 (6 × 4) 382 (6 × 6)	505
Arrière-Rear Hinten-Attras	373	505

- 1 • Freinage, direction et éclairage de signalisation routière agréés CEE.
- 2 • Braking, steering and electrical roading circuits EEC approved.
- 3 • Bremsen, Lenken und Beleuchtung nach EWG-Vorschriften.
- 4 • Circuitos de frenado, dirección y de luces conformes con las normas CEE.

	machine de base Basic machine Grundgerät maquina base	toutes options completely equipped mitzusatzrüstung maquina base
Avant Front Vorne Delante	7 000	8 400
Arrière Rear Hinten Attras	17 800	18 700
Total Total Gesamt Total	24 800	27 100 *

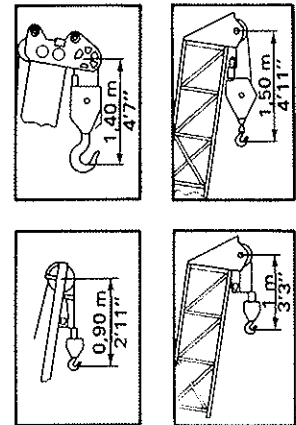
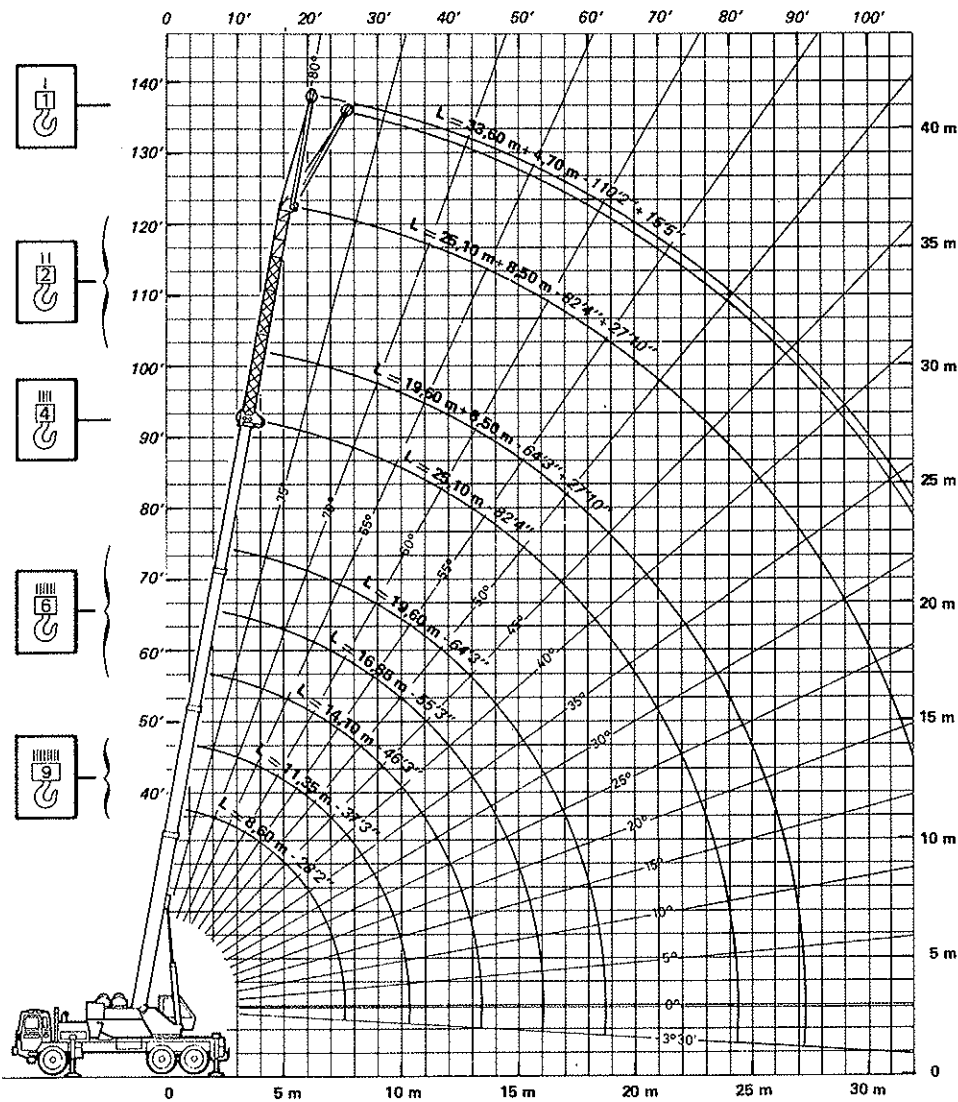


* Versions France 25 TS et 26 T : nous consulter

OPTIONS	OPTIONAL	AUF WUNSCH	OPCIONES
<ul style="list-style-type: none"> • Version 6 × 6. • Ralentisseur électro-magnétique TELMA. • Allonge mécanique télescopique de 5,50 m. • Extension treillis de 8,50 m. • Fléchette de 4,70 m à 2 positions (0° et 20°). • Treuil auxiliaire (identique au principal). • Contrôleur d'Etat de charge. • Limiteur de fin de course basse. • Options climatiques. • Adaptations diverses (nous consulter). 	<ul style="list-style-type: none"> • 6 × 6 drive. • Electric retarder (TELMA). • Mechanical extension 5,50 m. • Lattice extension (8,50 m). • Fly jib (4,70 m) — 2 off set (0° and 20°). • Auxiliary winch. • Safe load indicator with motion cut out. • Lower stroke hook limiter. • Climatic adaptation. • Special adaptations to customer requirements. 	<ul style="list-style-type: none"> • Antrieb 6 × 6. • Wirbelstrombremse TELMA. • Gittermastverlängerung. • Spitzenausleger (4,70 m) mit 2 Aufbauwinkeln (0°, 20°). • 2. Winde. • Lastmomentbegrenzer. • Senkbegrenzung des Windes. • Zusatzausrüstung für Klimabedingungen. • Sonderaufbauten. 	<ul style="list-style-type: none"> • Transmision 6 × 6. • Ralentizador eléctrico TELMA. • Alargadera mecánica de 5,5 m. • Alargadera de celosía de 8,5 m. • Plumín de 4,7 m (0° y 20°). • Cabrestante auxiliar. • Dispositivo de control de estado de carga. • Limitador de fin de carrera baja. • Opciones climáticas. • Adaptaciones varias (consultar).

TONNES MÉTRIQUES

dzwigi24.pl



NOTES

- 1 - Les charges indiquées en tonnes métriques dans les tableaux sont les maximales couvertes par la garantie du constructeur. Le poids des crochets, des accessoires de levage et des équipements montés en tête de flèche principale (extension, fléchette) sont à déduire des charges indiquées.
- 2 - Les charges indiquées au-dessus du trait gras sont fonction de la résistance de certains organes et non de la stabilité. Les charges en-dessous du trait gras ne dépassent en aucun cas 75 % de la charge de basculement.
- 3 - **Extension et fléchette** : en cas d'utilisation avec une fêche non télescopée intégralement ce n'est pas la portée qui détermine la capacité de levage, mais l'angle d'inclinaison de la flèche. Les charges indiquées dans le tableau sont donc valables pour un angle donné quelle que soit la longueur de la flèche.
- 4 - **Déductions de charges** :
 - Extension treillis : 850 Kg.
 - Extension + fléchette : 1100 Kg.
 - Fléchette/extension : 250 Kg.
 - Crochets et moufles (voir ci-dessous).

● hauteurs, portées et longueurs en mètres et en feet et à vide.

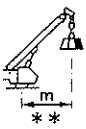
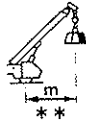
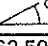

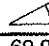

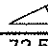

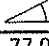

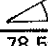

Effort pratique maxi. autorisé en tonnes (Au brin simple)	TREUILS	
	Principal	Auxiliaire
Dernière couche	3,35	3
1 ^{ère} couche	4,2	3,8

	Poids en Kg.
4 poulies	330
2 poulies	140
Crochet boule	40

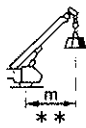
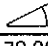

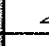


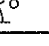

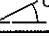

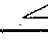
NOTA : P.P.M. se réserve le droit si nécessaire de modifier le matériel par rapport aux renseignements donnés ici à titre indicatif.

TONNES MÉTRIQUES

CHARGES SUR STABILISATEURS EN EXTENSION TOTALE SUR 360°

FLECHE PRINCIPALE = 19,60 m											
	• ROUGE		• BLANC		• VERT		• JAUNE		• NOIR		
	8,60 m		11,35 m		14,10 m		16,85 m		19,60 m		
											
3	62,50	30,00	69,00	15,50	72,50	15,50	77,00	15,50	78,50	10,50	3
3,5	59,00	24,85	66,50	15,50	71,00	15,50	75,50	15,50	77,50	10,50	3,5
4	55,50	22,40	64,00	15,50	69,00	15,50	74,00	15,50	76,00	10,50	4
4,5	51,00	20,45	61,50	15,50	67,00	15,50	72,00	15,00	75,00	10,50	4,5
5	47,00	18,75	59,00	15,50	65,00	15,50	70,50	14,40	73,50	10,45	5
6	35,00	14,35	52,50	14,50	61,00	14,40	66,50	13,00	70,50	9,50	6
7	20,00	10,55	45,50	10,75	56,50	10,75	62,50	10,85	67,50	8,65	7
8			38,00	8,30	51,50	8,45	58,50	8,35	64,00	7,85	8
9			28,00	6,50	45,50	6,85	54,00	6,75	60,50	6,85	9
10					39,00	5,75	50,00	5,85	57,00	5,95	10
11					31,50	4,95	46,00	5,05	53,00	5,10	11
12					24,00	4,25	40,00	4,35	49,00	4,35	12
13							34,00	3,65	45,00	3,65	13
14							27,00	3,05	40,50	3,05	14
15							19,50	2,50	36,00	2,60	15
16									30,50	2,25	16
17									24,50	1,95	17
18									18,50	1,75	18

CHARGES SUR STABILISATEURS EN EXTENSION TOTALE SUR 360°

ALLONGE – EXTENSION TREILLIS – FLECHETTE											
ALLONGE	FLECHE = 19,60 m + EXT. TREILLIS = 8,5 m		FLECHE = 25,10 m + EXT. TREILLIS = 8,5 m		FLECHE = 33,60 m + FLECHETTE = 4,70 m						
	25,10 m		28,10 m		33,60 m		0°			20°	
											
79,00	7,75										4,5
78,00	7,50	79,50	5,15								5
75,50	7,00	77,50	4,85	80,00	2,95						6
73,50	6,50	75,50	4,50	78,50	2,80						7
71,00	6,10	73,00	4,20	76,50	2,70	79,00	2,10				8
68,50	5,70	71,00	3,95	75,00	2,60	77,50	2,00	79,00	1,60		9
66,00	5,40	69,00	3,70	73,50	2,50	76,00	1,90	77,50	1,55		10
63,50	4,95	66,50	3,50	71,50	2,40	74,50	1,80	76,00	1,45		11
60,50	4,40	64,50	3,35	69,50	2,30	73,00	1,75	74,50	1,40		12
58,00	3,85	62,00	3,15	68,00	2,25	71,00	1,65	73,00	1,35		13
55,00	3,40	59,50	3,00	66,00	2,15	69,50	1,55	71,50	1,30		14
52,00	3,00	57,50	2,85	64,50	2,10	68,00	1,45	70,00	1,25		15
49,00	2,60	55,00	2,60	62,50	2,00	66,50	1,40	68,50	1,20		16
45,50	2,30	52,50	2,30	60,50	1,90	64,50	1,30	66,50	1,15		17
42,00	2,05	49,50	2,05	58,50	1,80	63,00	1,25	65,00	1,10		18
38,50	1,80	47,00	1,85	56,50	1,75	61,50	1,20	63,50	1,10		19
34,50	1,60	44,00	1,65	54,00	1,65	59,50	1,10	62,00	1,05		20
30,50	1,40	40,50	1,45	52,00	1,55	58,50	1,05	60,00	1,00		21
25,50	1,25	37,00	1,30	49,50	1,45	56,00	1,00	58,50	0,95		22
17,50	1,10	33,00	1,15	47,00	1,30	54,00	0,95	56,50	0,90		23
		28,50	1,00	44,50	1,15	52,00	0,90	55,00	0,90		24
		23,50	0,90	42,00	1,05	50,00	0,85	53,00	0,85		25
		17,00	0,80	39,00	0,90	48,50	0,80	51,00	0,80		26
				36,00	0,80	46,50	0,75	48,50	0,75		27
				33,00	0,70	44,50	0,75	46,50	0,70		28
				30,00	0,55	42,50	0,65	44,00	0,70		29
						40,00	0,55	41,50	0,60		30
						37,00	0,50	39,00	0,50		31
						34,50	0,45	36,00	0,45		32

** Portées et angles sous charge.
• Couleur de repérage des longueurs sur la flèche.