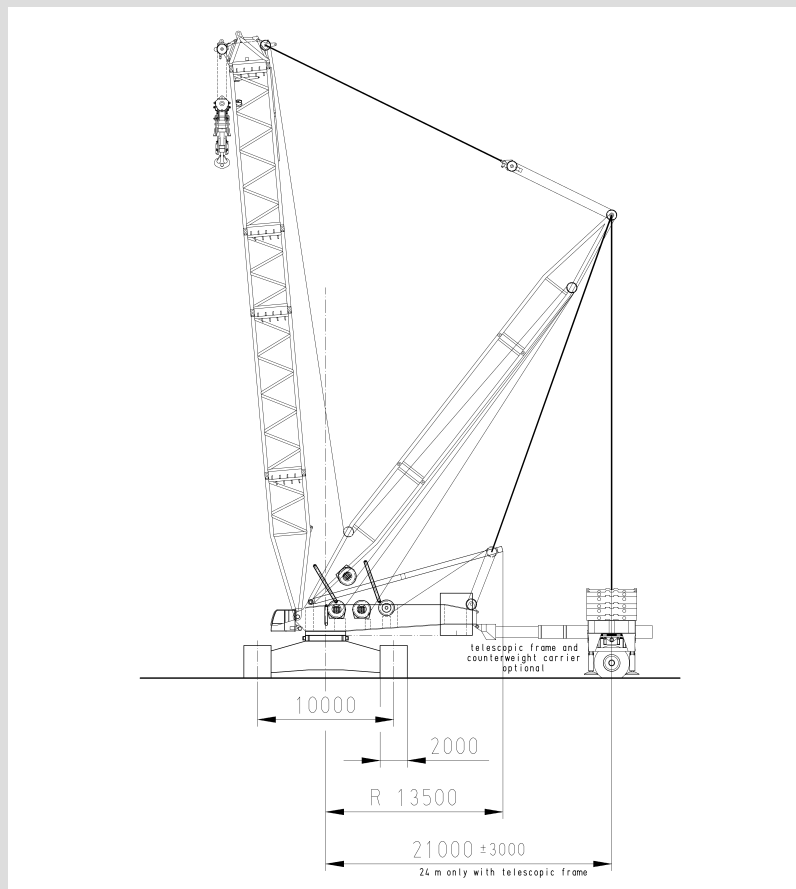


coming soon

CC 5800



1000t



| | | |
|---------------------------------|-----------|--|
| Max. Lifting Capacity | | 1000 t x 6 m (SH), 1000 t x 12 m (SSL) |
| Max. Load Moment | | 6820 tm (SH), 13840 tm (SSL) |
| Boom Length | SH | 24 - 96 m |
| | SH / LH | 42 - 132 m |
| | SSL | 42 - 96 m |
| | SSL / LSL | 102 - 156 m |
| Luffing Fly Jib | SW | 24 - 96 m (main boom up to 72 m) |
| | SWSL | 24 - 96 m (main boom up to 96 m) |
| Fixed Jib | SFVL | 12 m (main boom up to 96 m) |
| Transportation Width | | 3,5 m (boom 3,0 m) |
| Transportation Weight max. | | 45 t |
| Operational Weight | | 450 t (SH 24 m, 170 t cwt) |
| Ground Bearing Pressure | | 1.2 kg/cm ² |
| Engine Power (Daimler-Chrysler) | | 2 x 260 kW |

other new features

- spacious comfortable cabin
- IC-1 control *
- 170 t cwt (optional 250 t + 100 t central ballast)
- superlift optional with telescopic frame (range 18 - 24 m) **

* touchscreen, colour display
with telescopic frame SL-counterweight indefinitely variable 18 m - 24 m
main boom indefinitely variable for SW (85° - 75°) and SWSL (85° - 65°)
** standard superlift only 18 m and 21 m

CC 5800

