



**TEREX CRANES**

PPM

**ATT 1300**



# ATT 1300

## MAIN TECHNICAL CHARACTERISTICS

- **CAPACITY** - 100 tonnes at 3 metres (CE) - 110 tonnes at 3 metres (85%)
- **BOOM** - 45 m
- **HYDRAULICS** - 3 main circuits. Independence of each movement
- **CHASSIS** - 10 x 6 x 6 (on road) - 10 x 6 x 10 (on site)
- **ENGINE** - MERCEDES 435 HP Turbo diesel (carrier)  
MERCEDES 160 HP Turbo diesel (upperstructure)
- **SUSPENSION** - Hydropneumatic suspension with controlled damping and slide slope compensation

## WEIGHT

Counterweight \ Axles	1	2	3	4	5	Total Weight
7,9 t <sup>(1)</sup>	12	12	12	12	12	60
10 t <sup>(1)</sup>	12	12	12	12	12	60
12,3 t <sup>(1)</sup>	12,5	12,5	12,5	12,5	12,5	62,5

<sup>(1)</sup>With extension - <sup>(2)</sup>Without option

## GEARS

gear ratios (Forward/Reverse)	1	2	3	4	5	1	1	2	3	4	5	1
Speed (high range)	9	22	35	51	70	15	10	24	38	55	76	16
Speed (low range)	5	13	20	29	41	9	6	14	22	32	44	9
Gradeability	60 %						54 %					
	14.00 R 25						16.00 R 25					

Lifting	Main winch: maximum linepull (1st layer/last layer)	9.4 / 7.5 tonnes
	Main winch: maximum single linespeed	120 m/mn
	Auxiliary winch: maximum linepull (1st layer/last layer)	9.4 / 7.5 tonnes
	Auxiliary winch: maximum single linespeed	120 m/mn
Derricking	Time to move from - 3° to 80°	40 seconds
Telescoping	Time to extend from 12 metres to 45 metres	120 seconds
Slewing	Speed of movement	0 to 1.8 rpm
Outriggers	Time to extend horizontal beams	40 seconds
	Time to extend vertical jacks	25 seconds

# CARRIER AND POWERTRAIN

- **STRUCTURE**
  - PPM design. Machine welded carrier frame from high-tensile steel.
- **OUTRIGGER OPERATION**
  - Outriggers controlled from each side of the carrier.
  - Horizontal beams extended independently.
  - Lifting capacities with no or partial extension of the outrigger beams.
  - Stabilizer pads permanently in position. Stowed by sliding under the outrigger jack.
- **ENGINE**
  - Mercedes V8 OM 442 LA, turbodiesel. Water cooled. 435 HP at 2,100 rpm (320 KW). Maximum torque : 1,880 N.m at 1,100 rpm. 14.6 litre capacity. Complies with EC anti-pollution directives (91 / 542). Fuel tank capacity : 500 litres.
- **TRANSMISSION**
  - Torque convertor and automatic gearbox with 5 forward and 1 reverse gears.
  - Low range on each ratio increases traction in rough terrain.
  - Automatic lock-up on all gears.
  - Front axles is pneumatically connected.
- **AXLES**
  - Axles 2, 4, 5 are drive axles with planetary hub reduction.
  - Inter-wheels differential can be locked on each drive axle.
  - Inter-axles (4 / 5) differential can be locked.
- **SUSPENSION**
  - PPM HYDROSTABLE hydropneumatic suspension :
    - Shock absorption controlled via integrated valves.
    - Hydraulic anti-rolling stabilizes the crane in bends, around corners, ...
    - Crane maintains its level permanently and mechanically without driver intervention.
    - Slide slope compensation and level adjustment.
    - Suspension can be locked hydraulically.
- **STEERING**
  - Axles 1, 2, 3 are steer axles on road.
  - Axles 4, 5 are steer axles on site.
  - All-wheel steer and crab steer.
  - Power-assisted steering by double steering circuit complying with EC directives.
- **BRAKING**
  - Complying with EC directives.
  - Pneumatic drum double braking circuit on each axle.
  - Emergency brake : spring-loaded on 3 / 4 / 5 axles.
  - Hydraulic retarder flanged behind the torque convertor .
- **TYRES**
  - Ten 14.00 x 25 tyres.
- **CAB**
  - Three-seater cab equipped with all the equipments necessary to allow comfortable and safe travelling. Adjustable mirrors. Tinted windows. Cataphoresis treated cab to prevent rusting. Access by rigid steps fold away in rough terrain.
- **ELECTRIC CIRCUITS**
  - 24 volts. 2 batteries (12 V / 215 Ah).
  - Circuit-breaker protected.
  - Printed circuits in both cabs improve wiring reliability.
  - Cables have marked wires protected by thermoplastic sheaths : can be easily accessed and dismantled.
  - EC approved lighting.
- **PNEUMATIC CIRCUITS**
  - Air scrubber to purify and dry the compressed air.

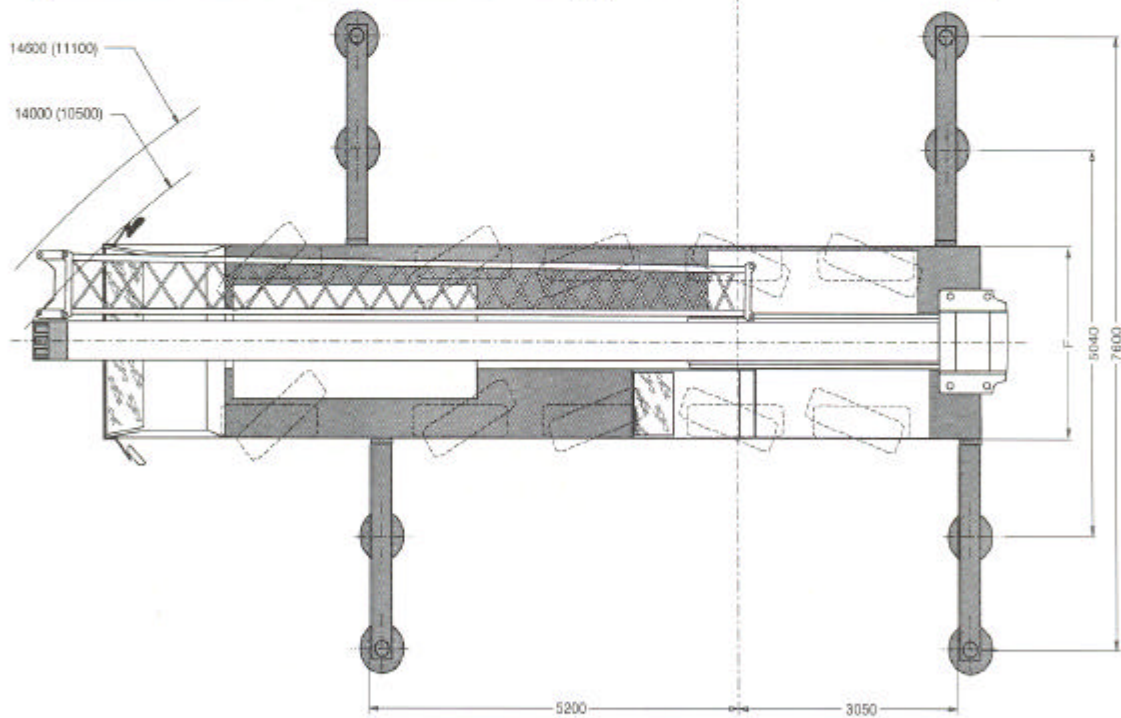
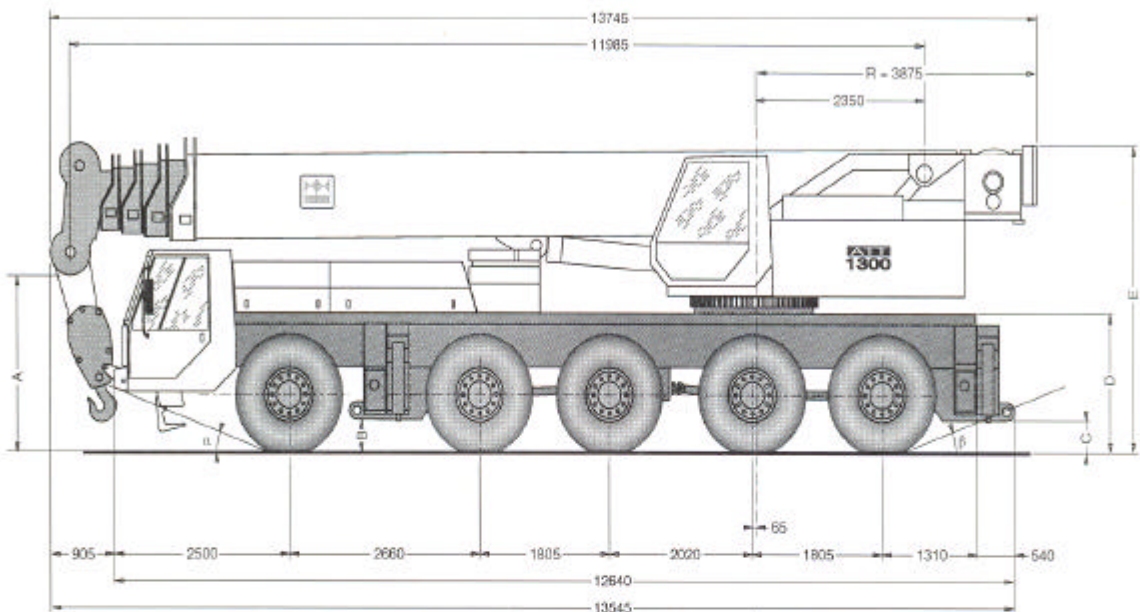
# UPPERSTRUCTURE

- **CONSTRUCTION** - PPM design. Machine welded frame from high-tensile steel. Ball bearing slewing ring with external gear teeth.
- **ENGINE** - Mercedes OM 366 A, 6-cylinder in line turbo diesel. Water cooled. 160 HP at 2,100 rpm (117 KW). Maximum torque : 560 N.m at 1,400 rpm. 5.96 litre capacity. Fuel tank capacity : 200 litres.
- **HYDRAULICS**
  - The hydraulic system guarantees :
    - All movements are completely independent of each other.
    - The speed of the movements is independent from the weight of the load.
    - Precise and progressive start of all the movements.
    - Speed of the movements proportional to the joystick angle.
    - Very gradual movements when the engine is idling.
  - 2 main variable displacement pumps. 1 fixed displacement pump for slewing. 900 litre reservoir. 10  $\mu$  filtering. Hydraulic oil cooler.
- **WINCH** - Axial piston motor. Integrated planetary reducer. Cable diameter : 20 mm. Cable length : 220 metres. 65-tonne standard hookblock.
- **DERRICKING** - 1 double acting ram. Speed of descent controlled by safety valve.
- **SLEWING**
  - PPM designed slewing mechanism :
    - Free rotation of the upperstructure with dynamic foot braking.
    - Precise and progressive start of movement.
    - Very gradual movement when the engine is idling.
  - Hydraulic vane motor with planetary reducer. Dynamic hydraulic disc brake integrated in the reducer.
- **TELESCOPING**
  - 6-section full power telescopic boom.
  - Folded steel sections optimize guiding.
- **CAB**
  - Panoramic cab with full visibility and equipped with all the controls for operating the crane in comfort and safety. Tinted windows. Cataphoresis treated cab.
  - 2 electrical joysticks with automatic return to neutral.
- **SAFETY DEVICES**
  - LMI (Load Moment Indicator) with diagnosis assistance function (affichage à cristaux liquides).
  - Safety valves on telescoping, derricking and stabilizers. Anti two-block device, lower stroke block limiter. Pressure limiters on all hydraulic functions.

## OPTIONS

- Lattice extension : 10.5 metres, can be folded and stored along the right hand side of the boom. Offset angles : 0°, 15°, 27°.
- Double-folding lattice extension : 10.5 metres + 9.5 metres, can be folded and stored along the right hand side of the boom. Offset angles : 0°, 15°, 27°.
- Lattice extension 5 m, 15 m and 25 m.
- 20-tonne, 100-tonne and single line hookblocks.
- Rooster sheave for single line work.
- Tyres : 16.00 R 25, 20.5 R 25.
- Spare wheel.
- 10 x 8 transmission.
- Auxiliary winch.
- Additional counterweight.
- Additional sheave for 16 line reeving.
- Other optional equipments on request.

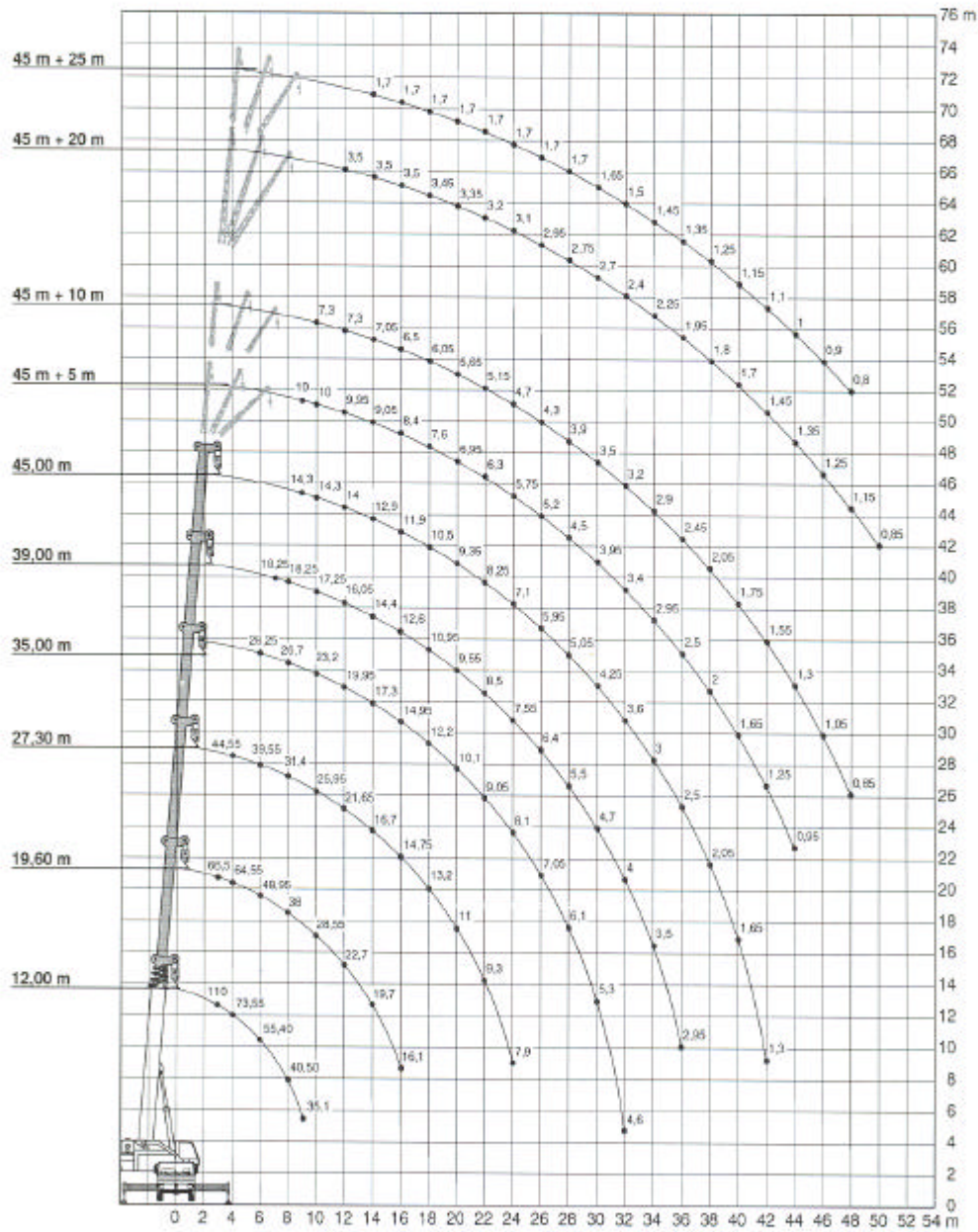
# DIMENSIONS



	A	B	C	D	E	F	$\alpha$	$\beta$
14.00 R 25	2000	430	420	1765	3785	2500	20°	19°
16.00 R 25	2050	480	470	1815	3825	2700	22°	21°

# ATT 1300

Charges, hauteurs et portées  
**85%** Lifting capacities, heights and radius  
 Traglasten / Hubhöhen  
 Cargas, alturas y alcances



Contrepoids max. / Max. counterweight / Max. Gegengewicht / Contrapeso máximo : 16 T.



**TEREX CRANES**

