

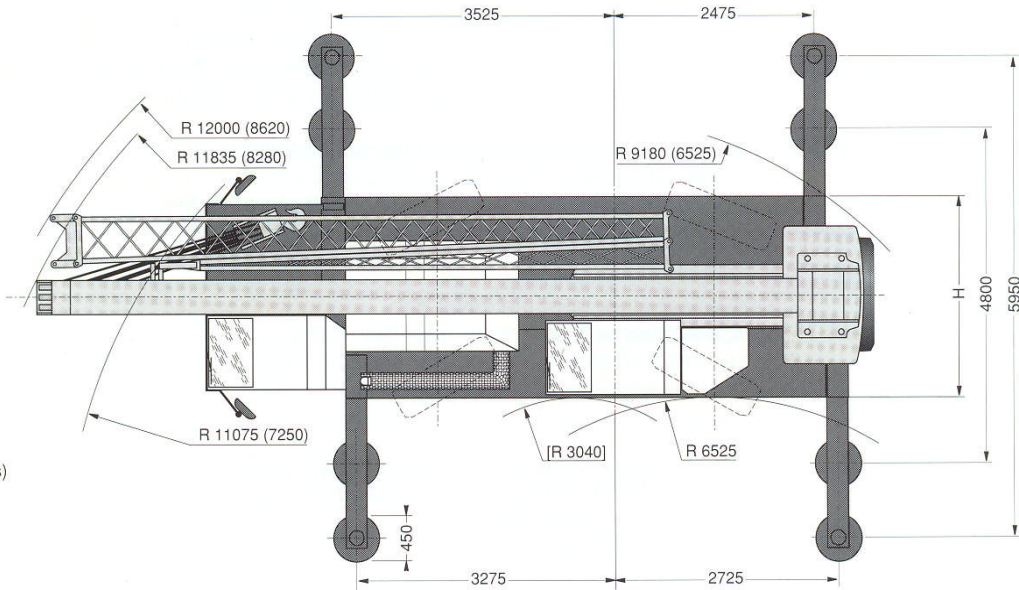
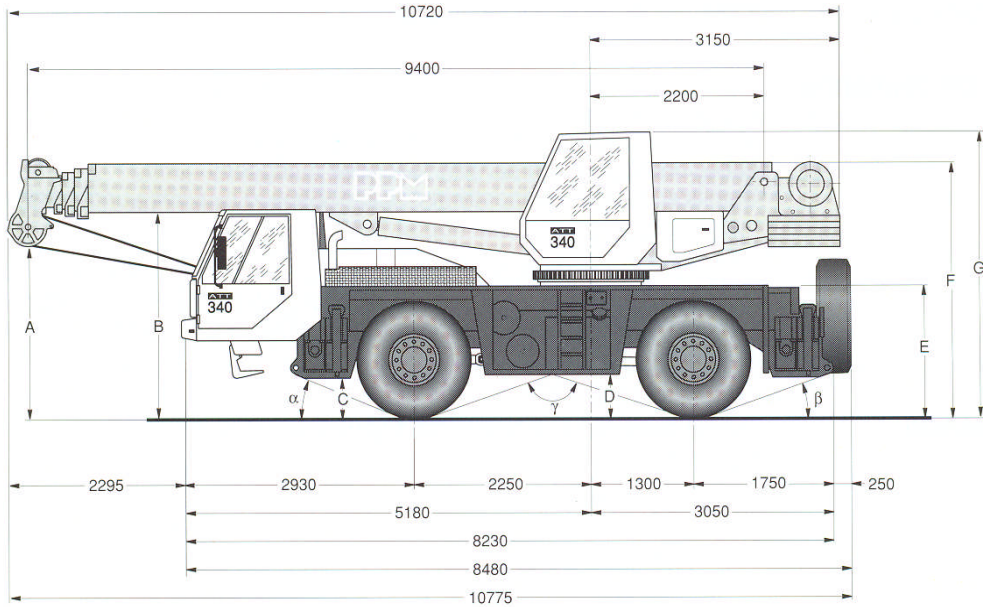
ATT 340



30 tonnes - 30.40 m boom length

PPM

DIMENSIONS



* Four-wheel steer []
(figures between brackets)

	A	B	C	D	E	F	G	G ^(*)	H	α	β	γ
14.00 R 25	2000	2480	420	475	1570	3080	3450	3370	2500	20°	20°	144°
16.00 R 25	2050	2530	470	525	1620	3130	3500	3420	2650	22°	21°	140°

(*) Machine in lowered position



Head quarter and factory :
Z.I. La Saule
71304 MONTCEAU LES MINES CEDEX

Sales department :
136, rue Julian Grimaud
94408 VITRY SUR SEINE Cedex
Tél. (1) 45 73 39 36
Fax (1) 45 73 39 45 - Téléc 261 651



ATT 340

MAIN TECHNICAL CHARACTERISTICS

- **TYPE** - 2-axle all terrain crane
- **TONNAGE** - 30 tonnes over 360° (75%) - 33 tonnes over 360° (85%)
- **BOOM** - Length: 30.4 metres
- **HEIGHT** - 31.60 metres under hook
- 47 metres under hook on double-folding lattice extension (15 metres)
- **HYDRAULICS** - PPM FLOWMATIC: 2nd generation load sensing distribution with independent slewing circuit
- **CHASSIS** - 4 x 4 x 4 from both cabs
- **ENGINE** - MERCEDES 236 HP turbo
- **SUSPENSION** - PPM HYDROSTABLE: self levelling hydropneumatic suspension with controlled damping.

GEARS

Gear ratios (Forward/Reverse)	1	2	3	4	5	6	1	2	3
Road speed (kph)	8	14	19	33	42	73	8	19	42
Gradeability	63 %						63 %		

Lifting	Main winch: maximum linepull (1st layer/4th layer)	4.1 / 3.3 tonnes
	Main winch: maximum single line speed	120 m/mn
	Auxiliary winch: maximum linepull (1st layer/4th layer)	4.1 / 3.3 tonnes
	Auxiliary winch: maximum single line speed	120 m/mn
Derricking	Time to move from -4° to 80°	36 seconds
Telescoping	Time to extend from 9.4 metres to 30.4 metres	55 seconds
Slewing	Speed of movement	0 to 1.8 tr/mn
Outriggers	Time to extend horizontal beams	25 seconds
	Time to extend vertical jacks	35 seconds

WEIGHT

Axle	1	2	Total Weight
Weight ⁽¹⁾	12	11.8	23.8
Weight ⁽²⁾	12.6	12.9	25.5

(1) with 20-tonne hookblock, spare wheel and 3.2-tonne counterweight

(2) with 20-tonne hookblock, spare wheel, 15-metres lattice extension and 10-tonne hookblock, 4-tonne counterweight

CARRIER AND POWERTRAIN

- **CONSTRUCTION** - PPM design. Machine welded carrier frame from high-tensile steel.
- **OUTRIGGER OPERATION** - Outriggers controlled from each side of the carrier and from the upper cab
 - Horizontal beams extended independently
 - Maximum ground clearance of the wheels : 160 mm
 - Lifting capacities with partially extended outriggers
 - Stabilizer pads permanently in position. Stowed by sliding under the outrigger jack.
- **ENGINE** - Mercedes OM 366 LA, 6-cylinder in line turbo diesel with intercooler. Water cooled. 236 HP (174 KW) at 2,500 rpm. Maximum torque: 750 N/m at 1,550 rpm. 5.96 litre capacity. Complies with EC anti-pollution directives (91/542). Fuel tank capacity: 300 litres.
- **TRANSMISSION** - Torque converter and powershift gearbox with 6 forward and 3 reverse gears.
 - Automatic lock-up on all gears.
- **AXLES** - 2 drive/steer axles with planetary hub reduction. Differential lock on each axle.
 - Differential lock from both cabs.
 - 4-wheel drive from both cabs.
- **SUSPENSION** - PPM HYDROSTABLE hydropneumatic suspension :
 - Shock absorption controlled via integrated valves.
 - Hydraulic anti-rolling stabilizes the crane in bends, around corners ...
 - Crane maintains its level permanently and mechanically without driver intervention.
 - In travelling configuration, crane height can be reduced in order to go under certain obstacles.
 - Suspension can be locked hydraulically from both cabs for load handling on wheels. Locking is carried out axle by axle from the lower cab.
- **STEERING** - Rear-wheel steer from the lower cab.
 - All-wheel steer and crab steer from both cabs.
 - Power-assisted steering by double steering circuit complying with EC directives.
 - Hydrostatic steering from the upper cab.
- **BRAKING** - Foot brake : pneumatic drum brakes on both axles.
 - Emergency brake: spring-loaded on the front axle.
 - Parking brake on front axle.
 - All comply with EC directives.
- **TYRES** - Four 14.00 R 25 tyres.
- **CAB** - Single-seater cab equipped with all the components necessary to allow comfortable and safe travelling. De-icing rear-view mirrors. Tinted windows. Cathaphoresis treated cab to prevent rusting. Access by rigid steps which fold away in rough terrain.
- **ELECTRIC CIRCUITS** - 24 volts. 2 batteries (12 V/160 Ah), maintenance free. Circuit-breaker protected.
 - Printed circuits in the driving cab and the upperstructure cab improve wiring reliability.
 - Cables have marked wires protected by thermoplastic sheaths: can be easily accessed and dismantled.
 - EC approved lighting.
- **PNEUMATIC CIRCUITS** - 225 cc compressor with air scrubber to purify and dry the compressed air.

UPPERSTRUCTURE

- **CONSTRUCTION**
 - PPM design. Machine welded frame made from high-tensile steel. Ball bearing slewing ring with external gear teeth.
- **HYDRAULICS**
 - The FLOWMATIC system guarantees:
 - All movements are simultaneous, even when the engine is idling.
 - All movements are independent of each other.
 - The speed of all movements is independent from the weight of the load.
 - Precise and progressive start of all movements.
 - Speed of movements proportional to the joystick angle.
 - All crane movements executed as ordered by the crane operator, even if the total flow requested is greater than that which the pump can provide: in this case, the speed of each movement remains proportional to the demand.
 - 1 main pump with variable displacement, 1 pump with fixed displacement for slewing: pumps driven by thermal engine. 2nd generation Load Sensing regulation. Proportional valve block. 300 litre reservoir. 10 μ filtering. Hydraulic oil cooler.
 - 2 hydraulic joysticks with automatic return to neutral.
- **WINCH**
 - Axial piston motor. Integrated planetary reducer. Cable diameter 15 mm, length 150 metres, resistance 21.000 kilos. 20-tonne hookblock standard.
- **DERRICKING**
 - 1 double acting ram. Speed of descent controlled by safety valve.
- **SLEWING**
 - New PPM-designed slewing mechanism:
 - Free rotation of the upperstructure with dynamic foot braking.
 - Precise and progressive start of movements.
 - Movements more gradual when the engine is idling.
 - Hydraulic vane motor with planetary reducer. Dynamic hydraulic disc brake integrated in the reducer.
- **TELESCOPING**
 - 4-section telescoping boom: full power telescope gives total and continuous synchronization.
 - Boom designed and manufactured by PPM:
 - Made of 4 machine welded high-tensile steel plates into one continuous piece.
 - Resistance/weight ratio optimized by rectangular section and by the use of different thicknesses of steel plate.
 - Boom guided by slide pads. Lateral slide pads can be adjusted from outside the boom.
 - 1 double-acting double-extension cylinder with synchronization of the fourth section by chains.
- **CAB**
 - Panoramic cab with full visibility and equipped with all the controls for travelling and crane operation in comfort and safety. Tinted windows. Cataphoresis treated cab.
- **STOWING**
 - Front right stowage box for hookblocks and sleepers.
 - Rear stowage box for slings.
 - Stowage box for personal belongings behind upper cab.
- **SECURITY DEVICES**
 - LMI (Load Moment Indicator). Alphanumeric LCD readout.
 - Safety valves on telescoping, derricking and stabilizers. Anti two-block device, lower stroke block limiter. Pressure limiters on all hydraulic functions.

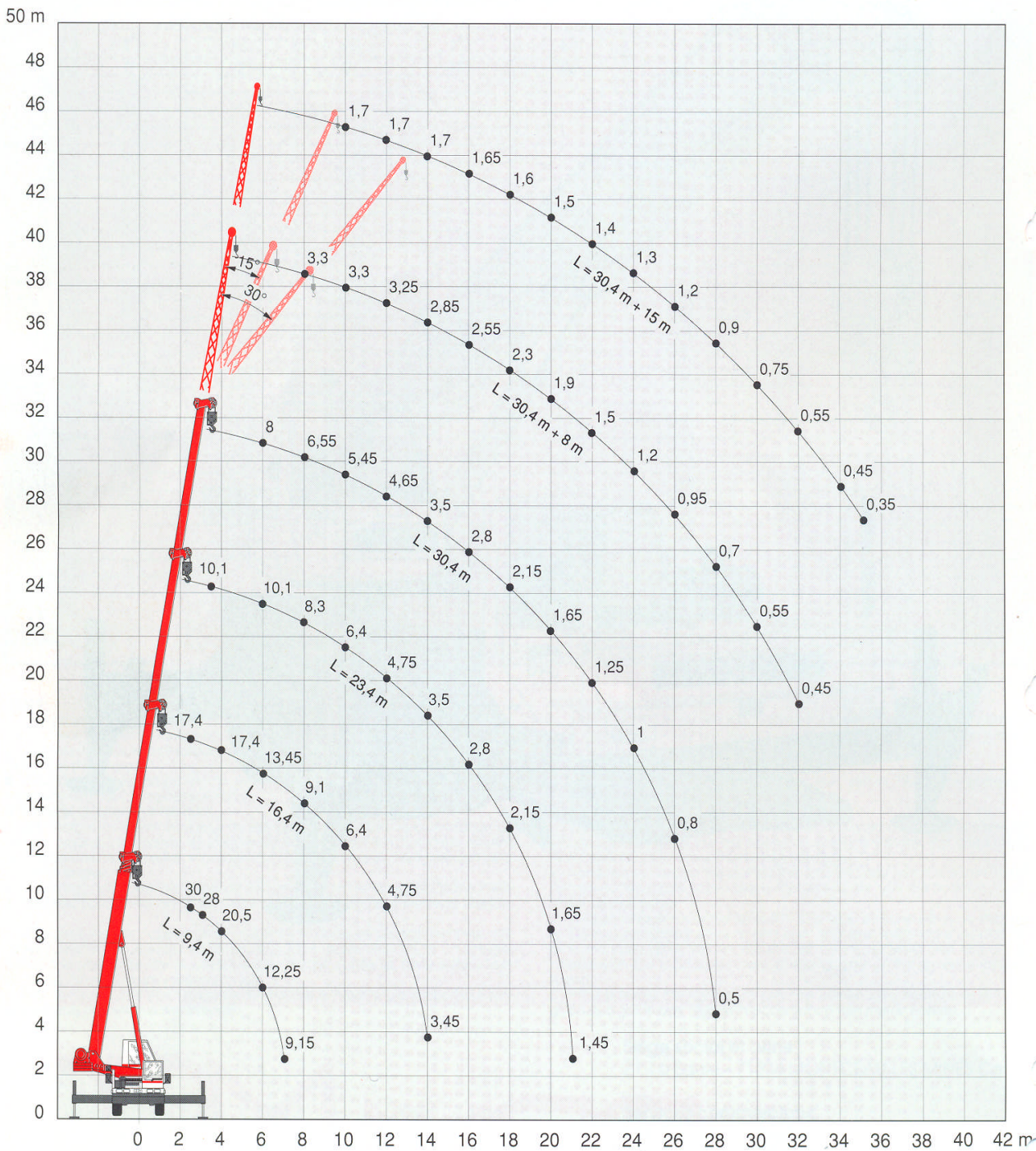
OPTIONS

- Lattice extension: 8 metres, can be folded and stored along the right hand side of the boom. Offset angles: 0°, 15°, 30°.
- Double-folding lattice extension: 8 metres + 7 metres. Offset angles: 0°, 15°, 30°.
- 10-tonne hookblock (3 lines), 30-tonne (9 lines) and single line hook.
- Rooster sheave for single line work.
- Tyres: 16.00 R 25, 17.5 R 25.
- Spare wheel.
- Auxiliary winch: cable diameter 15 mm, length 150 m.
- Electrical retarder (TELMA).
- Counterweight removal system.
- Other optional equipment on request.

Forces et hauteurs de levage

Lifting capacities / Lifting heights

75%



Flèche principale

Main boom

75%

CHARGES SUR STABILISATEURS EN EXTENSION TOTALE SUR 360°
ON OUTRIGGERS FULLY EXTENDED OVER 360°

m	FLECHE ENTIEREMENT TELESCOPIQUE DE 9,40 m A 30,40 m FULLY TELESCOPIC BOOM FROM 9.40 m TO 30.40 m							m
	9,40 m	12,90 m	16,40 m	19,90 m	23,40 m	26,90 m	30,40 m	
2,70	30,00	20,25	17,40	12,30				2,70
3	28,00	20,25	17,40	12,30				3
3,50	23,70	20,25	17,40	12,30	10,10			3,50
4	20,50	20,25	17,40	12,30	10,10			4
4,50	18,00	18,45	17,40	12,30	10,10	9,00		4,50
5	15,85	16,40	16,65	12,30	10,10	9,00		5
6	12,25	13,25	13,45	12,10	10,10	8,80	8,00	6
7	9,15	11,00	11,15	10,70	9,30	7,80	7,30	7
8		9,15	9,10	9,05	8,30	7,10	6,55	8
9		7,50	7,80	7,80	7,35	6,45	5,95	9
10		6,20	6,40	6,40	6,40	5,90	5,45	10
11			5,45	5,45	5,45	5,45	5,00	11
12			4,75	4,75	4,75	4,75	4,65	12
13			4,05	4,10	4,10	4,10	4,10	13
14			3,45	3,50	3,50	3,50	3,50	14
15				3,10	3,10	3,10	3,10	15
16				2,80	2,80	2,80	2,80	16
17				2,40	2,45	2,45	2,45	17
18					2,15	2,15	2,15	18
19					1,85	1,85	1,85	19
20					1,65	1,65	1,65	20
21					1,45	1,45	1,45	21
22						1,25	1,25	22
23						1,10	1,15	23
24						1,00	1,00	24
25							0,90	25
26							0,80	26
27							0,65	27
28							0,50	28

Machine de base + CP 4 000 kg - Basic machine + CWT 4 000 kg

CALAGE INTERMEDIAIRE SUR 360°
ON OUTRIGGERS HALF EXTENDED OVER 360°

m	FLECHE ENTIEREMENT TELESCOPIQUE DE 9,40 m A 30,40 m FULLY TELESCOPIC BOOM FROM 9.40 m TO 30.40 m							m
	9,40 m	12,90 m	16,40 m	19,90 m	23,40 m	26,90 m	30,40 m	
3	27,95	20,25	17,40	12,30				3
3,50	23,70	20,25	17,40	12,30	10,10			3,50
4	20,50	20,25	17,40	12,30	10,10			4
4,50	18,00	18,45	17,40	12,30	10,10	9,00		4,50
5	15,85	16,40	16,65	12,30	10,10	9,00		5
6	11,85	11,75	10,65	11,60	10,10	8,80	8,00	6
7	8,65	8,70	8,70	8,60	8,55	7,80	7,30	7
8		6,85	6,80	6,80	6,75	7,10	6,55	8
9		5,30	5,30	5,25	5,20	5,95	5,85	9
10		4,25	4,25	4,20	4,20	4,95	4,95	10
11			3,75	3,70	3,65	4,25	4,25	11
12			3,10	3,10	3,05	3,60	3,60	12
13			2,65	2,60	2,55	3,05	3,05	13
14			2,20	2,20	2,20	2,65	2,65	14
15				1,90	1,85	2,25	2,25	15
16				1,55	1,55	1,90	1,90	16
17				1,30	1,25	1,65	1,65	17
18					1,00	1,40	1,40	18
19					0,80	1,20	1,20	19
20					0,65	1,10	1,10	20
21					0,50	0,90	0,90	21
22						0,80	0,80	22
23						0,65	0,70	23
24						0,55	0,55	24
25							0,45	25

Machine de base + CP 4 000 kg - Basic machine + CWT 4 000 kg

CHARGES SUR PNEUS (suspensions AV et AR bloquées)
FREE ON WHEELS (front and rear suspensions locked)

m	SUR L'ARRIERE DANS L'AXE OVER REAR			SUR 360° OVER 360°			m
	9,40 m	12,90 m	16,40 m	9,40 m	12,90 m	16,40 m	
3	9,00	8,85	8,80	5,85	5,75	5,70	3
3,50	7,95	7,85	7,80	4,95	4,90	4,80	3,50
4	7,10	7,00	6,95	4,30	4,15	4,10	4
4,50	6,35	6,30	6,25	3,70	3,60	3,55	4,50
5	5,75	5,65	5,60	3,20	3,15	3,05	5
6	4,75	4,65	4,60	2,45	2,40	2,35	6
7	4,00	3,90	3,85	1,90	1,85	1,75	7
8		3,25	3,25		1,40	1,35	8
9		2,75	2,70		1,05	1,00	9
10		2,35	2,30		0,80	0,70	10
11			1,95				11
12			1,65				12
13			1,40				13
14			1,10				14
15							15
16							16
17							17
18							18
19							19
20							20
21							21
22							22
23							23
24							24
25							25

Machine de base + CP 4 000 kg - Basic machine + CWT 4 000 kg

Flèche principale

Main boom

75%

CHARGES SUR STABILISATEURS EN EXTENSION TOTALE SUR 360° ON OUTRIGGERS FULLY EXTENDED OVER 360°

m	FLECHE ENTIEREMENT TELESCOPIQUE DE 9,40 m A 30,40 m FULLY TELESCOPIC BOOM FROM 9.40 m TO 30.40 m							m
	9,40 m	12,90 m	16,40 m	19,90 m	23,40 m	26,90 m	30,40 m	
2,70	30,00	20,25	17,40	12,30				2,70
3	28,00	20,25	17,40	12,30				3
3,50	23,70	20,25	17,40	12,30	10,10			3,50
4	20,50	20,25	17,40	12,30	10,10			4
4,50	18,00	18,45	17,40	12,30	10,10	9,00		4,50
5	15,85	16,40	16,65	12,30	10,10	9,00		5
6	12,25	13,25	13,45	12,10	10,10	8,80	8,00	6
7	9,15	10,70	10,65	10,60	9,30	7,80	7,30	7
8		8,95	8,95	8,95	8,30	7,10	6,55	8
9		7,25	7,30	7,30	7,15	6,45	5,95	9
10		5,90	6,00	6,00	6,00	5,90	5,45	10
11			5,05	5,05	5,05	5,05	5,00	11
12			4,40	4,40	4,40	4,40	4,40	12
13			3,75	3,80	3,80	3,80	3,80	13
14			3,15	3,20	3,20	3,20	3,20	14
15				2,85	2,85	2,85	2,85	15
16				2,55	2,55	2,55	2,55	16
17				2,20	2,25	2,25	2,25	17
18					1,95	1,95	1,95	18
19					1,65	1,65	1,65	19
20					1,45	1,45	1,45	20
21					1,25	1,25	1,25	21
22						1,10	1,10	22
23						0,95	1,00	23
24						0,85	0,85	24
25							0,75	25
26							0,65	26
27							0,55	27
28							0,45	28

Machine de base + CP 3 200 kg - Basic machine + CWT 3 200 kg

CALAGE INTERMEDIAIRE SUR 360° ON OUTRIGGERS HALF EXTENDED OVER 360°

m	FLECHE ENTIEREMENT TELESCOPIQUE DE 9,40 m A 30,40 m FULLY TELESCOPIC BOOM FROM 9.40 m TO 30.40 m							m
	9,40 m	12,90 m	16,40 m	19,90 m	23,40 m	26,90 m	30,40 m	
3	27,95	20,25	17,40	12,30				3
3,50	23,70	20,25	17,40	12,30	10,10			3,50
4	20,50	20,25	17,40	12,30	10,10			4
4,50	18,00	18,45	17,40	12,30	10,10	9,00		4,50
5	15,85	16,30	16,25	12,30	10,10	9,00		5
6	11,00	10,90	10,80	10,75	10,10	8,80	8,00	6
7	8,00	8,05	8,05	7,95	7,90	7,80	7,30	7
8		6,30	6,25	6,25	6,20	6,55	6,55	8
9		4,85	4,85	4,80	4,75	5,40	5,40	9
10		3,85	3,85	3,80	3,80	4,55	4,55	10
11			3,40	3,35	3,30	3,90	3,90	11
12			2,80	2,80	2,75	3,30	3,30	12
13			2,35	2,30	2,25	2,75	2,75	13
14			1,95	1,95	1,95	2,40	2,40	14
15				1,65	1,60	2,00	2,00	15
16				1,35	1,35	1,70	1,70	16
17				1,10	1,05	1,45	1,45	17
18					0,80	1,20	1,20	18
19					0,60	1,00	1,00	19
20					0,45	0,90	0,90	20
21						0,75	0,75	21
22						0,65	0,65	22
23						0,50	0,55	23

Machine de base + CP 3 200 kg - Basic machine + CWT 3 200 kg

CHARGES SUR PNEUS (suspensions AV et AR bloquées) FREE ON WHEELS (front and rear suspensions locked)

m	SUR L'ARRIERE DANS L'AXE OVER REAR			SUR 360° OVER 360°			m
	9,40 m	12,90 m	16,40 m	9,40 m	12,90 m	16,40 m	
3	9,00	8,85	8,80	5,85	5,75	5,70	3
3,50	7,95	7,85	7,80	4,95	4,90	4,80	3,50
4	7,10	7,00	6,95	4,30	4,15	4,10	4
4,50	6,35	6,30	6,25	3,70	3,60	3,55	4,50
5	5,75	5,65	5,60	3,20	3,15	3,05	5
6	4,75	4,65	4,60	2,45	2,40	2,35	6
7	4,00	3,90	3,85	1,90	1,85	1,75	7
8		3,25	3,25		1,40	1,35	8
9		2,75	2,70		1,05	1,00	9
10		2,30	2,30		0,80	0,70	10
11			1,90			0,50	11
12					1,50		12
13					1,20		13
14					0,90		14
15							15
16							16
17							17
18							18
19							19
20							20
21							21
22							22
23							23

Machine de base + CP 3 200 kg - Basic machine + CWT 3 200 kg

Extension 8 m / 15 m

8 m / 15 m Extension

75%

CHARGES SUR STABILISATEURS EN EXTENSION TOTALE SUR 360° ON OUTRIGGERS FULLY EXTENDED OVER 360°

m	Extension 8 m / 15 m 8 m / 15 m Extension								m		
	23,40 m + 8 m		26,90 m + 8 m		30,40 m + 8 m			30,40 m + 15 m			
	0°	0°	0°	15°	30°	0°	15°	30°			
5	5,65									5	
6	5,65	4,00								6	
7	5,20	4,00								7	
8	4,90	4,00	3,30							8	
9	4,60	4,00	3,30							9	
10	4,30	3,80	3,30	3,20		1,70				10	
11	4,05	3,55	3,30	3,00		1,70				11	
12	3,85	3,30	3,25	2,80	2,50	1,70				12	
13	3,50	3,10	3,05	2,65	2,40	1,70				13	
14	3,15	2,90	2,85	2,50	2,30	1,70	1,40			14	
15	2,85	2,70	2,70	2,40	2,20	1,70	1,40			15	
16	2,60	2,55	2,55	2,30	2,10	1,65	1,35			16	
17	2,30	2,40	2,40	2,20	2,05	1,65	1,30	1,10		17	
18	2,00	2,25	2,20	2,10	1,95	1,60	1,25	1,05		18	
19	1,75	1,95	1,90	2,00	1,85	1,55	1,25	1,05		19	
20	1,55	1,75	1,70	1,85	1,80	1,50	1,20	1,05		20	
21	1,35	1,55	1,50	1,65	1,70	1,45	1,20	1,00		21	
22	1,20	1,40	1,35	1,45	1,55	1,40	1,15	1,00		22	
23	1,05	1,25	1,20	1,30	1,35	1,35	1,15	1,00		23	
24	0,90	1,10	1,05	1,15	1,20	1,30	1,10	0,95		24	
25	0,75	1,00	0,90	1,00	1,05	1,20	1,10	0,95		25	
26	0,65	0,90	0,80	0,85	0,95	1,05	1,05	0,95		26	
27	0,55	0,80	0,65	0,75	0,85	0,90	1,05	0,95		27	
28	0,40	0,70	0,60	0,65	0,75	0,80	1,00	0,90		28	
29	0,35	0,60	0,50	0,55	0,65	0,70	0,90	0,90		29	
30		0,55	0,45	0,50	0,55	0,65	0,80	0,90		30	
31		0,45	0,40	0,45	0,45	0,55	0,70	0,80		31	
32		0,40	0,35	0,35	0,40	0,45	0,60	0,70		32	
33						0,40	0,50	0,60		33	
34						0,35	0,45	0,50		34	
35							0,35	0,40		35	
36								0,35		36	

Machine de base + CP 3 200 kg - Basic machine + CWT 3 200 kg

NOTES

1 - Les charges indiquées sont les maximales couvertes par la garantie du constructeur. Elles sont données en tonnes métriques. Le poids des crochets et des accessoires de levage est à déduire des charges indiquées.

Déduction des charges :

● Utilisation de la flèche principale avec l'extension déployée : déduire 750 kg (extension 8m), 1650 kg (extension 15m).

● Moufle et crochet (voir tableau).

2 - Les charges indiquées au-dessus du trait gras sont fonction de la résistance de certains organes. Les charges en dessous du trait gras sont fonction de la stabilité de la grue. Elles ne dépassent en aucun cas 75% de la charge maximale que peut admettre la grue.

3 - Les charges indiquées au-dessus du trait pointillé sont obtenues en flèche 3 éléments télescopés, celles en-dessous sont obtenues en flèche 4 éléments télescopés.

4 - Charges sur pneus : opérer sur sol horizontal et dur avec pression des pneumatiques correcte et suspension bloquée en position basse. Pour rouler en charge, opérer à la plus petite vitesse sélectionnable, flèche courte sur l'arrière dans l'axe et charge élinguée au plus près du châssis.

5 - PPM se réserve le droit si nécessaire de modifier le matériel par rapport aux renseignements donnés ici à titre indicatif.

NOTES

1 - The tabulated loads are the maximum values covered by the manufacturer's guarantee. They are given in metric tonnes and include the weight of hook block and other hoisting equipment.

Deductions from rated loads :

● Use of main boom with extension erected : deduct 750 kg (8m extension), 1650kg (15m extension).

● Hook blocks (see specification chart).

2 - Loads above the bold horizontal line are based on structural strength. Loads below the bold line are based on machine stability. The rated loads never exceed 75% of maximum lifting capacity.

3 - Loads shown above the dotted line are obtained with the boom in the 3-stage configuration, those below the dotted line with the boom in the 4-stage configuration.

4 - Free-on-wheels : operate on a firm and level surface with tyres inflated to the recommended pressure and front and rear suspensions locked. For pick and carry operation use the shortest boom centered over rear of the chassis with the load slung close to the chassis at the lowest available speed.

5 - PPM reserves the right to modify the above specifications which are given as a guide only (figures in accordance with metric system).

ORGANES DE LEVAGE

HOOK BLOCKS AND HOOKS

Forces de levage Lifting capacities	Poules Pulleys	Brins Parts of line	Poids Weight
30 t	4	8	320 kg
20 t	3	6	210 kg
10 t	1	3	160 kg
5 t	—	1	85 kg

ATT 340

Extension 8 m / 15 m

8 m / 15 m Extension

75%

CHARGES SUR STABILISATEURS EN EXTENSION TOTALE SUR 360° ON OUTRIGGERS FULLY EXTENDED OVER 360°

m	Extension 8 m / 15 m 8 m / 15 m Extension								m		
	23,40 m + 8 m		26,90 m + 8 m		30,40 m + 8 m			30,40 m + 15 m			
	0°	0°	0°	15°	30°	0°	15°	30°			
5	5,65									5	
6	5,65	4,00								6	
7	5,20	4,00								7	
8	4,90	4,00	3,30							8	
9	4,60	4,00	3,30							9	
10	4,30	3,80	3,30	3,20		1,70				10	
11	4,05	3,55	3,30	3,00		1,70				11	
12	3,85	3,30	3,25	2,80	2,50	1,70				12	
13	3,65	3,10	3,05	2,65	2,40	1,70				13	
14	3,45	2,90	2,85	2,50	2,30	1,70	1,40			14	
15	3,10	2,70	2,70	2,40	2,20	1,70	1,40			15	
16	2,85	2,55	2,55	2,30	2,10	1,65	1,35			16	
17	2,50	2,40	2,40	2,20	2,05	1,65	1,30	1,10		17	
18	2,20	2,30	2,30	2,10	1,95	1,60	1,25	1,05		18	
19	1,95	2,15	2,10	2,00	1,85	1,55	1,25	1,05		19	
20	1,75	1,95	1,90	1,90	1,80	1,50	1,20	1,05		20	
21	1,55	1,75	1,70	1,85	1,75	1,45	1,20	1,00		21	
22	1,35	1,55	1,50	1,60	1,70	1,40	1,15	1,00		22	
23	1,20	1,40	1,35	1,45	1,50	1,35	1,15	1,00		23	
24	1,05	1,25	1,20	1,30	1,35	1,30	1,10	0,95		24	
25	0,90	1,15	1,05	1,15	1,20	1,30	1,10	0,95		25	
26	0,80	1,05	0,95	1,00	1,10	1,20	1,05	0,95		26	
27	0,65	0,90	0,75	0,85	0,95	1,00	1,05	0,95		27	
28	0,50	0,80	0,70	0,75	0,85	0,90	1,00	0,90		28	
29	0,45	0,70	0,60	0,65	0,75	0,80	1,00	0,90		29	
30		0,65	0,55	0,60	0,65	0,75	0,90	0,90		30	
31		0,55	0,50	0,55	0,55	0,65	0,80	0,90		31	
32		0,50	0,45	0,45	0,50	0,55	0,70	0,80		32	
33				0,40	0,40	0,50	0,60	0,70		33	
34						0,45	0,55	0,60		34	
35						0,35	0,45	0,50		35	
36							0,40	0,45		36	
37								0,35		37	

Machine de base + CP 4 000 kg - Basic machine + CWT 4 000 kg

ATT 340

NOTES

- Les charges indiquées sont les maximales couvertes par la garantie du constructeur. Elles sont données en tonnes métriques. Le poids des crochets et des accessoires de levage est à déduire des charges indiquées.
Dédution des charges :
● Utilisation de la flèche principale avec l'extension déployée : déduire 750 kg (extension 8m), 1650 kg (extension 15m).
● Mouflage et crochet (voir tableau).
- Les charges indiquées au-dessus du trait gras sont fonction de la résistance de certains organes. Les charges en dessous du trait gras sont fonction de la stabilité de la grue. Elles ne dépassent en aucun cas 75% de la charge maximale que peut admettre la grue.
- Les charges indiquées au-dessus du trait pointillé sont obtenues en flèche 3 éléments télescopés, celles en-dessous sont obtenues en flèche 4 éléments télescopés.
- Charges sur pneus : opérer sur sol horizontal et dur avec pression des pneumatiques correcte et suspension bloquée en position basse. Pour rouler en charge, opérer à la plus petite vitesse sélectionnable, flèche courte sur l'arrière dans l'axe et charge élinguée au plus près du châssis.
- PPM se réserve le droit si nécessaire de modifier le matériel par rapport aux renseignements donnés ici à titre indicatif.

NOTES

- The tabulated loads are the maximum values covered by the manufacturer's guarantee. They are given in metric tonnes and include the weight of hook block and other hoisting equipment.
Deductions from rated loads :
● Use of main boom with extension erected : deduct 750 kg (8m extension), 1650kg (15m extension).
● Hook blocks (see specification chart).
- Loads above the bold horizontal line are based on structural strength. Loads below the bold line are based on machine stability. The rated loads never exceed 75% of maximum lifting capacity.
- Loads shown above the dotted line are obtained with the boom in the 3-stage configuration, those below the dotted line with the boom in the 4-stage configuration.
- Free-on-wheels : operate on a firm and level surface with tyres inflated to the recommended pressure and front and rear suspensions locked. For pick and carry operation use the shortest boom centered over rear of the chassis with the load slung close to the chassis at the lowest available speed.
- PPM reserves the right to modify the above specifications which are given as a guide only (figures in accordance with metric system).



Siège social et usine :

Z.I. La Saule - 71304 MONTCEAU LES MINES Cedex

Services commerciaux :

136, rue Julian Grimau
94408 VITRY SUR SEINE Cedex
Tél. (1) 45 73 39 36
Fax (1) 45 73 39 45
Télex 261 651

