



ATT 1354



ATT 1354

MAIN TECHNICAL CHARACTERISTICS

● TYPE	- 5-axle all terrain crane
● TONNAGE	- 120 tonnes at 3 meters over 360°
● BOOM	- 53,7 m on 6 boom-sections - 5 to 25 meters extension - Offset angle 0°, 15° and 26°
● HEIGHT	- 53 m under hook - 78 m under hook on double-folding lattice extension
● HYDRAULICS	- 3 main circuits. Independence of each movement
● CHASSIS	- 10 x 6 x 6 (on road) - 10 x 6 x 10 (on site)
● ENGINE	- MERCEDES 435 HP Turbo diesel (carrier) MERCEDES 160 HP Turbo diesel (upperstructure)
● SUSPENSION	- Hydropneumatic suspension with controlled damping and slide slope compensation

WEIGHT

Counterweight \ Axles	1	2	3	4	5	Poids total
4,2 t	11,4	11,6	11,4	12	12	58,4 t

1600 x 25 tyres, 20 m-double folding extension , 65 t-hookblock and spare wheel

GEARS

Gear ratios (Forward/Reverse)	1	2	3	4	5	1	1	2	3	4	5	1
Speed (high range)	9	22	35	51	70	15	10	24	38	55	76	16
Speed (low range)	5	13	20	29	41	9	6	14	22	32	44	9
Gradeability	60 %						54 %					
	14.00 R 25						16.00 R 25					

Lifting	Main winch: maximum linepull (1st layer/last layer)	9.4 / 7.5 tonnes
	Main winch: maximum single linespeed	120 m/mn
	Auxiliary winch: maximum linepull (1st layer/last layer)	9.4 / 7.5 tonnes
	Auxiliary winch: maximum single linespeed	120 m/mn
Derricking	Time to move from - 3° to 80°	40 seconds
Telescoping	Time to extend from 12 meters to 45 meters	130 seconds
Slewing	Speed of movement	0 to 1.8 rpm
Outriggers	Time to extend horizontal beams	40 seconds
	Time to extend vertical jacks	25 seconds

CARRIER AND POWERTRAIN

- **STRUCTURE** - PPM design. Machine welded carrier frame from high-tensile steel.
- **OUTRIGGER OPERATION** - Outriggers controlled from each side of the carrier.
 - Horizontal beams extended independently.
 - Lifting capacities with outriggers half-extended or fully retracted.
 - Stabilizer pads permanently in position. Stowed by sliding under the outrigger jack.
- **ENGINE** - Mercedes V8 OM 442 LA, turbodiesel. Water cooled. 435 HP at 2,100 rpm (320 KW). Maximum torque : 1,880 N.m at 1,100 rpm. 14.6 litre capacity. Complies with EC anti-pollution directives (91 / 542). Fuel tank capacity : 500 litres.
- **TRANSMISSION** - Torque convertor and automatic gearbox with 6 forward and 1 reverse gears.
 - Low range on each ratio increases traction in rough terrain.
 - Automatic lock-up on all gears.
 - Front axle is pneumatically connectable.
- **AXLES** - Axles 2, 4, 5 are drive axles with planetary hub reduction.
 - Inter-wheels differential can be locked on each drive axle.
 - Inter-axles (4 / 5) differential can be locked.
- **SUSPENSION** - PPM HYDROSTABLE hydropneumatic suspension :
 - Shock absorption controlled via integrated valves inside suspension cylinders.
 - Hydraulic anti-rolling device stabilizes the crane in corners and bends.
 - Constant trim and slope level adjustment.
 - Suspension hydraulically lockable.
- **STEERING** - Axles 1, 2, 3 are steer axles on road.
 - Axles 4, 5 are steer axles on site.
 - Short radius and crab steer.
 - Power-assisted steering by twin steering circuit complying with EC directives.
- **BRAKING** - Complying with EC directives.
 - Brake drums pneumatically operated, twin circuits brake on each axle.
 - Emergency brake : spring-loaded on 3 / 4 / 5 axles.
 - Hydraulic retarder flanged behind the torque convertor .
- **TYRES** - Ten 16.00 x 25 tyres.
- **CAB** - Three-seater cab equipped with all the equipments necessary to allow comfortable and safe travelling. Adjustable mirrors. Tinted windows. Cathaphoresis treated cab to prevent rusting. Access by rigid steps fold away in rough terrain.
- **ELECTRIC CIRCUITS** - 24 volts. 2 batteries (12 V / 215 Ah).
 - Circuit-breaker protected.
 - Printed circuits in both cabs improve wiring reliability.
 - Electrical harness with marked wires protected by thermoplastic sheaths : can be easily accessed and dismantled.
 - EC approved lighting.
- **PNEUMATIC CIRCUITS** - Air dryer to purify and dry the compressed air.

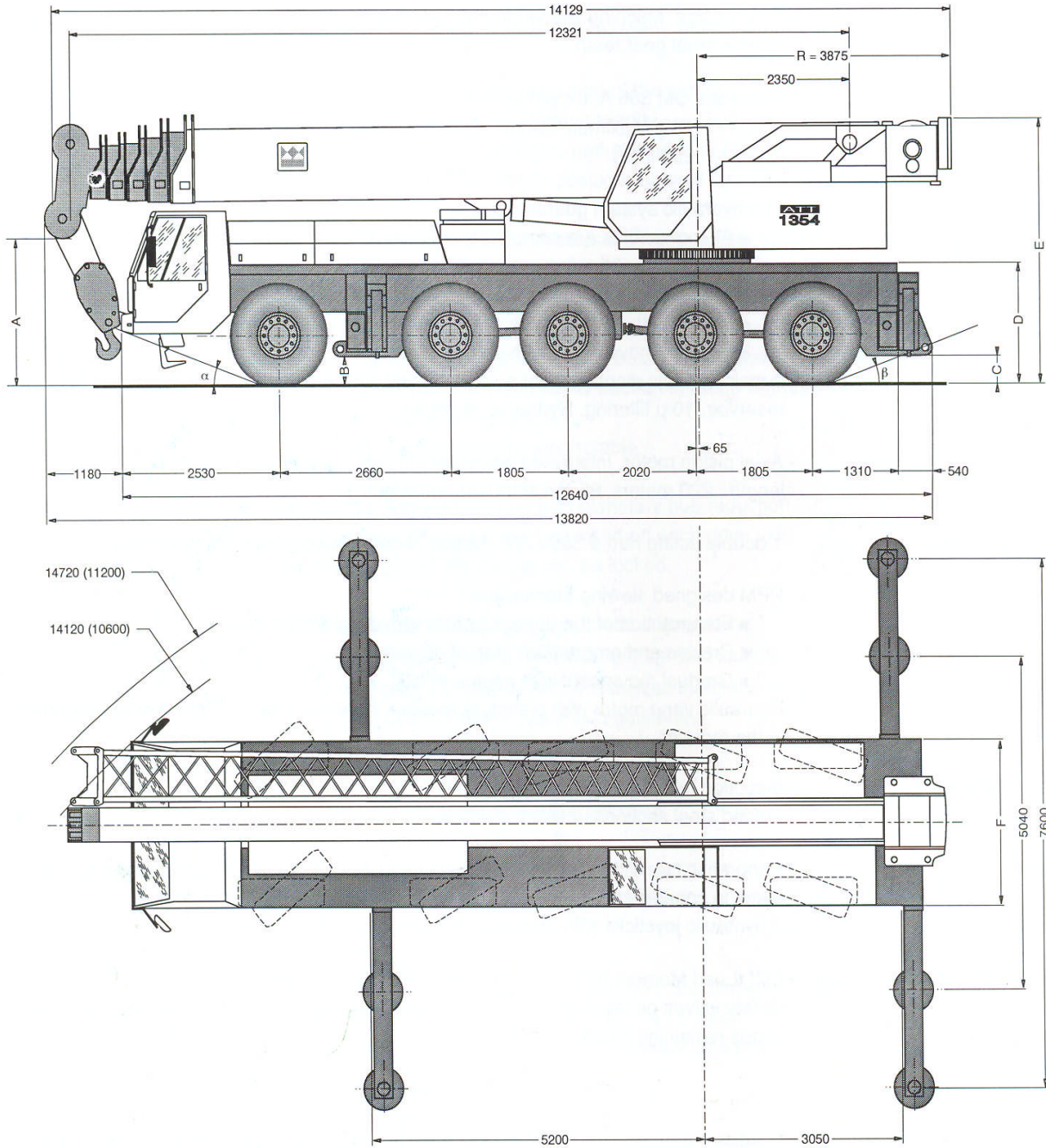
UPPERSTRUCTURE

- **CONSTRUCTION** - PPM design. Machine welded frame from high-tensile steel. Ball bearing slewing ring with external gear teeth.
- **ENGINE** - Mercedes OM 366 A, 6-cylinder in line turbo diesel. Water cooled. 160 HP at 2,100 rpm (117 KW). Maximum torque : 560 N.m at 1,400 rpm. 5.96 litre capacity. Fuel tank capacity : 200 litres.
- **HYDRAULICS** - The hydraulic system guarantees :
 - All movements are completely independent.
 - The speed of the movements is independent of the load.
 - Precise and progressive start of all movements.
 - Speed of the movements proportional to the joystick angle.
 - Gradual movements with engine at idle.
 - 2 main variable displacement pumps. 1 fixed displacement pump for slewing. 900 litre reservoir. 10 μ filtering. Hydraulic oil cooler.
- **WINCH** - Axial piston motor. Integrated planetary reducer. Cable diameter : 20 mm. Cable length : 220 meters. 65-ton standard hookblock.
- **DERRICKING** - 1 double acting ram \varnothing 360 / 280. Speed of descent controlled by safety valve.
- **SLEWING** - PPM designed slewing mechanism :
 - Free rotation of the upperstructure with dynamic foot brake.
 - Precise and progressive start of movement.
 - Gradual movement with engine at idle.
 - Hydraulic vane motor with planetary reducer. Dynamic hydraulic disc brake integrated in the reducer.
- **TELESCOPING** - 6-section full power telescopic boom.
- Folded steel sections optimize guiding.
- **CAB** - Panoramic cab with full visibility and equipped with all the controls for operating the crane in comfort and safety. Tinted windows. Cataphoresis treated cab.
- 2 hydraulic joysticks with automatic return to neutral.
- **SAFETY DEVICES** - LMI (Load Moment Indicator). Alphanumeric LCD display.
- Safety valves on telescoping, derricking and stabilizers. Anti two-block device, three wraps remaining safety device.

OPTIONS

- Lattice extension : 10.5 meters, can be folded and stored along the right hand side of the boom. Offset angles : 0°, 15°, 27°.
- Double-folding lattice extension : 10.5 meters + 9.5 meters, can be folded and stored along the right hand side of the boom. Offset angles : 0°, 15°, 27°.
- Lattice extension 5 m.
- 20-ton, 100-ton and single line hookblocks.
- Rooster sheave for single line lift.
- Tyres : 20.5 R 25.
- Spare wheel.
- 10 x 8 transmission.
- Auxiliary winch.
- Additional counterweight.
- Other optional equipments on request.

DIMENSIONS



	A	B	C	D	E	F	α	β
14.00 R 25	2000	430	420	1765	3785	2500	20°	19°
16.00 R 25	2050	480	470	1815	3825	2700	22°	21°
20.5 x 25	2037	467	457	1802	3812	2750	22°	21°

* - 80 mm suspension abaissée / - 80 mm suspension in lower position



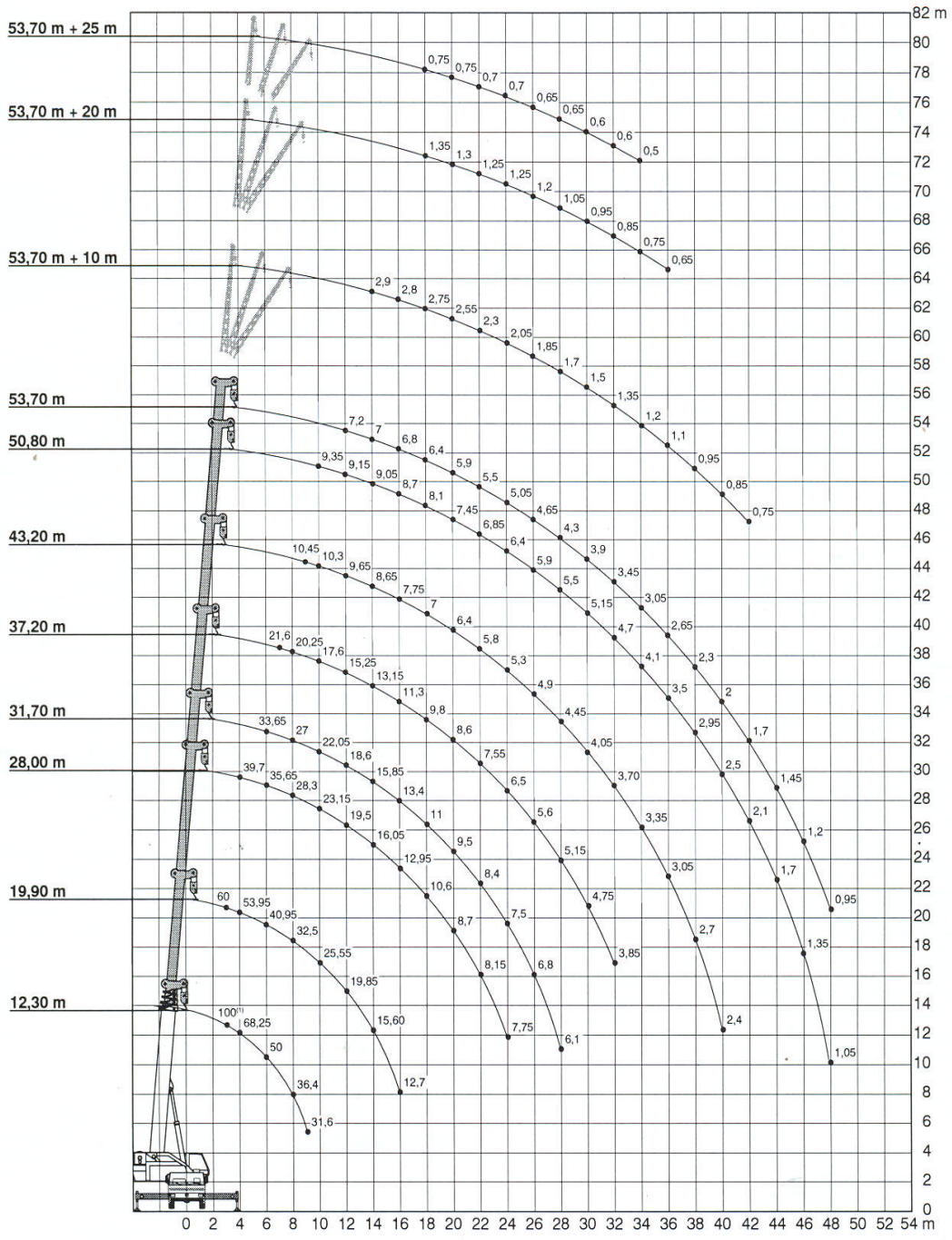
Z.I. La Saule - B.P. 106
 71304 Montceau-les-Mines Cedex - FRANCE
 Tél. (33) 03 85 67 38 00 - Fax (33) 03 85 67 38 99



ATT 1354



Charges, hauteurs et portées
Lifting capacities, heights and radius
Traglasten / Hubhöhen
Cargas, alturas y alcances



Contrepoids max. / Max. counterweight / Max. Gegengewicht / Contrapeso máximo : 23 T.



TEREX CRANES

