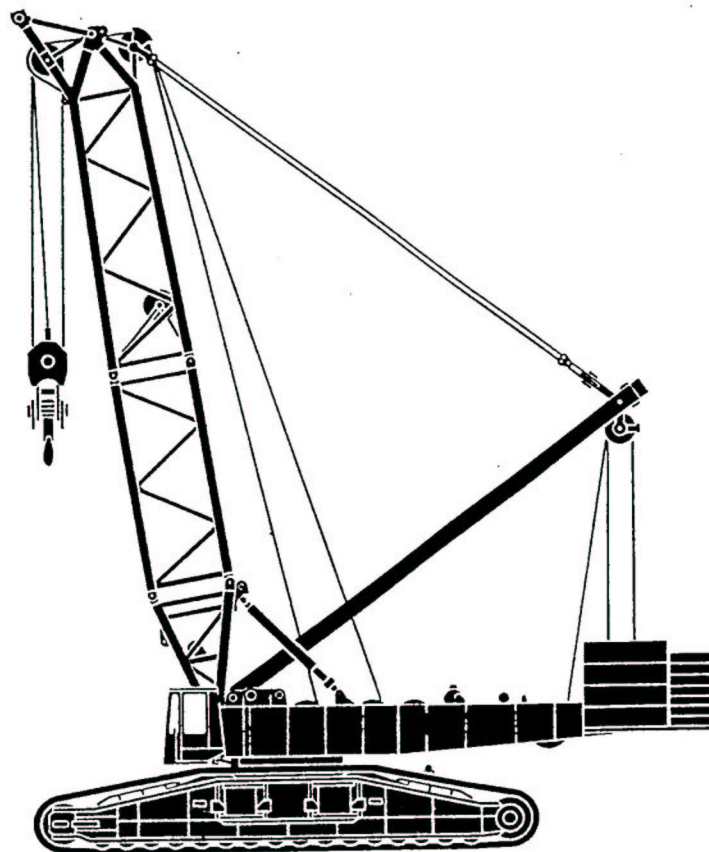
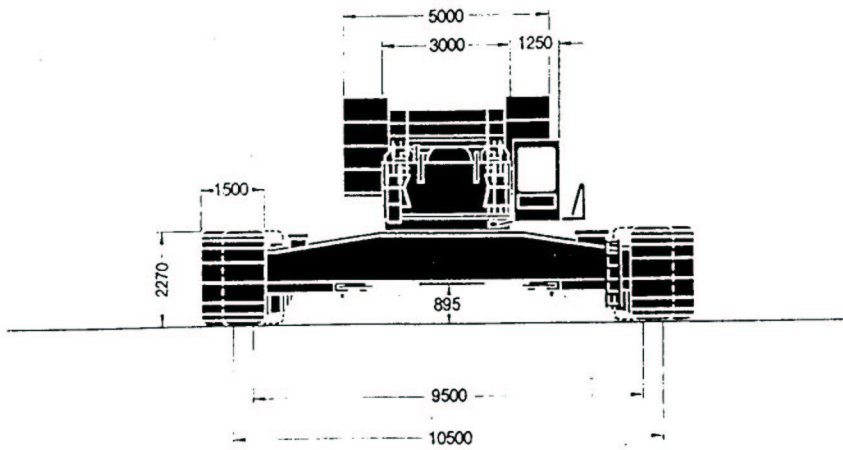
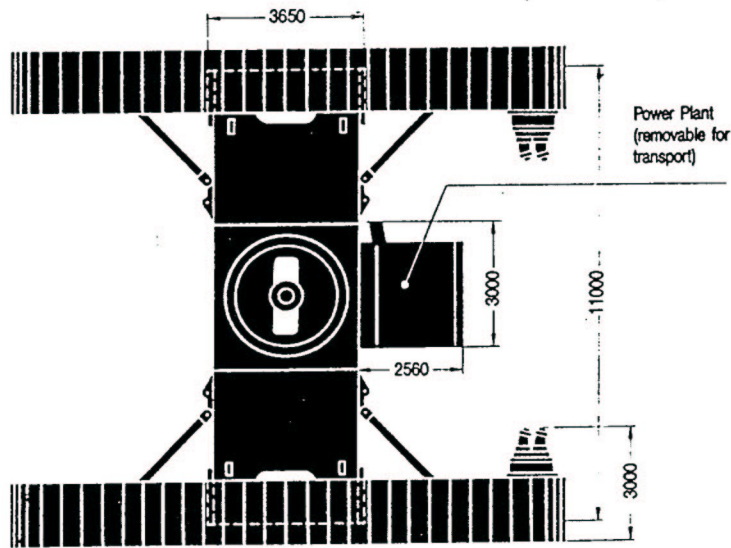
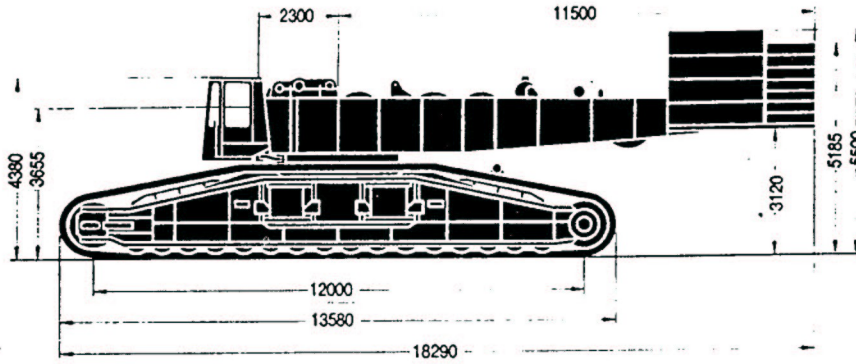
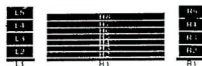
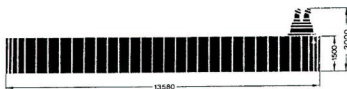
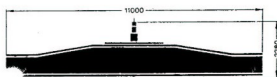
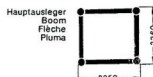
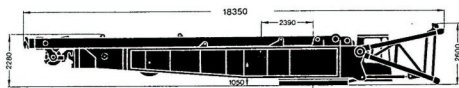

DEMAG CC4000





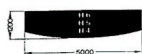
Weight of Counterweighted Machine with 18 m Boom	425 t
Superstructure (with 4 drums, foot section of boom and mast gantry)	77,8 t
Carbody	51,5 t
Crawler Side-Frames	2 x 72,3 t
Counterweight	140 t
Ground Pressure (based on a total weight of 425 t)	(1,18 kp/cm ²) 11,8 N/m ²



1230 x 5000 x 730
4,83 t



1200 x 5000 x 315
2 x 9,1 t = 18,2 t



1200 x 5000 x 285
3 x 8,8 t = 26,4 t



1200 x 5000 x 345
2 x 8,7 t = 17,4 t



1235 x 2200 x 600
2,3 t



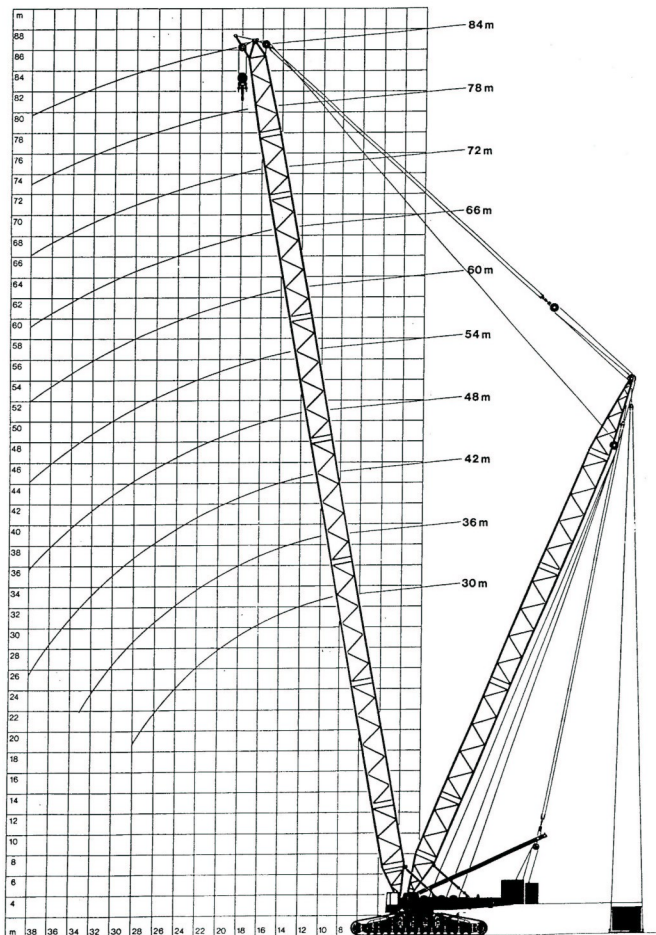
1110 x 2200 x 600
4 x 8,7 t = 34,8 t




1110 x 2200 x 600
4 x 8,7 t = 34,8 t



1235 x 2200 x 600
2,3 t



Main Boom	Mast Length		Superlift Counterweight (t)												
	m	Radius	0		50		100		150		200		250		
			t	t	t	t	t	t	t	t	t	t	t	t	
with Heavy-Duty Hammer Head	30	Mast	8.5	430	*500	565	635	705	775	845	915	985	1055	1125	1195
			10	422	*477	542	612	682	752	822	892	962	1032	1102	1172
	12	416	*471	536	606	676	746	816	886	956	1026	1096	1166	1236	
	14	410	*465	530	600	670	740	810	880	950	1020	1090	1160	1230	
	16	404	*459	524	594	664	734	804	874	944	1014	1084	1154	1224	
	18	398	*453	518	588	658	728	798	868	938	1008	1078	1148	1218	
	20	392	*447	512	582	652	722	792	862	932	1002	1072	1142	1212	
	22	386	*441	506	576	646	716	786	856	926	996	1066	1136	1206	
	24	380	*435	500	570	640	710	780	850	920	990	1060	1130	1200	
	26	374	*429	494	564	634	704	774	844	914	984	1054	1124	1194	
	28	368	*423	488	558	628	698	768	838	908	978	1048	1118	1188	
	with Universal-Head	30	Mast	10	376	459	524	594	664	734	804	874	944	1014	1084
12				368	450	515	585	655	725	795	865	935	1005	1075	1145
14		360	442	507	577	647	717	787	857	927	997	1067	1137	1207	
16		352	434	499	569	639	709	779	849	919	989	1059	1129	1199	
18		344	426	491	561	631	701	771	841	911	981	1051	1121	1191	
20		336	418	483	553	623	693	763	833	903	973	1043	1113	1183	
22		328	410	475	545	615	685	755	825	895	965	1035	1105	1175	
24		320	402	467	537	607	677	747	817	887	957	1027	1097	1167	
26		312	394	459	529	599	669	739	809	879	949	1019	1089	1159	
28		304	386	451	521	591	661	731	801	871	941	1011	1081	1151	
30		296	378	443	513	583	653	723	793	863	933	1003	1073	1143	
54		42	Mast	14	*287	*359	400	450	500	550	600	650	700	750	800
	16			279	351	392	442	492	542	592	642	692	742	792	842
	18	271	343	384	434	484	534	584	634	684	734	784	834	884	
	20	263	335	376	426	476	526	576	626	676	726	776	826	876	
	22	255	327	368	418	468	518	568	618	668	718	768	818	868	
	24	247	319	360	410	460	510	560	610	660	710	760	810	860	
	26	239	311	352	402	452	502	552	602	652	702	752	802	852	
	28	231	303	344	394	444	494	544	594	644	694	744	794	844	
	30	223	295	336	386	436	486	536	586	636	686	736	786	836	
	32	215	287	328	378	428	478	528	578	628	678	728	778	828	
	34	207	279	320	370	420	470	520	570	620	670	720	770	820	
	66	42	Mast	18	*210	*278	320	360	400	440	480	520	560	600	640
20				202	270	312	352	392	432	472	512	552	592	632	672
22		194	262	304	344	384	424	464	504	544	584	624	664	704	
24		186	254	296	336	376	416	456	496	536	576	616	656	696	
26		178	246	288	328	368	408	448	488	528	568	608	648	688	
28		170	238	280	320	360	400	440	480	520	560	600	640	680	
30		162	230	272	312	352	392	432	472	512	552	592	632	672	
32		154	222	264	304	344	384	424	464	504	544	584	624	664	
34		146	214	256	296	336	376	416	456	496	536	576	616	656	
36		138	206	248	288	328	368	408	448	488	528	568	608	648	
38		130	198	240	280	320	360	400	440	480	520	560	600	640	
72		42	Mast	22	*185	*253	292	332	372	412	452	492	532	572	612
	24			177	245	284	324	364	404	444	484	524	564	604	644
	26	169	237	276	316	356	396	436	476	516	556	596	636	676	
	28	161	229	268	308	348	388	428	468	508	548	588	628	668	
	30	153	221	260	300	340	380	420	460	500	540	580	620	660	
	32	145	213	252	292	332	372	412	452	492	532	572	612	652	
	34	137	205	244	284	324	364	404	444	484	524	564	604	644	
	36	129	197	236	276	316	356	396	436	476	516	556	596	636	
	38	121	189	228	268	308	348	388	428	468	508	548	588	628	
	40	113	181	220	260	300	340	380	420	460	500	540	580	620	
	42	105	173	212	252	292	332	372	412	452	492	532	572	612	
	78	42	Mast	26	*150	*218	252	292	332	372	412	452	492	532	572
28				142	210	244	284	324	364	404	444	484	524	564	604
30		134	202	236	276	316	356	396	436	476	516	556	596	636	
32		126	194	228	268	308	348	388	428	468	508	548	588	628	
34		118	186	220	260	300	340	380	420	460	500	540	580	620	
36		110	178	212	252	292	332	372	412	452	492	532	572	612	
38		102	170	204	244	284	324	364	404	444	484	524	564	604	
40		94	162	196	236	276	316	356	396	436	476	516	556	596	
42		86	154	188	228	268	308	348	388	428	468	508	548	588	
44		78	146	180	220	260	300	340	380	420	460	500	540	580	
46		70	138	172	212	252	292	332	372	412	452	492	532	572	
84		42	Mast	30	*125	*193	228	268	308	348	388	428	468	508	548
	32			117	185	220	260	300	340	380	420	460	500	540	580
	34	109	177	212	252	292	332	372	412	452	492	532	572	612	
	36	101	169	204	244	284	324	364	404	444	484	524	564	604	
	38	93	161	196	236	276	316	356	396	436	476	516	556	596	
	40	85	153	188	228	268	308	348	388	428	468	508	548	588	
	42	77	145	180	220	260	300	340	380	420	460	500	540	580	
	44	69	137	172	212	252	292	332	372	412	452	492	532	572	
	46	61	129	164	204	244	284	324	364	404	444	484	524	564	
	48	53	121	156	196	236	276	316	356	396	436	476	516	556	
	50	45	113	148	188	228	268	308	348	388	428	468	508	548	
	84	42	Mast	34	*100	*168	204	244	284	324	364	404	444	484	524
36				92	160	196	236	276	316	356	396	436	476	516	556
38		84	152	188	228	268	308	348	388	428	468	508	548	588	
40		76	144	180	220	260	300	340	380	420	460	500	540	580	
42		68	136	172	212	252	292	332	372	412	452	492	532	572	
44		60	128	164	204	244	284	324	364	404	444	484	524	564	
46		52	120	156	196	236	276	316	356	396	436	476	516	556	
48		44	112	148	188	228	268	308	348	388	428	468	508	548	
50		36	104	140	180	220	260	300	340	380	420	460	500	540	
52		28	96	132	172	212	252	292	332	372	412	452	492	532	
54		20	88	124	164	204	244	284	324	364	404	444	484	524	
84		42	Mast	38	*75	*143	178	218	258	298	338	378	418	458	498
	40			67	135	170	210	250	290	330	370	410	450	490	530
	42	59	127	162	202	242	282	322	362	402	442	482	522	562	
	44	51	119	154	194	234	274	314	354	394	434	474	514	554	
	46	43	111	146	186	226	266	306	346	386	426	466	506	546	
	48	35	103	138	178	218	258	298	338	378	418	458	498	538	
	50	27	95	130	170	210	250	290	330	370	410	450	490	530	
	52	19	87	122	162	202	242	282	322	362	402	442	482	522	
	54	11	79	114	154	194	234	274	314	354	394	434			

 10.5-m Track, 140-t Counterweight

75% (360°)

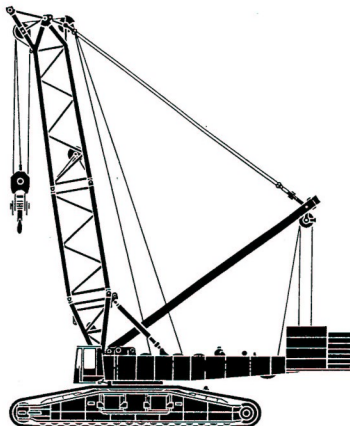
Radius m	Length of Main Boom														
	18 m	24 m	30 m	36 m	42 m	48 m	54 m	60 m	66 m	72 m	78 m	84 m	90 m	96 m	102 m
6	650**	-	-	-	-	-	-	-	-	-	-	-	-	-	-
7	570**	500*	-	-	-	-	-	-	-	-	-	-	-	-	-
8	500*	460*	440*	-	-	-	-	-	-	-	-	-	-	-	-
9	430*	425*	420*	420*	419*	-	-	-	-	-	-	-	-	-	-
10	380	375	375*	373*	371*	370*	360*	314*	-	-	-	-	-	-	-
12	307	305	303	302*	300*	299*	298*	296*	266*	232*	200*	-	-	-	-
14	258	256	254	253	251*	250*	248*	247*	246*	226*	199*	176*	152*	134*	110
16	222	220	218	217	215	214*	212*	211*	210*	208*	198*	174*	151*	132*	110
18	194	192	190	189	188	186	185*	184*	182*	181*	180*	172*	148*	130*	109
20	-	164	163	162	160	160	159	158	157*	156*	155*	155*	145*	128*	108
22	-	144	142	141	140	139	138	137	136	135*	134*	134*	133*	125*	106
24	-	-	126	125	123	122	121	120	119	118	117*	117*	116*	115*	104
26	-	-	113	112	110	109	108	107	106	105	104	103*	103*	102*	101
28	-	-	102	101	99	98	97	96	95	94	93	92	91*	91*	90
30	-	-	-	92	90	89	88	87	86	85	84	83	82	82	81
34	-	-	-	-	76	75	74	72	71	70	69	69	68	67	66
38	-	-	-	-	65	64	63	61	60	59	58	58	57	56	55
42	-	-	-	-	-	56	54	53	52	51	50	49	48	47	46
46	-	-	-	-	-	-	48	46	45	44	43	42	41	40	39
50	-	-	-	-	-	-	-	41	39	38	37	36	35	34	33
54	-	-	-	-	-	-	-	-	36	35	34	32	31	30	29
58	-	-	-	-	-	-	-	-	-	31	30	28	27	26	25
62	-	-	-	-	-	-	-	-	-	-	26	25	24	22	21
66	-	-	-	-	-	-	-	-	-	-	-	22	21	19	18
70	-	-	-	-	-	-	-	-	-	-	-	19	18	17	15
74	-	-	-	-	-	-	-	-	-	-	-	-	16	14	13
78	-	-	-	-	-	-	-	-	-	-	-	-	-	12	11
82	-	-	-	-	-	-	-	-	-	-	-	-	-	-	9

** Only with heavy-duty hammer head and 2 x 400t hook-block.

* Double hook-block required.

Main-boom capacities for 9.5-m track available on request.

Additional combinations and lifting capacities on request.



Crane Capacity Notes

Gross capacities do not exceed 75% of tipping load and are in conformance with DIN 15019.2 (test load = $125 \times$ lifting load + $0.1 \times$ dead weight of boom reduced to boom point).

The weight of hook block and all other load-handling accessories is considered part of the load, and suitable allowance for them should be made.

Crane with maximum length of boom can still operate safely up to a

Wind Pressure of 60 N/m^2

and a Wind Speed of 9.8 m/s

Wind Surface of Load 1 m^2 Δ load

All capacities above the parting lines in the charts depend on a firm level, uniformly supporting surface. Shorter boom lengths and lower capacities apply to sloping positions and travel over uneven ground.

Loads suspended from the Fly Jib are not allowed to be travelled into position, and limitations on boom length must be observed when travelling without a load over uneven ground.

Consult operation manual for further particulars and higher wind speeds.

While every care has been taken in the preparation of the ratings given in this leaflet, and all reasonable steps have been taken to check the accuracy of the information, Decalift cannot accept responsibility for any inaccuracy in respect of any matters arising out of, or in connection with the use of these tables.